

Dane techniczne:

Kubatura:	1181 m ³
Powierzchnia zabudowy:	184.7 m ²
Powierzchnia całkowita:	311.18 m ²
Powierzchnia netto:	224.04 m ²
Powierzchnia użytkowa:	277.88 m ²
Wymiary domu:	16.58 x 12.56 m
Minimalne wymiary działki:	23.58 x 21.58 m
Wysokość do kalenicy:	8,70 m / 28,53 ft
Powierzchnia dachu:	282.08 m ²
Kąt nachylenia dachu:	32 degrees

Koszty realizacji:

Realizacja stanu surowego otwartego:	70 700
Realizacja stanu surowego zamkniętego:	111 200
Koszt robót wykończeniowych:	96 200
Realizacja domu pod klucz:	207 300

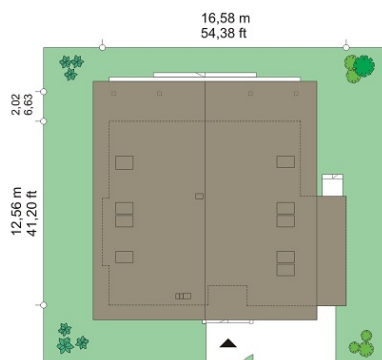
Koszty są podane w cenach netto, należy doliczyć podatek VAT

Materiały:

- Foundations - concrete bench and foundation walls with concrete blocks
- External walls - brick walls -porotherm 25 blocks + polystyrene + thin-layer plaster
- Ceiling - Teriva
- Elevation - thin-layer plaster on polystyrene
- Roof - tile



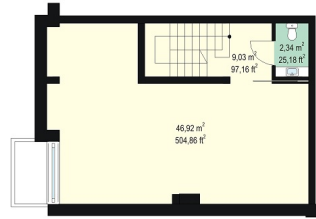
CENA PROJEKTU: 1830.00 \$



	Energy-saving package	bezpł.
	Ventilation and fireplace package	90
	Central vacuum package	70
	The electronic version of the project	120
	Solar installation package	70
	Underfloor heating package	80
	Heat pump package	70
	Water jacket package	70
	Boiler for solid fuel package	80
	Air conditioning package	80
	Fencing projects	140
	Septic tanks sealed package	bezpł.

Open house is a beautiful, original detached house, designed for a family of four- to six people. It is characterized by modern architecture with lots of glass and openings - is dedicated to customers who want to stand out by an interesting, well thought out and functional building. This house was designed as a one-storey building with attic, with a very bright layout design, based on a grid of columns and binding joists. House was covered by fairly mild gable roof. In an interesting and consistent manner introduced here staggered arrangement of the full exterior walls and fragments of fully-glazed, which gives the façades light and the interior a unique character. Lacks the typical window sills and radiators hanging under the windows. In the traditional form of the house with a gable roof, hid modern architecture with character. Building at the same time, by using suitable materials, saves energy - thus is inexpensive to maintain. Interior of the house has been classically divided for living floor and an attic with a bedrooms. On the ground floor by the large glass atrium we get to the central hall, with a representational staircase, combined with living room and kitchen. Very nice kitchen with island and dining area, combined with the dining and living room. In the living room attention paid primarily glass wall opening the house to the covered terrace and garden, and - on the other side - the central fireplace and a TV wall. On the ground floor there is an extra room - e.g. office, garage and boiler room. In the attic there are: parents' apartment - with a bathroom and dressing room, three further bedrooms with en suite bathroom, and laundry facilities. Over the whole there is still a small attic - studio. Open house plan is a proposition courage Investors who like large glassing, nice contrasts in house silhouette and its interior. There is also available a mirror version of this house plan.

Rzuty:



Elewacje:





MG Projekt Pracownia Architektoniczna s.c. ul. Uczniowska 14 03-112 Warszawa
tel.: 22 676 66 83, 22 676 66 88, fax: 22 676 66 82, mob.: 600 392 884,
tylko przedstawiciele 606 200 136, www.mgprojekt.com.pl,
mgprojekt@mgprojekt.com.pl

MG Projekt