

## Dane techniczne:

Kubatura:	369 m <sup>3</sup>
Powierzchnia zabudowy:	73.51 m <sup>2</sup>
Powierzchnia całkowita:	106.28 m <sup>2</sup>
Powierzchnia netto:	83.22 m <sup>2</sup>
Powierzchnia użytkowa:	78.03 m <sup>2</sup>
Wymiary domu:	9.34 x 11.33 m
Minimalne wymiary działki:	17.34 x 18.33 m
Wysokość do kalenicy:	6.93 m / 22,73 ft
Powierzchnia dachu:	171.2 m <sup>2</sup>
Kąt nachylenia dachu:	45 i 25 degrees

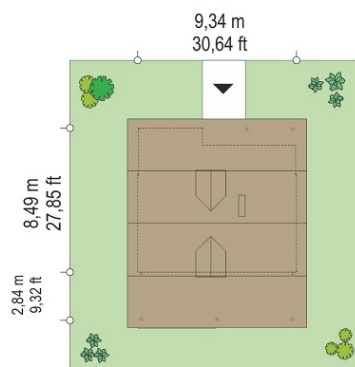
## Koszty realizacji:

Realizacja stanu surowego otwartego:	27 700
Realizacja stanu surowego zamkniętego:	38 500
Koszt robót wykończeniowych:	29 100
Realizacja domu pod klucz:	67 600

Koszty są podane w cenach netto, należy doliczyć podatek VAT

## Materiały:

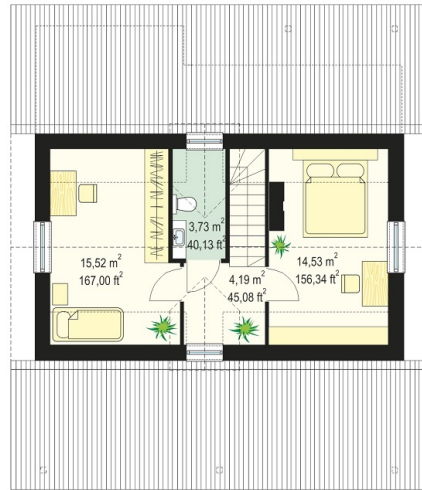
- Foundations - concrete bench and foundation walls with concrete blocks
- External walls - aerated concrete 24 cm + polystyrene + thin-layer plaster
- Ceiling - Teriva
- Elevation - thin-layer plaster on polystyrene
- Roof - tile

**CENA PROJEKTU: 870.00 \$**

	Energy-saving package	bezpł.
	Ventilation and fireplace package	90
	Central vacuum package	70
	The electronic version of the project	120
	Solar installation package	70
	Underfloor heating package	80
	Heat pump package	70
	Water jacket package	70
	Boiler for solid fuel package	80
	Air conditioning package	80
	Fencing projects	140
	Septic tanks sealed package	bezpł.

Pine 5 house plan is the next edition of the popular series of Pines houses. House is designed for a family of 3 to 4 people to use as a year-round family house. The building can be used as holiday house. Given the resulting surface this house plan is simple and inexpensive in realization. Solid of the house consists of a substantial part of the attic, covered by a symmetrical gable roof, and two outhouses. Front - comprised room on the ground floor and entrance porch and rear with a large covered terrace. Covered terrace is a great solution magnifying optically a living room. Roof of the building is decorated with two small dormer windows - one on each slope. Inside, on the ground floor is a spacious living room with exposed staircase and a fireplace, kitchen, bathroom, extra room - for example, for a guest bedroom, hall and a boiler room. On the attic is scheduled two bedrooms and a toilet. In house there is designed a central heating form furnace in the boiler room. We have a mirror version of this house.

## Rzuty:



## Elewacje:

