

Dane techniczne:

Kubatura:	920 m ³
Powierzchnia zabudowy:	150.91 m ²
Powierzchnia całkowita:	263.51 m ²
Powierzchnia netto:	168.09 m ²
Powierzchnia użytkowa:	163.71 m ²
Wymiary domu:	15.34 x 12.47 m
Minimalne wymiary działki:	22.22 x 20.47 m
Wysokość do kalenicy:	8,87 m / 29,09 ft
Powierzchnia dachu:	246.9 m ²
Kąt nachylenia dachu:	30 degrees

Koszty realizacji:

Realizacja stanu surowego otwartego:	51 800
Realizacja stanu surowego zamkniętego:	74 300
Koszt robót wykończeniowych:	72 400
Realizacja domu pod klucz:	146 700

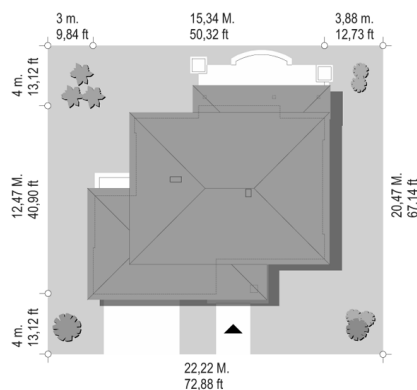
Koszty są podane w cenach netto, należy doliczyć podatek VAT

Materiały:

- Foundations - concrete bench and foundation walls with concrete blocks
- External walls - brick walls -porotherm 25 blocks + polystyrene + thin-layer plaster
- Ceiling - Teriva
- Elevation - thin-layer plaster on polystyrene
- Roof - tile



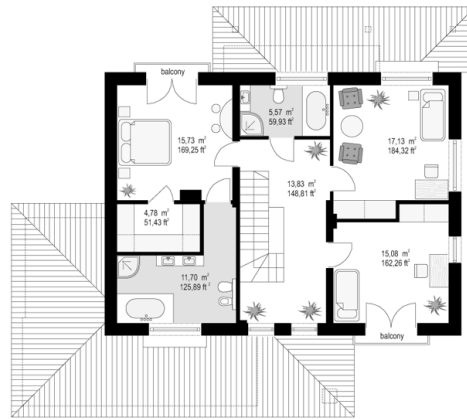
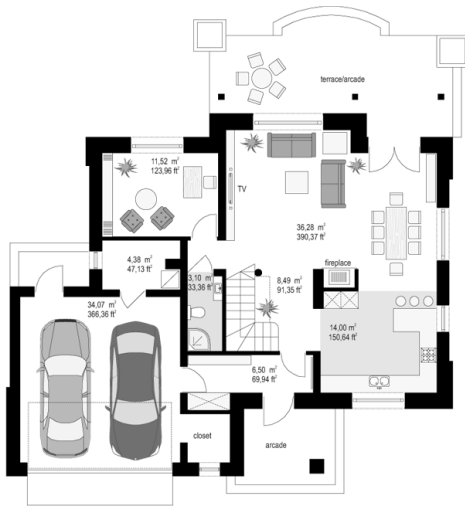
CENA PROJEKTU: 1070.00 \$



	Energy-saving package	bezpł.
	Ventilation and fireplace package	90
	Central vacuum package	70
	The electronic version of the project	120
	Solar installation package	70
	Underfloor heating package	80
	Heat pump package	70
	Water jacket package	70
	Boiler for solid fuel package	80
	Air conditioning package	80
	Fencing projects	140
	Septic tanks sealed package	bezpł.

Toucan house plan is a storey detached house. It is an ideal for a family of four-five people. The building is covered with a hipped roof, with an added part of the garage, and a roofed terrace on the side the garden. Toucan is a suburban villa with a traditional, elegant architecture, with a touch of modernity. Finishing details, and natural materials such as brick or wood add charm to this simple block. House is subordinated to the simplicity and functionality of the building. Clear division of rooms combine with uncomplicated design. On the ground floor is a single space of living area with living room, dining room, lobby with stately staircase, and a partially open kitchen. There is also place for an extra room - study room or a guest bedroom, and a large garage and boiler room. On the first floor are designed three spacious bedrooms with private bathrooms. Parents' bedroom is a separate suite with dressing room and private bathroom. In addition, for the utility purpose, spacious loft above the floor can be adapted. There is also available mirror version of this house plan.

Rzuty:



Elewacje:

