

Dane techniczne:

Kubatura:	1448 m ³
Powierzchnia zabudowy:	250.59 m ²
Powierzchnia całkowita:	432.75 m ²
Powierzchnia netto:	320.14 m ²
Powierzchnia użytkowa:	309.43 m ²
Wymiary domu:	20.56 x 14.88 m
Minimalne wymiary działki:	28.56 x 22.88 m
Wysokość do kalenicy:	6,90 m (7,15 m z podmurówką)
Powierzchnia dachu:	242.97 m ²
Kąt nachylenia dachu:	dach płaski

Koszty realizacji:

Realizacja stanu surowego otwartego:	116 500
Realizacja stanu surowego zamkniętego:	162 000
Koszt robót wykończeniowych:	122 200
Realizacja domu pod klucz:	284 200

Koszty są podane w cenach netto, należy doliczyć podatek VAT

Materiały:

- Foundations - concrete bench and foundation walls with concrete blocks
- External walls - brick walls -porotherm 25 blocks + polystyrene + thin-layer plaster
- Ceiling - Teriva
- Elevation - thin-layer plaster on polystyrene
- Roof - tar roofing

**CENA PROJEKTU: 1940.00 \$**

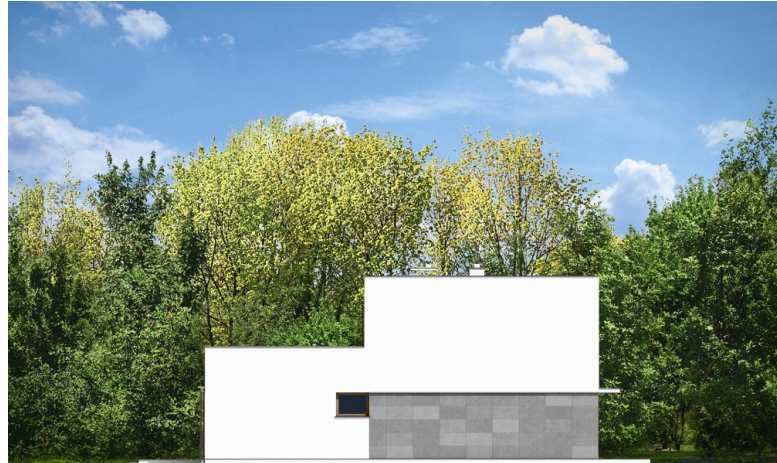
	Energy-saving package	bezpł.
	Ventilation and fireplace package	90
	Central vacuum package	70
	The electronic version of the project	120
	Solar installation package	70
	Underfloor heating package	80
	Heat pump package	70
	Water jacket package	70
	Boiler for solid fuel package	80
	Air conditioning package	80
	Fencing projects	140
	Septic tanks sealed package	bezpł.

Vertigo house plan is designed for large, family of even seven people, designed in the convention of modern urban villa. Building was designed as storey, with a flat roof, consisting of two juxtaposed and intermingled rectangular solids. Exterior architecture of Vertigo has two faces. From the front elevation the building gives the impression of massive closed before the eye of strangers, with a small amount of glazing, with only accented a part of entrance vestibule. From the garden elevation has a different face - open to the garden, with lots of glass surfaces, with a conservatory between the interior of the living room and terrace. From the garden massive storey block was balanced by ground floor part with large glazed. Sliding shutters and windows refer to Mediterranean villa - despite ultra-modern lines of the building. The whole point of the project was subjugation raw geometric modernity and softening its by natural materials. Interior of the house is divided into four parts. On the ground floor: daily - living room, parents' apartment, utility part - with a garage and boiler room, and some of the bedrooms on the first floor. Large undivided daily interior attracts the attention, with a living room, dining room, hall - with representative staircase and a kitchen. All rooms are fully open to the garden - with glass walls from floor up to ceiling. Decorations, as a conservatory in the living room, a large corner fireplace, beautiful kitchen with central island, makes that the house is special and unique. A large number of rooms - e.g. bedrooms, will allow to live here even very large family. There is also available mirror version of this house plan.

Rzuty:



Elewacje:



MG Projekt Pracownia Architektoniczna s.c. ul. Uczniowska 14 03-112 Warszawa
 tel.: 22 676 66 83, 22 676 66 88, fax: 22 676 66 82, mob.: 600 392 884,
 tylko przedstawiciele 606 200 136, www.mgprojekt.com.pl,
mgprojekt@mgprojekt.com.pl

MG Projekt