

## Dane techniczne:

|                            |                       |
|----------------------------|-----------------------|
| Kubatura:                  | 527 m <sup>3</sup>    |
| Powierzchnia zabudowy:     | 121.73 m <sup>2</sup> |
| Powierzchnia całkowita:    | 172.68 m <sup>2</sup> |
| Powierzchnia netto:        | 139.44 m <sup>2</sup> |
| Powierzchnia użytkowa:     | 127.28 m <sup>2</sup> |
| Wymiary domu:              | 14.11 x 9.73 m        |
| Minimalne wymiary działki: | 22.11 x 17.73 m       |
| Wysokość do kalenicy:      | 7,20 m / 23,62 ft     |
| Powierzchnia dachu:        | 221 m <sup>2</sup>    |
| Kąt nachylenia dachu:      | 38 degrees            |

## Koszty realizacji:

|  |         |
|--|---------|
| Realizacja stanu surowego otwartego:   | 33 300  |
| Realizacja stanu surowego zamkniętego: | 52 500  |
| Koszt robót wykończeniowych:           | 64 200  |
| Realizacja domu pod klucz:             | 116 700 |

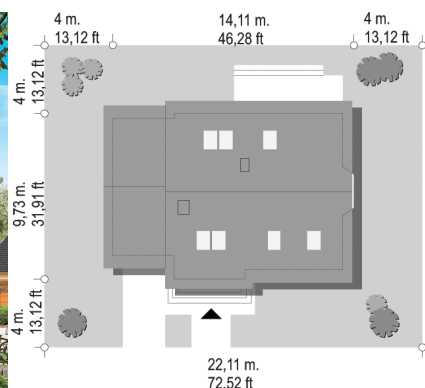
Koszty są podane w cenach netto, należy doliczyć podatek VAT

## Materiały:

- Foundations - Concrete benches and walls of concrete blocks
- Walls - bilayer walls made of cellular concrete
- Ceiling - Teriva
- Elevation - thin-layer plaster on polystyrene
- Roof - tile



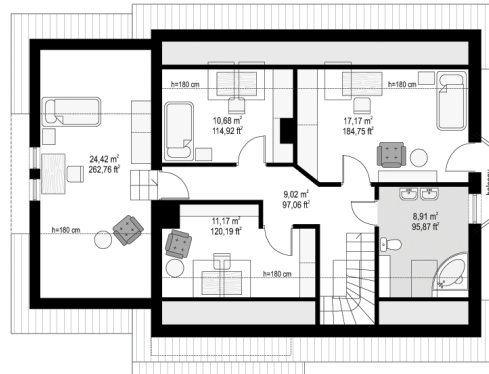
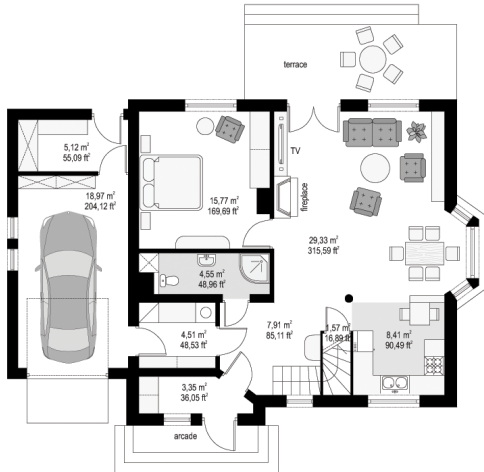
## CENA PROJEKTU: 940.00 \$



|  |                                       |        |
|--|---------------------------------------|--------|
|  | Energy-saving package                 | bezpł. |
|  | Ventilation and fireplace package     | 90     |
|  | Central vacuum package                | 70     |
|  | The electronic version of the project | 120    |
|  | Solar installation package            | 70     |
|  | Underfloor heating package            | 80     |
|  | Heat pump package                     | 70     |
|  | Water jacket package                  | 70     |
|  | Boiler for solid fuel package         | 80     |
|  | Air conditioning package              | 80     |
|  | Fencing projects                      | 140    |
|  | Septic tanks sealed package           | bezpł. |

Breeze house plan is a nice, small house for a family of 4-5 people. The house is suitable even for a small plot. The project is distinguished by simple body, easy to build and a gabled roof. The house can be combined in a semi-detached house, contacting by garages. On the surface of less than 140 m<sup>2</sup> four rooms on the attic and a living room and an extra room on the ground floor has been designed. Breeze house has two utility rooms, available from the garage. There is also a mirror version of Breeze house plan.

## Rzuty:



## Elewacje:

