

Dane techniczne:

Kubatura:	591 m ³
Powierzchnia zabudowy:	118.52 m ²
Powierzchnia całkowita:	198.01 m ²
Powierzchnia netto:	157.28 m ²
Powierzchnia użytkowa:	135.56 m ²
Wymiary domu:	12.43 x 10.8 m
Minimalne wymiary działki:	20 x 18.95 m
Wysokość do kalenicy:	9,14 m / 29,98 ft
Powierzchnia dachu:	201.16 m ²
Kąt nachylenia dachu:	42 degrees

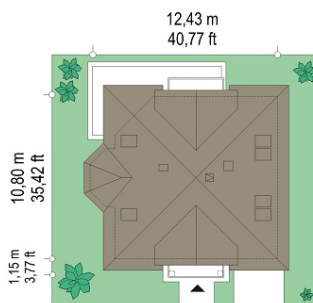
Koszty realizacji:

Realizacja stanu surowego otwartego:	40 900
Realizacja stanu surowego zamkniętego:	61 100
Koszt robót wykończeniowych:	56 700
Realizacja domu pod klucz:	117 800

Koszty są podane w cenach netto, należy doliczyć podatek VAT

Materiały:

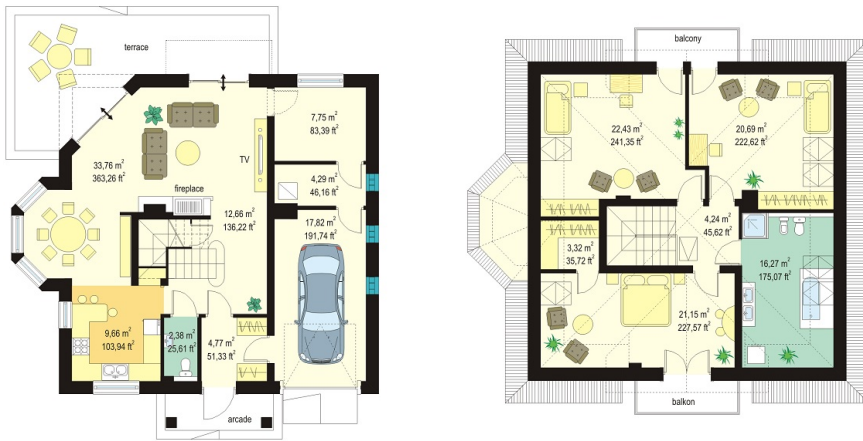
- Foundations - Concrete benches and foundation walls of concrete blocks
- External walls - brick walls -porotherm 25 blocks + polystyrene + thin-layer plaster
- Ceiling - Teriva
- Elevation - thin-layer plaster on polystyrene
- Roof - tile

**CENA PROJEKTU: 1000.00 \$**

	Energy-saving package	bezpł.
	Ventilation and fireplace package	90
	Central vacuum package	70
	The electronic version of the project	120
	Solar installation package	70
	Underfloor heating package	80
	Heat pump package	70
	Water jacket package	70
	Boiler for solid fuel package	80
	Air conditioning package	80
	Fencing projects	140
	Septic tanks sealed package	bezpł.

Agatha house plan is a project for a family of four or five people. This is a storey house with utility attic covered by envelope, hipped roof. House is designed in a quiet style with using traditional and modern details. Compact form of building with built-in garage, was decorated with dormers with balconies, bay window in the dining room, and corner arcades in the living room. Simple, clear body emphasizes the elegance of the external architecture of the building. In this house plan floor space was designed in such way that all the rooms surround a centrally located hall and stairs. The living area constitute hall, sitting room, dining room and a kitchen - this rooms create one open interior, however, they are partially separated from each other. In the utility part on the ground floor is designed garage, boiler room and an extra room (it can also be adapted for extra room - e.g. cabinet). On the top floor there are three large bedrooms with dressing room and built-in wardrobes, and a spacious bathroom - bathing room. On a small area we are managed to design a functional interior with spacious rooms. Agatha house plan is also available in a mirror version.

Rzuty:



Elewacje:

