

## Dane techniczne:

Kubatura:	233 m <sup>3</sup>
Powierzchnia zabudowy:	67.2 m <sup>2</sup>
Powierzchnia całkowita:	82.5 m <sup>2</sup>
Powierzchnia netto:	67.2 m <sup>2</sup>
Powierzchnia użytkowa:	64.2 m <sup>2</sup>
Wymiary domu:	8 x 7.35 m
Minimalne wymiary działki:	16.5 x 15.35 m
Wysokość do kalenicy:	7,27 m / 23,85 ft
Powierzchnia dachu:	118.96 m <sup>2</sup>
Kąt nachylenia dachu:	50 degrees

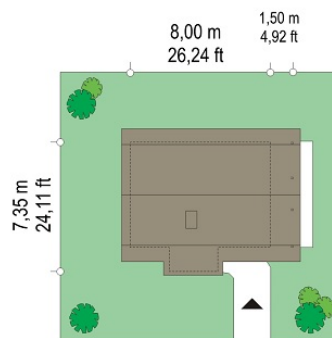
## Koszty realizacji:

Realizacja stanu surowego otwartego:	15 900
Realizacja stanu surowego zamkniętego:	26 000
Koszt robót wykończeniowych:	21 500
Realizacja domu pod klucz:	47 400

Koszty są podane w cenach netto, należy doliczyć podatek VAT

## Materiały:

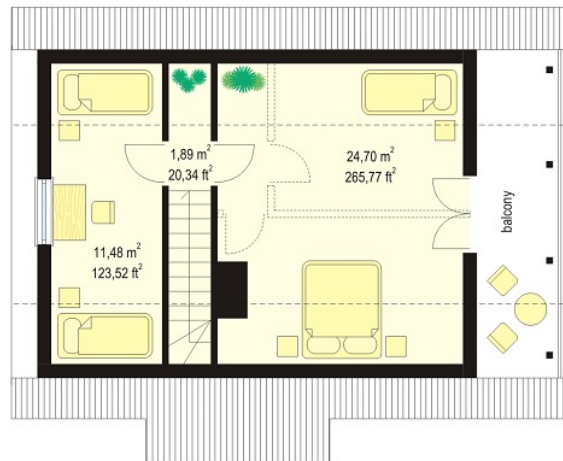
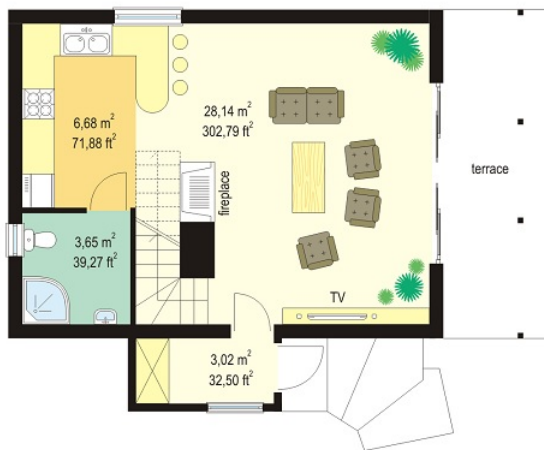
- Foundations - Concrete
- External walls - brick - aerated concrete + polystyrene or timber frame
- Internal walls - brick - brick or aerated concrete
- Ceiling - wooden or concrete
- Elevation - thin-layer plaster on polystyrene
- Roof - ceramic tile or metal roofing tile

**CENA PROJEKTU: 830.00 \$**

	Energy-saving package	bezpł.
	Ventilation and fireplace package	90
	Central vacuum package	70
	The electronic version of the project	120
	Air conditioning package	80
	Fencing projects	140
	Septic tanks sealed package	bezpł.

Cottage house plan is a dream house on the recreational plot or for year-round residence for a small family. This house despite the small area accommodates all the necessary rooms: on the ground floor a comfortable living room with fireplace, kitchen and bathroom on the top floor 2 or 3 bedrooms. In Cottage house plan an additional entrance from the built porch is planned, which allows you to put the front door on the front or back of the house. At large arcade hanging over the terrace you can shelter from the rain or the sun, and from the comfortable balcony you can enjoy the beautiful views of surroundings.

## Rzuty:



## Elewacje:

