

Dane techniczne:

Kubatura:	264 m ³
Powierzchnia zabudowy:	59.08 m ²
Powierzchnia całkowita:	88.85 m ²
Powierzchnia netto:	69.25 m ²
Powierzchnia użytkowa:	64.78 m ²
Wymiary domu:	8.04 x 8 m
Minimalne wymiary działki:	15.04 x 16.5 m
Wysokość do kalenicy:	7,27 m / 23,85 ft
Powierzchnia dachu:	127.89 m ²
Kąt nachylenia dachu:	50 degrees

Koszty realizacji:

Realizacja stanu surowego otwartego:	23 600
Realizacja stanu surowego zamkniętego:	32 700
Koszt robót wykończeniowych:	31 900
Realizacja domu pod klucz:	64 500

Koszty są podane w cenach netto, należy doliczyć podatek VAT

Materiały:

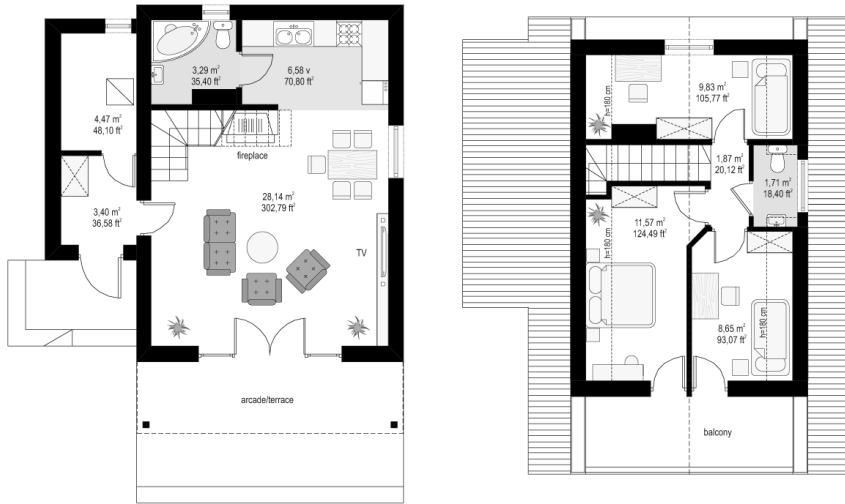
- Foundations - Concrete benches and foundation walls of concrete blocks
- Walls - brick walls - aerated concrete blocks 24 + polystyrene + thin-layer plaster
- Ceiling - Teriva
- Elevation - thin-layer plaster on polystyrene
- Roof - tile

**CENA PROJEKTU: 830.00 \$**

	Energy-saving package	bezpł.
	Ventilation and fireplace package	90
	Central vacuum package	70
	The electronic version of the project	120
	Solar installation package	70
	Underfloor heating package	80
	Heat pump package	70
	Water jacket package	70
	Boiler for solid fuel package	80
	Air conditioning package	80
	Fencing projects	140
	Septic tanks sealed package	bezpł.

Cottage 2 is an enlarged version of a popular cottage house plan. This is a single-family house for a family of 3-4 people. Cottage 2 can also be used as a summer house. The body of the house is covered by a steep gable roof. A large balcony and a covered terrace from the garden side, and a wide glass exit from the living room, give a fantastic effect of opening to the garden. A large amount of wood in the facade and stone elevation is a delicate reference to mountain architecture. At the same time, the house has such a delicate line that will suit perfectly to any surroundings. Inside, on the ground floor, there is a large living room with exposed stairs and a fireplace, a semi-open kitchen, a bathroom, a boiler room with a central heating system, and a porch. On the attic, there are three small bedrooms and a useful toilet. There is also a mirror version of this house plan.

Rzuty:



Elewacje:

