

Dane techniczne:

Kubatura:	704 m ³
Powierzchnia zabudowy:	177.62 m ²
Powierzchnia całkowita:	234.81 m ²
Powierzchnia netto:	195.59 m ²
Powierzchnia użytkowa:	185.27 m ²
Wymiary domu:	11.78 x 17.54 m
Minimalne wymiary działki:	20.35 x 26.39 m
Wysokość do kalenicy:	6,78 m / 22,24 ft
Powierzchnia dachu:	343.46 m ²
Kąt nachylenia dachu:	22 i 38 degrees

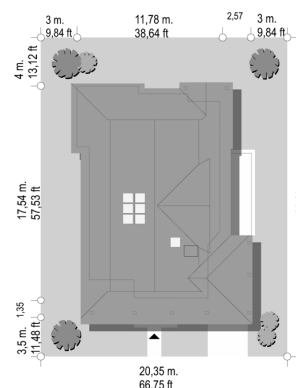
Koszty realizacji:

Realizacja stanu surowego otwartego:	38 700
Realizacja stanu surowego zamkniętego:	62 200
Koszt robót wykończeniowych:	95 500
Realizacja domu pod klucz:	157 600

Koszty są podane w cenach netto, należy doliczyć podatek VAT

Materiały:

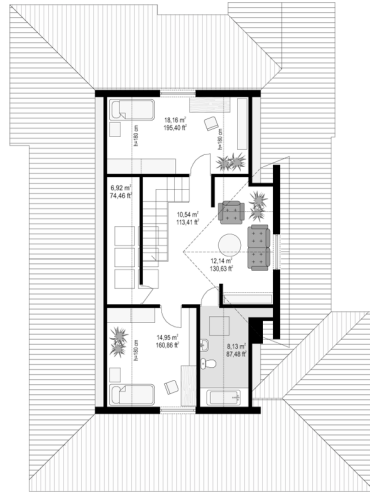
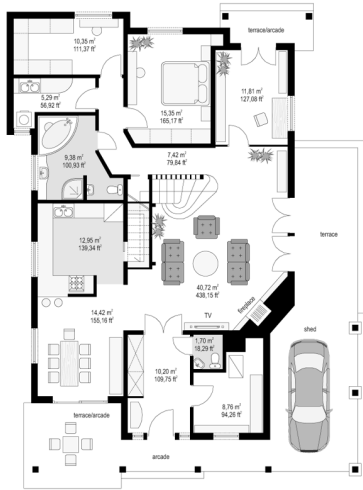
- Foundations - poured concrete
- External walls - wooden skeleton 14x4 + mineral wool insulation + thin= layer plaster
- Ceiling - wooden beams
- Elevation - thin-layer plaster
- Roof - tile

**CENA PROJEKTU: 1040.00 \$**

	Energy-saving package	bezpł.
	Ventilation and fireplace package	90
	Central vacuum package	70
	The electronic version of the project	120
	Solar installation package	70
	Underfloor heating package	80
	Heat pump package	70
	Water jacket package	70
	Boiler for solid fuel package	80
	Air conditioning package	80
	Fencing projects	140
	Septic tanks sealed package	bezpł.

Heron house plan is an extraordinary. It is so charming and original that it is difficult not to draw attention at it. The building was designed in a wooden skeleton technology. The house is designed for a family of 4 - 5 people. This house plan has expanded a ground floor and a smaller usable attic. It is surrounded by the side roofs, verandas, porches and sheds. Arcades are supported by rows of wooden columns. From roof sticking out on three elevations top of the roof with a central placed windows. The roofs of different shapes and angles give a very interesting effect. The house does not belong to a small houses, but thanks to a well-chosen proportions whole body is human scale. Silhouette of the house seems to grow in the ground, to blend into the surroundings. There is no large blank walls, and all the doors and windows open the interior to the surrounding garden. The interior of the house is also unusual. On the ground floor there is a one open living space which the central point is a living room with representation staircase. From the living room we may go to the kitchen connected with a dining area - with its own arcade terrace as From here we can also go to the parent's bedroom behind the stairs - bedroom, bathroom and dressing room. From the living room is also a connection with cozy study which has its own exit to the garden. Finally, the living room is connected to the lobby, acting as a dressing room and entrance area of house. From the porch we can easily get to the boiler room. On the ground floor there is a lot of exits directly to the garden with a variety of rooms, there are three arcades and one uncovered terrace. At the entrance the carport was designed. In this house plan in the attic there are planned two children's bedrooms and a bathroom. From the large hall on the top floor, you can also separate additional third room. There is also a mirror version of this house plan.

Rzuty:



Elewacje:

