

Dane techniczne:

Kubatura:	904 m ³
Powierzchnia zabudowy:	169.22 m ²
Powierzchnia całkowita:	295.24 m ²
Powierzchnia netto:	178.94 m ²
Powierzchnia użytkowa:	178.94 m ²
Wymiary domu:	16.65 x 13.11 m
Minimalne wymiary działki:	23.65 x 22.11 m
Wysokość do kalenicy:	8,70 m / 28,54 ft
Powierzchnia dachu:	330.5 m ²
Kąt nachylenia dachu:	40 degrees

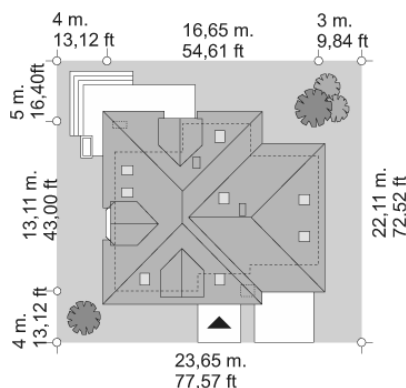
Koszty realizacji:

Realizacja stanu surowego otwartego:	52 900
Realizacja stanu surowego zamkniętego:	76 900
Koszt robót wykończeniowych:	74 300
Realizacja domu pod klucz:	151 200

Koszty są podane w cenach netto, należy doliczyć podatek VAT

Materiały:

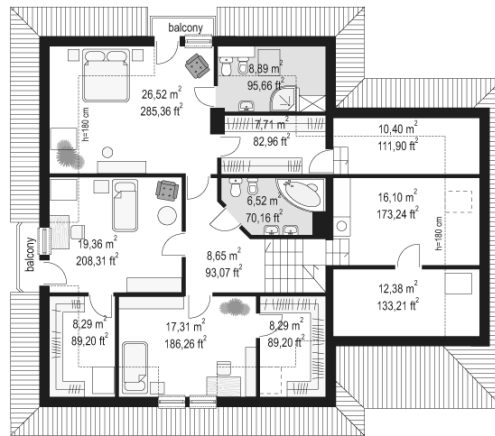
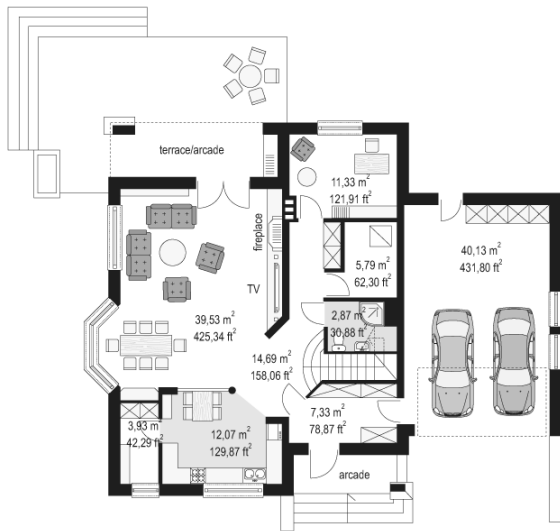
- Foundations - reinforced concrete
- External walls - bilayer porotherm 25 + 12 polystyrene (or wool)
- Ceiling - reinforced concrete Teriva
- Elevation - thin-layer plaster
- Roof - metal roofing tile or ceramic tile

**CENA PROJEKTU: 1040.00 \$**

	Energy-saving package	bezpł.
	Ventilation and fireplace package	90
	Central vacuum package	70
	The electronic version of the project	120
	Solar installation package	70
	Underfloor heating package	80
	Heat pump package	70
	Water jacket package	70
	Boiler for solid fuel package	80
	Air conditioning package	80
	Fencing projects	140
	Septic tanks sealed package	bezpł.

Agnes house plan has been created for a young family with children - this house plan is attractive on the outside and functional in the inside. The arcade supported by column with buttress give the entry presentable appearance. The bay window of the dining room and arcade with outdoor fireplace decorate the house from the garden. A hipped roof with dormers and balconies, diversify the body of the building. The interior of the house has a large living room, large garage and functional bedrooms in the attic. Agnes house plan is also available in a mirror version

Rzuty:



Elewacje:

