

Dane techniczne:

Kubatura:	402 m ³
Powierzchnia zabudowy:	120.44 m ²
Powierzchnia całkowita:	120.44 m ²
Powierzchnia netto:	98.54 m ²
Powierzchnia użytkowa:	95.37 m ²
Wymiary domu:	12.24 x 9.84 m
Minimalne wymiary działki:	20.24 x 19.16 m
Wysokość do kalenicy:	5,53 m / 18,14 ft
Powierzchnia dachu:	180.61 m ²
Kąt nachylenia dachu:	24 i 28 degrees

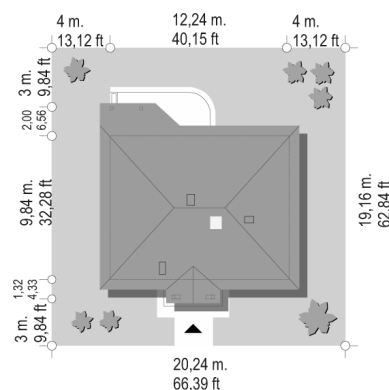
Koszty realizacji:

Realizacja stanu surowego otwartego:	24 600
Realizacja stanu surowego zamkniętego:	34 900
Koszt robót wykończeniowych:	42 100
Realizacja domu pod klucz:	77 000

Koszty są podane w cenach netto, należy doliczyć podatek VAT

Materiały:

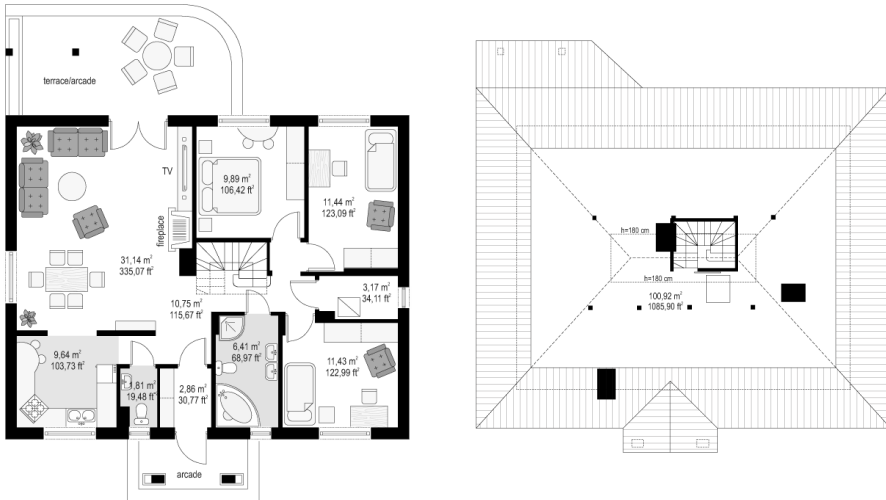
- Foundations - Concrete benches and foundation walls of concrete blocks
- External walls - brick walls - aerated concrete blocks 24 cm + polystyrene + thin-layer plaster
- Ceiling - a wooden beams
- Elevation - thin-layer plaster on polystyrene
- Roof - tile

**CENA PROJEKTU: 940.00 \$**

	Energy-saving package	bezpł.
	Ventilation and fireplace package	90
	Central vacuum package	70
	The electronic version of the project	120
	Solar installation package	70
	Underfloor heating package	80
	Heat pump package	70
	Water jacket package	70
	Air conditioning package	80
	Fencing projects	140
	Septic tanks sealed package	bezpł.

Four corners 4 house plan was made for a family of 3 - 4 people. This house plan is a one-storeyed house covered by a hipped roof, with a covered entrance portico and terraced arcade from the garden side. The compact rectangular body of building is easy to build and inexpensive to use. Above the ceiling over the ground floor the attic is hidden for use as a magazine, what compensates the lack of other utility rooms in the house. Calm, traditional architectural form of the building will fit perfectly in any suburban landscape. The house is cozy and proportionate. The interior of house is divided into a living area with a living room, hall and semi-open kitchen, and night part with three bedrooms, a bathroom and a small boiler room. The entrance to the boiler room can be designed from the outside then the house can be heated by solid fuel boiler. The living room comes out by a wide door to the partially covered terrace and to the garden. There is a mirror version of this house.

Rzuty:



Elewacje:

