

Dane techniczne:

| | |
|----------------------------|-----------------------|
| Kubatura: | 1228 m ³ |
| Powierzchnia zabudowy: | 270.06 m ² |
| Powierzchnia całkowita: | 298.87 m ² |
| Powierzchnia netto: | 182.44 m ² |
| Powierzchnia użytkowa: | 176.91 m ² |
| Wymiary domu: | 19.36 x 21.86 m |
| Minimalne wymiary działki: | 27.36 x 29.21 m |
| Wysokość do kalenicy: | 6,57 m 21,55 ft |
| Powierzchnia dachu: | 383.78 m ² |
| Kąt nachylenia dachu: | 30 degrees |

Koszty realizacji:

| | |
|--|---------|
| Realizacja stanu surowego otwartego: | 70 800 |
| Realizacja stanu surowego zamkniętego: | 103 500 |
| Koszt robót wykończeniowych: | 91 600 |
| Realizacja domu pod klucz: | 195 000 |

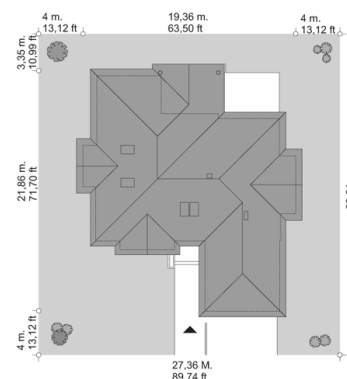
Koszty są podane w cenach netto, należy doliczyć podatek VAT

Materiały:

- Foundations - concrete bench and foundation walls with concrete blocks
- External walls - brick walls -porotherm 25 blocks + polystyrene + thin-layer plaster (partly facing clinker)
- Ceiling - Teriva
- Elevation - thin-layer plaster on polystyrene
- Roof - tile



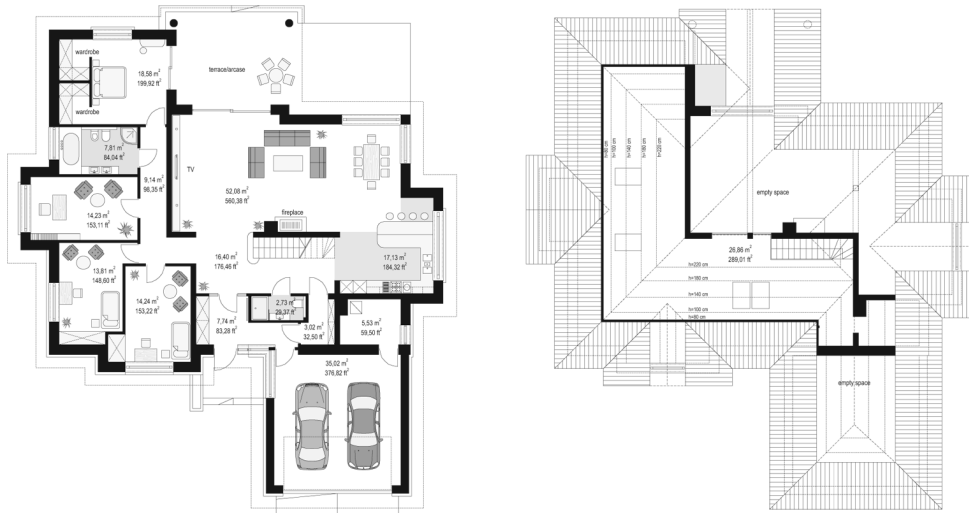
CENA PROJEKTU: 1520.00 \$



| | | |
|--|---------------------------------------|--------|
| | Energy-saving package | bezpł. |
| | Ventilation and fireplace package | 90 |
| | Central vacuum package | 70 |
| | The electronic version of the project | 120 |
| | Solar installation package | 70 |
| | Underfloor heating package | 80 |
| | Heat pump package | 70 |
| | Water jacket package | 70 |
| | Boiler for solid fuel package | 80 |
| | Air conditioning package | 80 |
| | Fencing projects | 140 |
| | Septic tanks sealed package | bezpł. |

Extensive house plan is a fantastic comfortable villa, combines elements of modern and traditional forms. Detached house designed for a family of four-five people. Storey functional layout, where all the rooms are available from one level, dismembered body of covered with a mild roofs, living area with high ceilings reaching the roof, the proximity of the interior with the surrounding garden - all this means that the house will be a great place to live. Each elevation is interesting and original. Front of the house with a bay window ended by roofs and mini entrance yard, with its elegant doors with light. Garden elevation with a lovely covered terrace and glazing living room. Even the facades side - with additional bays are interesting. In this facades used traditional elements with modern touches. House Extensive has a solid appearance, and at the same time is very fresh and modern. Building will fit perfectly in almost every area - the best would look on a larger plot of land, surrounded by thinner building. Extensive house includes - on the ground floor: living area - living room, dining room, kitchen and hall, part of the night - with four rooms and part of the utility - with a garage and boiler room. In addition, you can freely use the space of attic - as a closed warehouse, or as open to the living room mezzanine (for example, a sports room or hobby). Phenomenal daily space, with emptiness of the living room and kitchen can be found on our visualization. Building through an extensive plan and large roof will not be the cheapest realization, but it certainly is worth the madness. Especially if you've lived previously in the house and spent half of your life running up the stairs and making full use of the upper floor. The used energy-saving materials, insulation and installation make house will not be expensive to maintain. There is also available mirror version of this house plan.

Rzuty:



Elewacje:

