

## Dane techniczne:

Kubatura:	877 m <sup>3</sup>
Powierzchnia zabudowy:	170.98 m <sup>2</sup>
Powierzchnia całkowita:	269.97 m <sup>2</sup>
Powierzchnia netto:	171.26 m <sup>2</sup>
Powierzchnia użytkowa:	161.51 m <sup>2</sup>
Wymiary domu:	17.71 x 11.91 m
Minimalne wymiary działki:	25.38 x 20.06 m
Wysokość do kalenicy:	8,78 m / 28,80 ft
Powierzchnia dachu:	281.04 m <sup>2</sup>
Kąt nachylenia dachu:	40 degrees

## Koszty realizacji:

Realizacja stanu surowego otwartego:	60 000
Realizacja stanu surowego zamkniętego:	86 500
Koszt robót wykończeniowych:	69 500
Realizacja domu pod klucz:	155 900

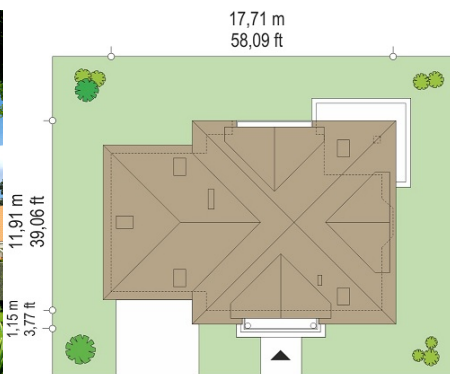
Koszty są podane w cenach netto, należy doliczyć podatek VAT

## Materiały:

- Foundations - concrete bench and foundation walls with concrete blocks
- External walls - brick walls -porotherm 25 blocks + polystyrene + thin-layer plaster
- Ceiling - Teriva
- Roof - ceramic tile
- Elevation - thin-layer plaster on polystyrene



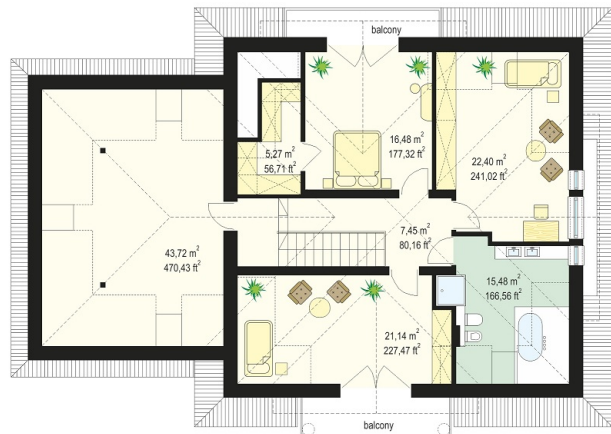
## CENA PROJEKTU: 1110.00 \$



	Energy-saving package	bezpł.
	Ventilation and fireplace package	90
	Central vacuum package	70
	The electronic version of the project	120
	Solar installation package	70
	Underfloor heating package	80
	Heat pump package	70
	Water jacket package	70
	Boiler for solid fuel package	80
	Air conditioning package	80
	Fencing projects	140
	Septic tanks sealed package	bezpł.

Romeo house plan is a comfortable family house, for a family of four-to six people, with an attic. The building has a compact body, designed on a square plan, with an added part of the garage and utility rooms. It is a variant version of Julka house plan - its bigger brother. Architecturally, house refers to the tradition of pre-war Polish manor house and villas, but in the modern spirit - using modern materials and technology. The house is very well insulated - easily can become energy-efficient building. Front elevation is decorated by entrance platform, over which the two columns support little balcony. Wide doors with side glazing invite us to the interior. Garden elevation is decorated with living room bay window with a beautiful large window, and an arcade through which by the wide patio doors we can go out from the living room to the terrace and garden. The interior of house plan is divided into a living area on the ground floor, part of the night - with a bedroom in the attic, and utility part in the annex garage building d. Beautiful, very large living room, connected to the lobby and half open kitchen create a comfortable, representative living space. In the middle of this space are beautiful stairs to the attic, which adorning the hall. Next to the kitchen is a necessary pantry. On the other side of the atrium you can find an extra room (office or guest bedroom). From the lobby we go to double garage and a large boiler. In the attic there are three comfortable bedrooms and a spacious bathroom. Master bedroom - with its own dressing room. Above the garage is a free space of attic, which can be easily adapted for utility purposes. House plan Romeo is well thought out, functional and comfortable building. There is also available mirror version of this house plan.

## Rzuty:



## Elewacje:

