

Dane techniczne:

Kubatura:	906 m ³
Powierzchnia zabudowy:	177.51 m ²
Powierzchnia całkowita:	280.23 m ²
Powierzchnia netto:	179.25 m ²
Powierzchnia użytkowa:	170.05 m ²
Wymiary domu:	18.99 x 11.36 m
Minimalne wymiary działki:	26.87 x 19.51 m
Wysokość do kalenicy:	8,55 m / 28,04 ft
Powierzchnia dachu:	290 m ²
Kąt nachylenia dachu:	40 degrees

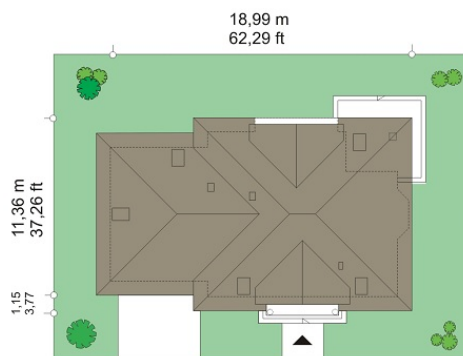
Koszty realizacji:

Realizacja stanu surowego otwartego:	66 300
Realizacja stanu surowego zamkniętego:	94 400
Koszt robót wykończeniowych:	80 100
Realizacja domu pod klucz:	174 400

Koszty są podane w cenach netto, należy doliczyć podatek VAT

Materiały:

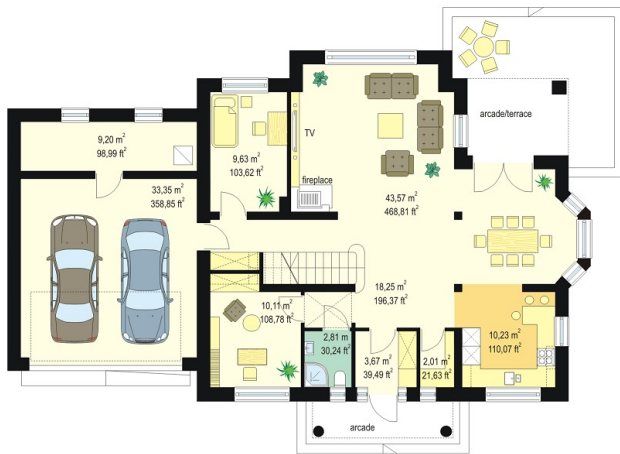
- Foundations - concrete bench and foundation walls with concrete blocks
- External walls - brick walls -porotherm 25 blocks + polystyrene + thin-layer plaster
- Ceiling - Teriva
- Roof - ceramic tile
- Elevation - thin-layer plaster on polystyrene

**CENA PROJEKTU: 1180.00 \$**

	Energy-saving package	bezpł.
	Ventilation and fireplace package	90
	Central vacuum package	70
	The electronic version of the project	120
	Solar installation package	70
	Underfloor heating package	80
	Heat pump package	70
	Water jacket package	70
	Boiler for solid fuel package	80
	Air conditioning package	80
	Fencing projects	140
	Septic tanks sealed package	bezpł.

Ophelia house plan is a very similar to Julka house plan. Ophelia house plan - thanks to its symmetrical facade of the front porch and a large dormers with a balcony above the entrance door, also recalls also another house with our collection - Benedict 2. At a time when everyone chase for modernity nice to have a reference point - something changeless, not coming out of fashion. House of traditional architecture, which certainly gets old when the next pass fashion houses - the box. House of traditional architecture, which certainly not gets old when the fashion for houses boxes will pass. Ophelia is the an example of manor style, and to this it is a house with a modern functional interior, designed in a modern, energy-efficient technology. Unpretentious architecture, with preserved harmony, proportions and symmetry of each façade, perfectly fit in with any environment. The block of house is representative, but retains a human scale. On the ground floor there is an open living area - living room, dining area, kitchen, hall, two additional rooms and utility part - garage and boiler room. In the attic there are three good-sized bedrooms with wardrobes, and a large bathroom. Above the garage is a loft that can be used as an attic. Comfort and space are the basic asset of this house, it is a real small residence. We have here pantry, a dining room that can accommodate a large table, living room, wide and comfortable staircase, a large hall or porch. Materials and technologies used in Ophelia house plan are energy efficient design layout is clear and not cause trouble for the contractor during construction. Ophelia house plan certainly will appeal to people looking for a comfortable, well-thought-house, who on the one hand dreaming of a representative villa, on the other hand, do not want to overdo it with the size of the house. There is also available a mirror version of this house plan.

Rzuty:



Elewacje:

