

Dane techniczne:

Kubatura:	641 m ³
Powierzchnia zabudowy:	126.84 m ²
Powierzchnia całkowita:	189.47 m ²
Powierzchnia netto:	127.68 m ²
Powierzchnia użytkowa:	115.71 m ²
Wymiary domu:	14.49 x 9.72 m
Minimalne wymiary działki:	21.49 x 17.72 m
Wysokość do kalenicy:	7,45 m / 24,436 ft
Powierzchnia dachu:	202.55 m ²
Kąt nachylenia dachu:	38 degrees

Koszty realizacji:

Realizacja stanu surowego otwartego:	40 900
Realizacja stanu surowego zamkniętego:	60 500
Koszt robót wykończeniowych:	66 900
Realizacja domu pod klucz:	127 300

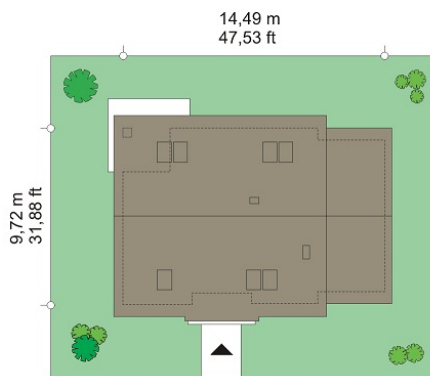
Koszty są podane w cenach netto, należy doliczyć podatek VAT

Materiały:

- Foundations - concrete bench and foundation walls with concrete blocks
- External walls - brick walls -porotherm 25 blocks + polystyrene + thin-layer plaster
- Ceiling - Teriva
- Roof - ceramic tile
- Elevation - thin-layer plaster on polystyrene



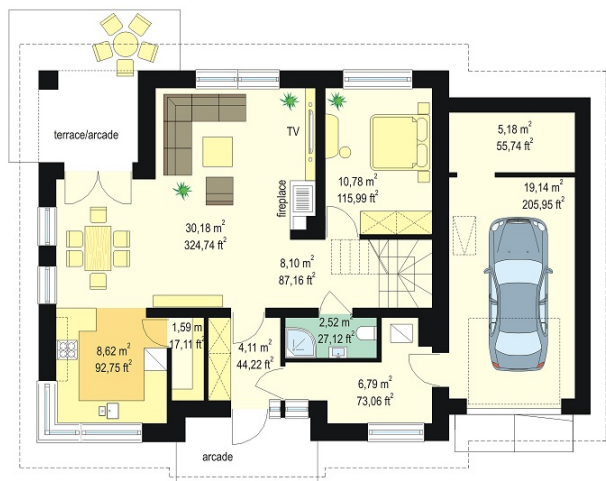
CENA PROJEKTU: 1000.00 \$



	Energy-saving package	bezpł.
	Ventilation and fireplace package	90
	Central vacuum package	70
	The electronic version of the project	120
	Solar installation package	70
	Underfloor heating package	80
	Heat pump package	70
	Water jacket package	70
	Boiler for solid fuel package	80
	Air conditioning package	80
	Fencing projects	140
	Septic tanks sealed package	bezpł.

Optimal 2 house plan is a variant version of Optimal, with later extension of single garage to side elevation. The building is a bungalow with a usable attic, designed on a rectangular plan, covered by a gable roof. Simple minimalist block creates a peaceful, aesthetic architecture with modern details and materials. Facades were curiously varied: front by an arcade entrance accented with a gable roof and a corner kitchen window; and exterior by nice glazing of living room and a corner arcade enclosing part of the terrace. House, with its unpretentiousness successfully fit into any environment. Interior of the house is designed with a division into a living area on the ground floor and bedrooms in the attic. On the ground floor living room, hall and kitchen form a common open space in which there is a place for a dining room, the angle for leisure furniture, wall TV and a fireplace. Comfortable stairs, slightly separated from the living room are also interior decoration. On the ground floor we predicted space for a pantry near the kitchen, extra room (office or guest bedroom), bathroom and boiler room, which functionally connects the vestibule with a garage. Gas boiler, can be easily adapted to the furnace for solid fuel. The garage has an additional utility room. In the attic there are three comfortable bedrooms with built-in wardrobes, dressing room and a spacious bathroom with roof windows above the bath. Optimal 2 is energy efficient house it uses a very good thermal insulation and modern installations and technologies. The actual construction of the house, thanks to a simple construction, it will be easy and inexpensive. The later exploitation of the building will also be cheap. Optimal 2 is the optimal house, perfect for investors thinking practically, economically, and who like modernity rooted in traditional form. There is also available a mirror version of this house plan.

Rzuty:



Elewacje:

