

## Dane techniczne:

Kubatura:	346 m <sup>3</sup>
Powierzchnia zabudowy:	80.95 m <sup>2</sup>
Powierzchnia całkowita:	80.95 m <sup>2</sup>
Powierzchnia netto:	61.29 m <sup>2</sup>
Powierzchnia użytkowa:	57.79 m <sup>2</sup>
Wymiary domu:	11 x 8 m
Minimalne wymiary działki:	17 x 16 m
Wysokość do kalenicy:	5,70 m / 18,70 ft
Powierzchnia dachu:	130.59 m <sup>2</sup>
Kąt nachylenia dachu:	30 degrees

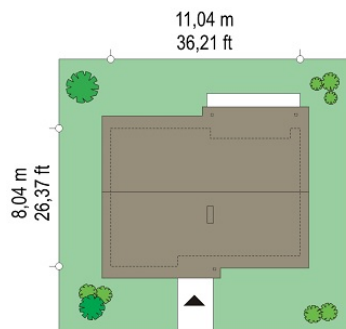
## Koszty realizacji:

Realizacja stanu surowego otwartego:	22 700
Realizacja stanu surowego zamkniętego:	30 600
Koszt robót wykończeniowych:	28 400
Realizacja domu pod klucz:	59 000

Koszty są podane w cenach netto, należy doliczyć podatek VAT

## Materiały:

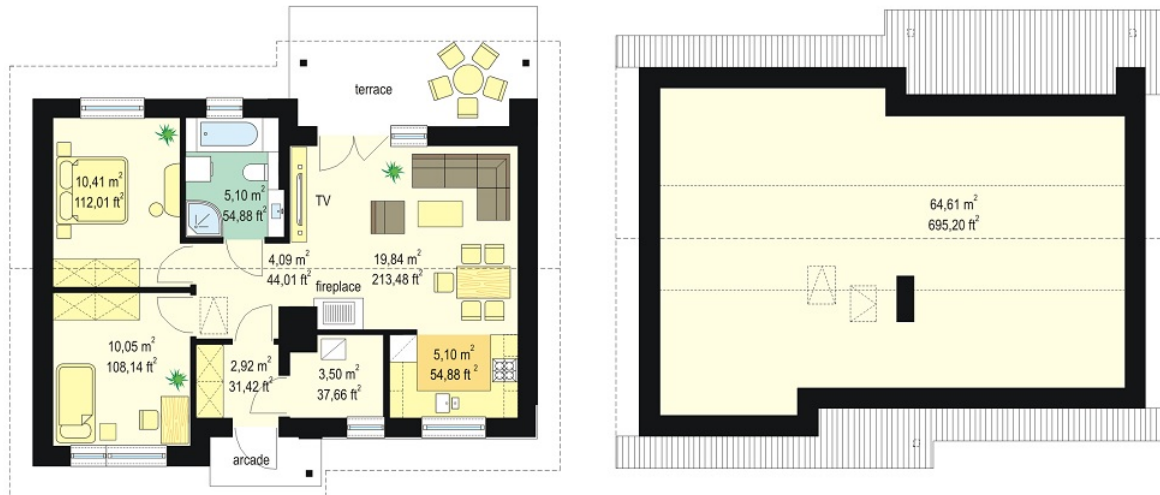
- Foundations - Concrete benches and foundation walls of concrete blocks
- External walls - brick walls - porotherm hollow polystyrene 25 + thin-layer plaster
- Ceiling - wooden beam
- Elevation - thin-layer plaster on polystyrene
- Roof - ceramic tile

**CENA PROJEKTU: 830.00 \$**

	Energy-saving package	bezpł.
	Ventilation and fireplace package	90
	Central vacuum package	70
	The electronic version of the project	120
	Solar installation package	70
	Underfloor heating package	80
	Heat pump package	70
	Water jacket package	70
	Boiler for solid fuel package	80
	Air conditioning package	80
	Fencing projects	140
	Septic tanks sealed package	bezpł.

Ladybug house plan is a proposal of a small one-story detached house for the family of three - four people, covered by a gable roof with an attic to adapt. The house has a simple form and construction. It is easy to build and cheap to future exploitation. The house has a simple form and construction. It is easy to build and cheap to future exploitation. Thanks to the very good thermal insulation and modern installations, Ladybug is more energy efficient building. External appearance is a combination of modernity with traditional form. Modern finishing materials and architectural details connect with the traditional form of one-story house on a rectangular plan, with a gable roof. Front and garden facades have been varied by roofed arcades, and wood wall Elevations. The original roof covered with a sheet, you can be easily replaced by tiles or metal roofing tiles. The interior of house is available in two versions: a variant with access to the attic by ladder stairs, and a variant with stairs to the attic. In both versions, you get up to the attic - attic, which can be freely adapted, as a warehouse, or as a utility room. The ground floor of the house consists of a living area with lounge, kitchen, hall and two bedrooms with a bathroom. Next to the porch is a gas boiler, which can be easily changed to boiler room with solid fuel stove. Despite its small area the house has a spacious and comfortable interior. Ladybug house plan is a year-round house, it can also be used as a holiday home. The simple and easy construction will save you on construction costs. Ladybug house plan is certainly a reasonable proposition for the thinking customer. You can find this house plan in a version without the garage, but it is very easy to design a garage on the side of the house, next to the bedrooms. There is also a mirror version of the Ladybug house plan.

## Rzuty:



## Elewacje:

