

Dane techniczne:

Kubatura:	312 m ³
Powierzchnia zabudowy:	56.64 m ²
Powierzchnia całkowita:	93.98 m ²
Powierzchnia netto:	71.76 m ²
Powierzchnia użytkowa:	67.05 m ²
Wymiary domu:	7.78 x 7.28 m
Minimalne wymiary działki:	16.03 x 15.48 m
Wysokość do kalenicy:	7,69 m / 25,22 ft
Powierzchnia dachu:	123.53 m ²
Kąt nachylenia dachu:	35 i 45 degrees

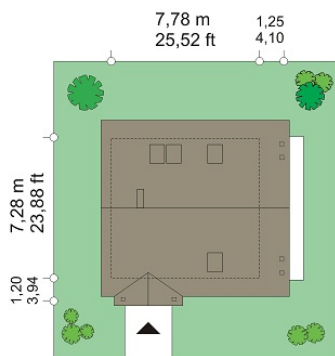
Koszty realizacji:

Realizacja stanu surowego otwartego:	22 400
Realizacja stanu surowego zamkniętego:	36 500
Koszt robót wykończeniowych:	31 800
Realizacja domu pod klucz:	68 300

Koszty są podane w cenach netto, należy doliczyć podatek VAT

Materiały:

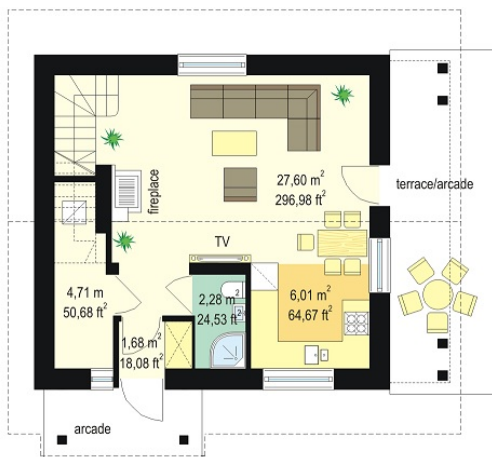
- Foundations - concrete bench and foundation walls with concrete blocks
- External walls - aerated concrete 24 cm + polystyrene + thin-layer plaster
- Ceiling - Teriva
- Elevation - thin-layer plaster on polystyrene
- Roof - ceramic tile

**CENA PROJEKTU: 870.00 \$**

	Energy-saving package	bezpł.
	Ventilation and fireplace package	90
	Central vacuum package	70
	The electronic version of the project	120
	Solar installation package	70
	Underfloor heating package	80
	Heat pump package	70
	Water jacket package	70
	Boiler for solid fuel package	80
	Air conditioning package	80
	Fencing projects	140
	Septic tanks sealed package	bezpł.

Nice house is designed for a family of three to four people. The house was designed as a family all year round, but it can also serve as summer house. The rectangular of the ground floor was covered with a gable roof, which is located in his attic. An interesting body is diversified by terrace roofing and balcony from the garden side, and supported by two small columns roof over the entrance. Architecture of house combines traditional form, with modern detail and materials. Thanks to its unpretentiousness this house fits perfectly in any environment. The interior of the house is divided into a living area on the ground floor and bedrooms in the attic. Living room, kitchen and foyer form a large open common space. Cleverly positioned staircase are decoration of the living room. Centrally located chimney supports the both a fireplace in the living room and the boiler in the neighboring boiler room. The boiler was designed as a gas, but it can be easily adapted for solid fuel furnace. In the attic there are three small bedrooms and a bathroom. Partition walls of the attic can be easily and freely adjusted by changing the configuration of the rooms. Nice house plan takes into account a very good warming partitions. The house is energy efficient - equipped in the modern installations. With simple and inexpensive construction on the one hand and used energy-saving technologies, on the other hand, the house will be cheap in the construction and subsequent exploitation. This house plan is an ideal solution for counting the money investors wishing to live in affordable and charming detached house. Nice house is available in a mirror version.

Rzuty:



Elewacje:

