

Dane techniczne:

Kubatura:	601 m ³
Powierzchnia zabudowy:	128.04 m ²
Powierzchnia całkowita:	128.04 m ²
Powierzchnia netto:	98.38 m ²
Powierzchnia użytkowa:	95.53 m ²
Wymiary domu:	14.19 x 9.76 m
Minimalne wymiary działki:	21.19 x 17.76 m
Wysokość do kalenicy:	6,38 m / 20,93 ft
Powierzchnia dachu:	194.05 m ²
Kąt nachylenia dachu:	30 degrees

Koszty realizacji:

Realizacja stanu surowego otwartego:	33 100
Realizacja stanu surowego zamkniętego:	48 000
Koszt robót wykończeniowych:	41 300
Realizacja domu pod klucz:	89 200

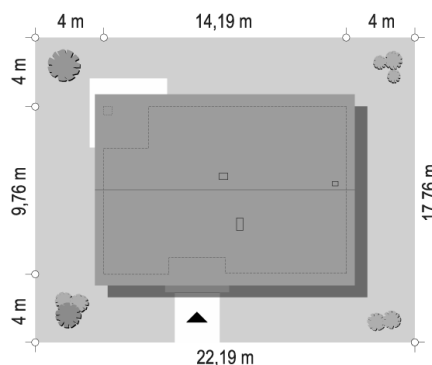
Koszty są podane w cenach netto, należy doliczyć podatek VAT

Materiały:

- Foundations - concrete bench and foundation walls with concrete blocks
- External walls - brick walls -porotherm 25 blocks + polystyrene + thin-layer plaster
- Strop - Ceiling - wooden beams or concrete teriva
- Elevation - thin-layer plaster on polystyrene
- Roof - ceramic tile



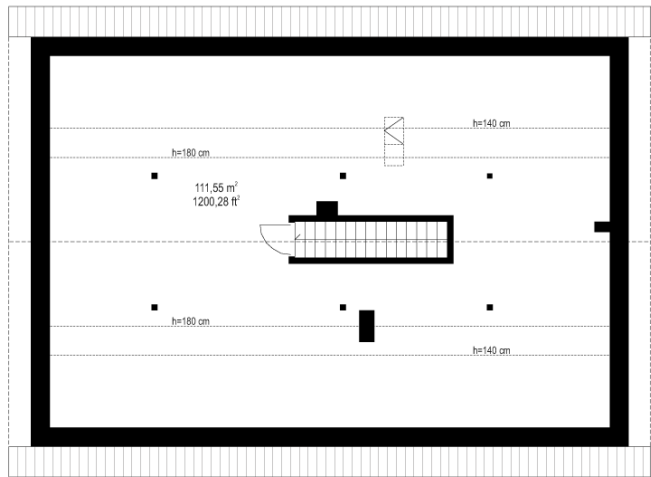
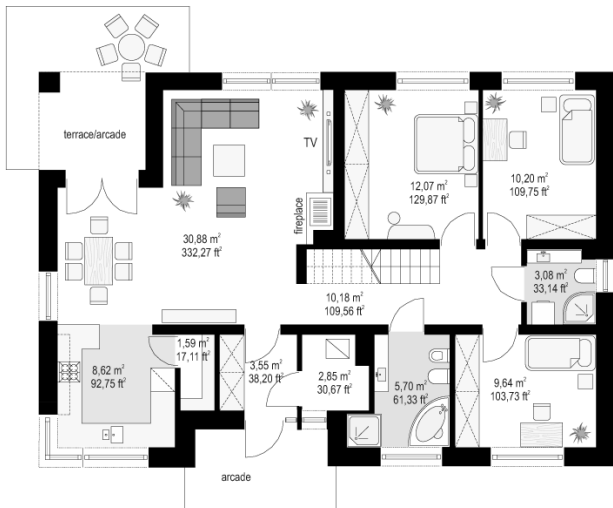
CENA PROJEKTU: 900.00 \$



	Energy-saving package	bezpł.
	Ventilation and fireplace package	90
	Central vacuum package	70
	The electronic version of the project	120
	Solar installation package	70
	Underfloor heating package	80
	Heat pump package	70
	Water jacket package	70
	Boiler for solid fuel package	80
	Air conditioning package	80
	Fencing projects	140
	Septic tanks sealed package	bezpł.

Olive house plan is a one-story single-family house, for a family of four people, with attic to adapt, covered by symmetrical gable roof. Simple modern shape of the building is decorated with original window woodwork, and wooden and clinker wall claddings. The traditional form of one-story house was designed on a rectangular plan, and has been combined with modern detail and materials. Front elevation varies the arcade entrance and a wooden wall cladding. The corner kitchen window adds a front some character. The house from the garden was enrich by corner arcade of terrace and extensive glazing of living room. Contemporary style is very easy to model and modify. Olive house may well have a roof with tiles or walls with rustication. The interior has traditional layout. Readable division of a living area with living room, dining room, kitchen, hall and part of the night - with bedrooms and bathrooms. Gas boiler room located at the entrance can be easily adapted to a solid fuel stove. Living room with dining area is very easy to arrange. Kitchen has its own pantry - a dream of many housewife. Three comfortable bedrooms with space for built-in wardrobes border with two bathrooms. Small bathroom with toilet and shower serves as the daily toilet and an additional bathroom at the same time. The stairs in the hallway lead us to the attic, which owners can freely use as extra storage space or usable space. House was designed as an energy-efficient, using modern materials, systems and technologies. It is cheap in construction and subsequent maintenance. The basic version of Olive does not have a garage, but you can easily build into it a single or double garage. You can also join the detached garage building. There is also available a mirror version of this house plan.

Rzuty:



Elewacje:

