

### Dane techniczne:

Kubatura:	1450 m <sup>3</sup>
Powierzchnia zabudowy:	285.52 m <sup>2</sup>
Powierzchnia całkowita:	458.71 m <sup>2</sup>
Powierzchnia netto:	410.13 m <sup>2</sup>
Powierzchnia użytkowa:	299.74 m <sup>2</sup>
Wymiary domu:	20.05 x 18.45 m
Minimalne wymiary działki:	33.05 x 26.45 m
Wysokość do kalenicy:	9,78 m / 32,08 ft
Powierzchnia dachu:	460 m <sup>2</sup>
Kąt nachylenia dachu:	48, 42, 39, 15 i 1,72 degrees

### Koszty realizacji:

Realizacja stanu surowego otwartego:	83 200
Realizacja stanu surowego zamkniętego:	114 000
Koszt robót wykończeniowych:	123 200
Realizacja domu pod klucz:	237 100

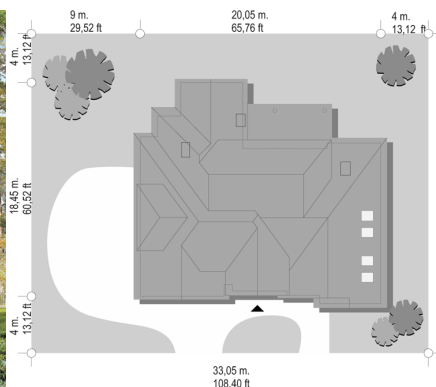
Koszty są podane w cenach netto, należy doliczyć podatek VAT

### Materiały:

- Foundations - Concrete benches
- External walls - triplicate: porotherm + wool + porotherm
- Internal walls - porotherm
- Ceiling - monolithic reinforced concrete
- Elevation - brick or stone
- Roof - tile



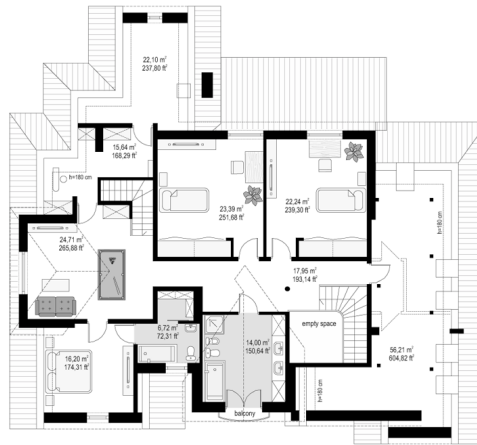
## CENA PROJEKTU: 1970.00 \$



	Energy-saving package	bezpł.
	Ventilation and fireplace package	90
	Central vacuum package	70
	The electronic version of the project	120
	Solar installation package	70
	Underfloor heating package	80
	Heat pump package	70
	Water jacket package	70
	Boiler for solid fuel package	80
	Air conditioning package	80
	Fencing projects	140
	Septic tanks sealed package	bezpł.

Dallas is a large residence having the compact body with two floors. The interior of the house is very spacious and the individual rooms are large. Living room, lobby, dining room and a fireplace room on the ground floor are combined in one space. Internal hall with stairs and entresol on the first floor is a very presentable element. Connections between the rooms were well thought out: in the entrance area there is a spacious walk-in closet. Transition from the garage is a connection with kitchen by convenient access to the pantry. Access to the recreation room upstairs in the seating area is provided by a separate staircase from the lobby on the ground floor. Dallas, despite its size consists of one compact body with hidden terrace. Its construction contrary to appearances, should not be complicated. In the building good insulation and energy-saving technologies were used. Location of the terrace provides the residents of intimacy and comfort of resting. Dallas house plan is also available in a mirror version.

## Rzuty:



## Elewacje:

