

Dane techniczne:

Kubatura:	1570 m ³
Powierzchnia zabudowy:	366.87 m ²
Powierzchnia całkowita:	366.87 m ²
Powierzchnia netto:	265.51 m ²
Powierzchnia użytkowa:	256.91 m ²
Wymiary domu:	27.3 x 21.92 m
Minimalne wymiary działki:	34.3 x 29.92 m
Wysokość do kalenicy:	7,40 m / 24,27 ft
Powierzchnia dachu:	520.04 m ²
Kąt nachylenia dachu:	30 degrees

Koszty realizacji:

Realizacja stanu surowego otwartego:	93 900
Realizacja stanu surowego zamkniętego:	138 400
Koszt robót wykończeniowych:	122 800
Realizacja domu pod klucz:	261 200

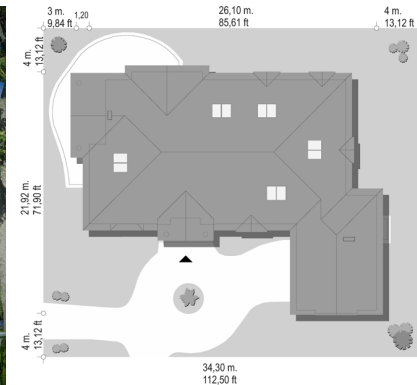
Koszty są podane w cenach netto, należy doliczyć podatek VAT

Materiały:

- Foundations - concrete bench and foundation walls with concrete blocks
- External walls - brick walls -porotherm 25 blocks + polystyrene + thin-layer plaster
- Ceiling - monolithic reinforced concrete
- Elevation - thin-layer plaster on polystyrene
- Roof - ceramic tile



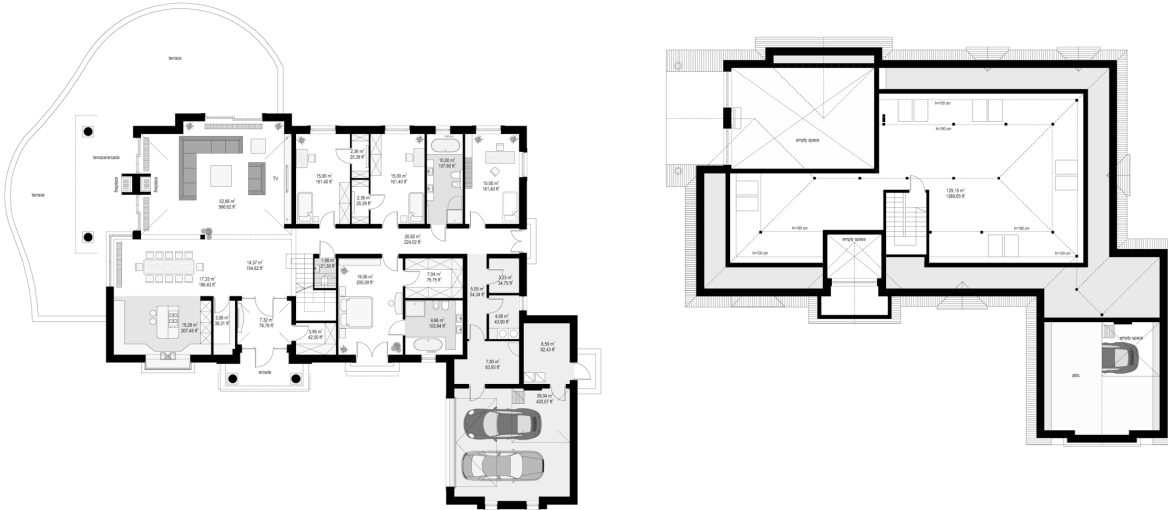
CENA PROJEKTU: 1970.00 \$



	Energy-saving package	bezpł.
	Ventilation and fireplace package	90
	Central vacuum package	70
	The electronic version of the project	120
	Solar installation package	70
	Underfloor heating package	80
	Heat pump package	70
	Water jacket package	70
	Boiler for solid fuel package	80
	Air conditioning package	80
	Fencing projects	140
	Septic tanks sealed package	bezpł.

Park Residence 2 is a slightly smaller version of the popular house Park Residence. House is a response to the desire of many investors to live in the extensive ground floor villa close to the surrounding garden. Living in one-story house gives great sense of comfort - there is no eternal running up the stairs. The house is designed for a family of 4 to 6 people. The interior of the park Residence 2 is divided into three parts: a living - a large open space part of the night - with the bedrooms bathrooms and dressing rooms and part of utility space - with utility rooms and a convenient garage. A representative living room, is connect with dining room, hall and kitchen and creates a very attractive interior. From the living room we go out to the garden, through extensive arcade with fireplace, or directly by patio doors in the back terrace. Comfortable entrance part - with a large hall and elegant staircase invites persons who enter. In the night part there are bedrooms. Parents' bedroom is a separate apartment with its own bathroom and a large walk-in closet. The advantage of house Park Residence 2 is certainly quite big utility and technical space, with a double garage and utility rooms. Above the ground floor there is plenty of space, which can be adapted in to the loft . Then we obtain additional 60 m2 of interior. Exterior architecture of house refers to the atmosphere of Polish manor in connection with the elements borrowed from American and French suburban villa. This architectural style makes the house timelessness - the building will never become unfashionable and never gets old. The house is practical and modern "compact" residence of the XXI.

Rzuty:



Elewacje:



MG Projekt Pracownia Architektoniczna s.c. ul. Uczniowska 14 03-112 Warszawa
tel.: 22 676 66 83, 22 676 66 88, fax: 22 676 66 82, mob.: 600 392 884,
tylko przedstawiciele 606 200 136, www.mgprojekt.com.pl,
mgprojekt@mgprojekt.com.pl

MG Projekt