

Dane techniczne:

Kubatura:	529 m ³
Powierzchnia zabudowy:	114.32 m ²
Powierzchnia całkowita:	114.32 m ²
Powierzchnia netto:	89.24 m ²
Powierzchnia użytkowa:	84.57 m ²
Wymiary domu:	11.63 x 10.87 m
Minimalne wymiary działki:	19.63 x 18.87 m
Wysokość do kalenicy:	6,65 m / 21,81 ft
Powierzchnia dachu:	187.85 m ²
Kąt nachylenia dachu:	30 degrees

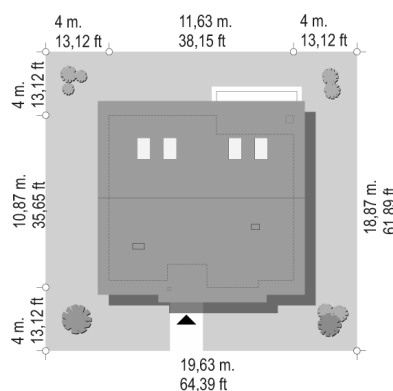
Koszty realizacji:

Realizacja stanu surowego otwartego:	31 600
Realizacja stanu surowego zamkniętego:	46 200
Koszt robót wykończeniowych:	41 700
Realizacja domu pod klucz:	87 800

Koszty są podane w cenach netto, należy doliczyć podatek VAT

Materiały:

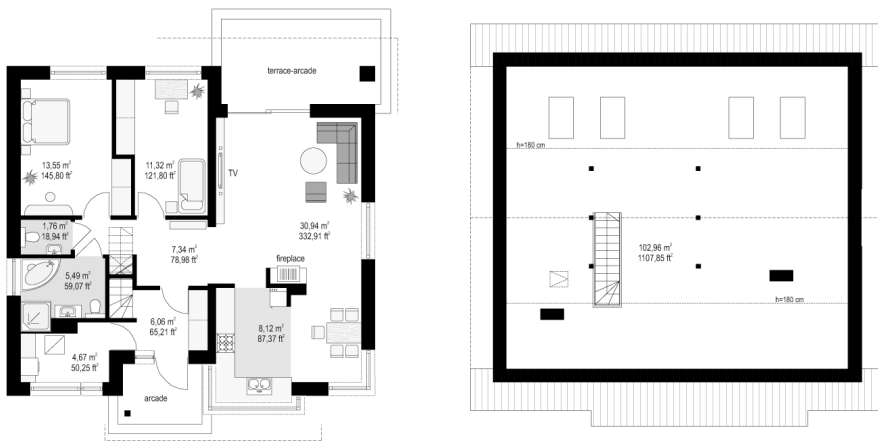
- Foundations - Concrete benches and foundation walls of concrete blocks
- Walls - brick walls - porotherm blocks 25 + polystyrene + thin-layer plaster
- Ceiling - Teriva
- Elevation - thin-layer plaster on polystyrene
- Roof - tile

**CENA PROJEKTU: 940.00 \$**

	Energy-saving package	bezpł.
	Ventilation and fireplace package	90
	Central vacuum package	70
	The electronic version of the project	120
	Solar installation package	70
	Underfloor heating package	80
	Heat pump package	70
	Water jacket package	70
	Boiler for solid fuel package	80
	Air conditioning package	80
	Fencing projects	140
	Septic tanks sealed package	bezpł.

House for three is a modern small house for the family of 3 - 4 people. This is a bungalow, covered by a gable roof. On the rectangular ground floor plan a spacious living room with dining area, combined with a partially open kitchen and hall was designed. Next we can find two bedrooms, bathroom and toilet, and a wide porch and a boiler room. From the porch by stairs you can get to the attic. In this house the attic is not usable, but you can easily adapt it to the attic with additional rooms. Nice large interior, a large part of the utility room this is something what distinguished this house from other small house plans. Outside the entrance to the house was highlighted by the arcade platform and bay kitchen window. From the garden wide glass doors from the living room to the terrace and garden was designed. The terrace is partly covered by arcade. Extras in modern style, as a fragments of walls cladding by wood forming together with windows division of the elevation into strips. Corner windows emphasize a modern but not pretentious architectural character. There is also a mirror version of this house plan

Rzuty:



Elewacje:

