

## Dane techniczne:

Kubatura:	880 m <sup>3</sup>
Powierzchnia zabudowy:	184.6 m <sup>2</sup>
Powierzchnia całkowita:	305.2 m <sup>2</sup>
Powierzchnia netto:	193.26 m <sup>2</sup>
Powierzchnia użytkowa:	185.75 m <sup>2</sup>
Wymiary domu:	15 x 15.6 m
Minimalne wymiary działki:	22.6 x 23.6 m
Wysokość do kalenicy:	9,45 m / 30,99 ft
Powierzchnia dachu:	252.58 m <sup>2</sup>
Kąt nachylenia dachu:	25 degrees

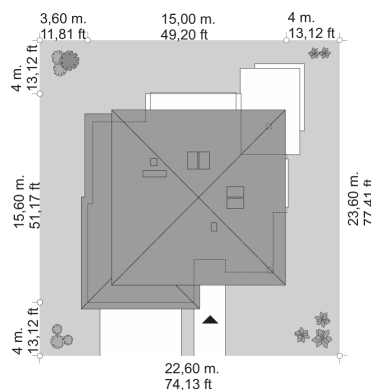
## Koszty realizacji:

Realizacja stanu surowego otwartego:	61 800
Realizacja stanu surowego zamkniętego:	89 200
Koszt robót wykończeniowych:	86 600
Realizacja domu pod klucz:	175 800

Koszty są podane w cenach netto, należy doliczyć podatek VAT

## Materiały:

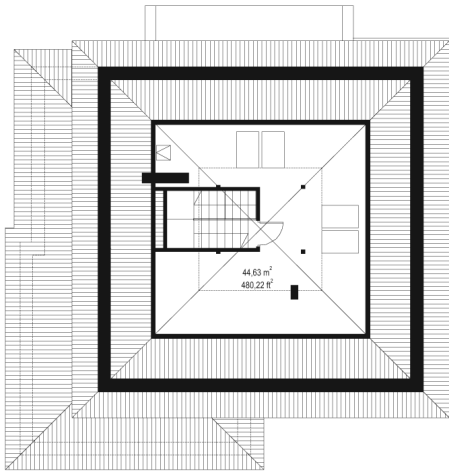
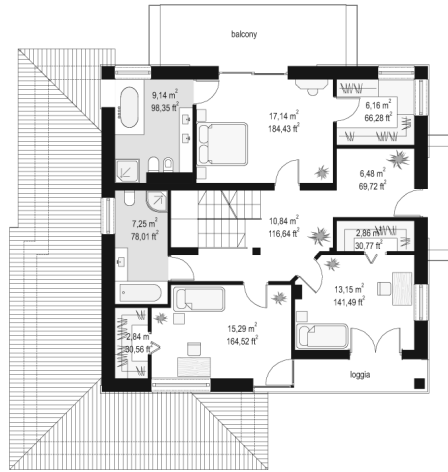
- Foundations - concrete bench and foundation walls with concrete blocks
- External walls - brick walls -porotherm 25 blocks + polystyrene + thin-layer plaster
- Ceiling - Teriva
- Elevation - thin-layer plaster on polystyrene
- Roof - ceramic tile

**CENA PROJEKTU: 1140.00 \$**

	Energy-saving package	bezpł.
	Ventilation and fireplace package	90
	Central vacuum package	70
	The electronic version of the project	120
	Solar installation package	70
	Underfloor heating package	80
	Heat pump package	70
	Water jacket package	70
	Boiler for solid fuel package	80
	Air conditioning package	80
	Fencing projects	140
	Septic tanks sealed package	bezpł.

Opal 2 house plan is a modified version of the popular detached house Opal. The house was a little enlarged in comparison to its predecessor. Opal 2 has a larger garage and utility part. The external appearance of the building has changed - Opal 2 is even more presentable and comfortable. The house was designed for a family of four to six people who prefer storey buildings, without the "slant", who appreciate the toned modern architecture, with interesting glazing, facades decorated by diverse finishing materials, such as wood or stone. The clear shape of the building consists of storey part covered by roofed envelope, and built another garage and bay windows. The interior of the house is divided into a living area on the ground floor (with adjoining utility rooms), and the bedrooms upstairs. One space of the living room, dining room, hall and kitchen creates a comfortable surface area. Centrally located representative stairs, or fireplace wall - are decorations of the ground floor interior. On the ground floor there were also a place for additional space - office or guest bedroom. Truly great is here the garage, with plenty of space for additional equipment. There is also quite big boiler room. On the first floor we have the luxury apartment of parents - with its own bathroom and dressing room, and two bedrooms for children with bathrooms and dressing rooms. There is also room for an extra small room, for example, laundry-room, drying-room, freely according to the wishes of the Investor. In the attic an extra space can be utilized for utility purposes. Energy efficient solutions in the house will significantly reduce the cost of exploitation of your house - especially heating costs.

Rzuty:



Elewacje:





MG Projekt Pracownia Architektoniczna s.c. ul. Uczniowska 14 03-112 Warszawa  
tel.: 22 676 66 83, 22 676 66 88, fax: 22 676 66 82, mob.: 600 392 884,  
tylko przedstawiciele 606 200 136, [www.mgprojekt.com.pl](http://www.mgprojekt.com.pl),  
[mgprojekt@mgprojekt.com.pl](mailto:mgprojekt@mgprojekt.com.pl)

MG Projekt