

## Dane techniczne:

|                            |                       |
|----------------------------|-----------------------|
| Kubatura:                  | 601 m <sup>3</sup>    |
| Powierzchnia zabudowy:     | 128.04 m <sup>2</sup> |
| Powierzchnia całkowita:    | 128.04 m <sup>2</sup> |
| Powierzchnia netto:        | 98.38 m <sup>2</sup>  |
| Powierzchnia użytkowa:     | 95.53 m <sup>2</sup>  |
| Wymiary domu:              | 14.19 x 9.76 m        |
| Minimalne wymiary działki: | 22.19 x 17.76 m       |
| Wysokość do kalenicy:      | 6,38 m / 20,93 ft     |
| Powierzchnia dachu:        | 194.05 m <sup>2</sup> |
| Kąt nachylenia dachu:      | 30 degrees            |

## Koszty realizacji:

|  |         |
|--|---------|
| Realizacja stanu surowego otwartego:   | 39 200  |
| Realizacja stanu surowego zamkniętego: | 55 400  |
| Koszt robót wykończeniowych:           | 46 500  |
| Realizacja domu pod klucz:             | 101 900 |

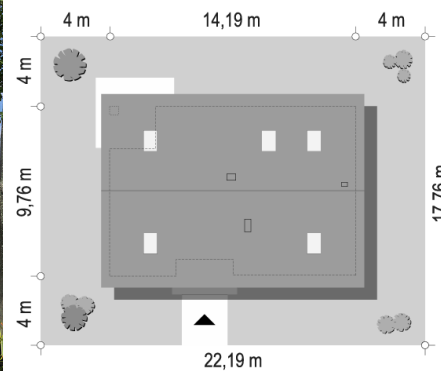
Koszty są podane w cenach netto, należy doliczyć podatek VAT

## Materiały:

- Fundamenty - betonowe ławy i ściany fundamentowe z bloczków betonowych
- External walls - brick walls -porotherm 25 blocks + polystyrene + thin-layer plaster
- Ceiling - Teriva
- Elevation - thin-layer plaster on polystyrene
- Roof - tile



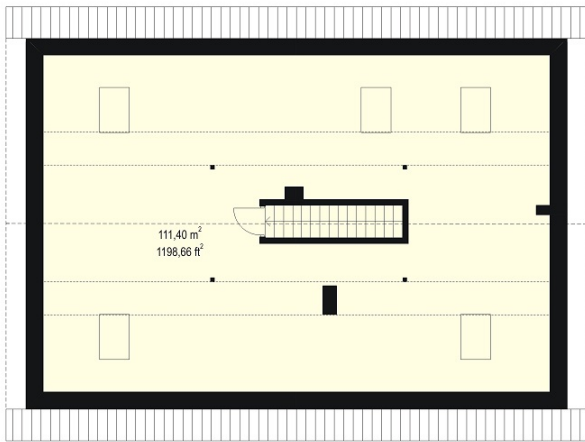
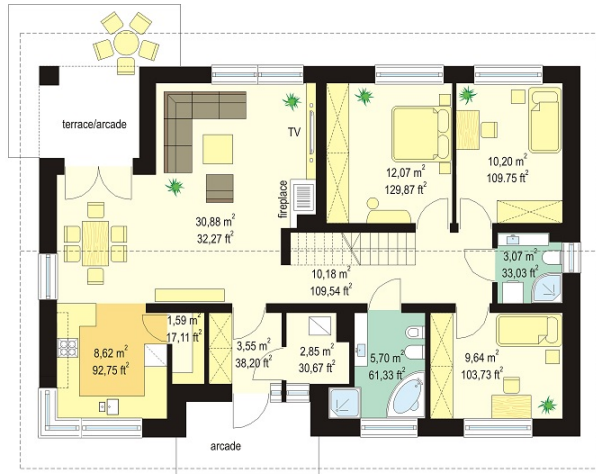
## CENA PROJEKTU: 940.00 \$



|  |                                       |        |
|--|---------------------------------------|--------|
|  | Energy-saving package                 | bezpł. |
|  | Ventilation and fireplace package     | 90     |
|  | Central vacuum package                | 70     |
|  | The electronic version of the project | 120    |
|  | Solar installation package            | 70     |
|  | Underfloor heating package            | 80     |
|  | Heat pump package                     | 70     |
|  | Water jacket package                  | 70     |
|  | Boiler for solid fuel package         | 80     |
|  | Air conditioning package              | 80     |
|  | Fencing projects                      | 140    |
|  | Septic tanks sealed package           | bezpł. |

House plan Olive 2 is the next version of the project Olive - this time with a concrete ceiling above the ground floor and attic which can be adapt to the usable attic. This bungalow can be in a very easy way increased almost about 40 percent. In the attic you can successfully accommodate two additional bedrooms and a bathroom. The project is alternatively solved attic / loft: basic variant Olives 2 "A" has a single-space in the attic to any development, a variant "B" has a loft consisting of an additional two rooms with private bathroom (additional area of the attic is 34.77 m<sup>2</sup>). The house has a very simple form, built on a rectangular plan, covered with a gable roof. Curiously arranged windows, wall cladding, arcades and niches give the building a dynamic modern appearance, proving that story house can also be interesting. All necessary facilities are located on the ground floor: large day part, with a living room, hall, dining area and kitchen, and three bedrooms with bathrooms. Good insulation of partitions increase the energy efficiency of the building. In connection with ventilation with recuperation house will be very economical in the future exploitation. You can replace a gas boiler for solid fuel boiler. Olive 2 is a house designed for the developmental family, which will maybe needed in the future, additional space (the attic). Alternatively, it is a proposition for investors who wish to have an additional space for storage outside the living quarters. Olive 2 will fit perfectly in any environment. This house plan does not require a large plot. The building is unpretentious, it has logically designed interior.

## Rzuty:



## Elewacje:



