

Dane techniczne:

Kubatura:	783 m ³
Powierzchnia zabudowy:	156.51 m ²
Powierzchnia całkowita:	270.99 m ²
Powierzchnia netto:	221.28 m ²
Powierzchnia użytkowa:	184 m ²
Wymiary domu:	14.92 x 13.12 m
Minimalne wymiary działki:	21.92 x 21.12 m
Wysokość do kalenicy:	8,63 m / 28,31 ft
Powierzchnia dachu:	291 m ²
Kąt nachylenia dachu:	40 degrees

Koszty realizacji:

Realizacja stanu surowego otwartego:	47 100
Realizacja stanu surowego zamkniętego:	71 300
Koszt robót wykończeniowych:	70 300
Realizacja domu pod klucz:	141 600

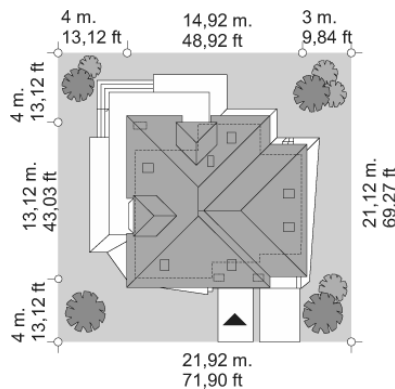
Koszty są podane w cenach netto, należy doliczyć podatek VAT

Materiały:

- Foundations - concrete
- External walls - bilayer porotherm + wool
- Ceiling - Teriva
- Elevation - thin-layer plaster
- Roof - Ceramic tile



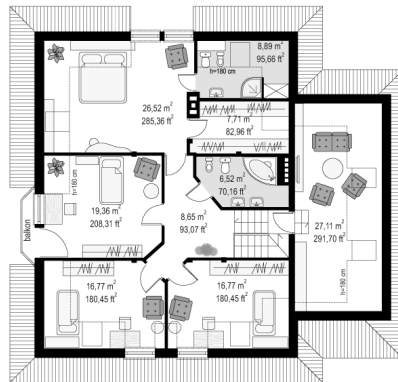
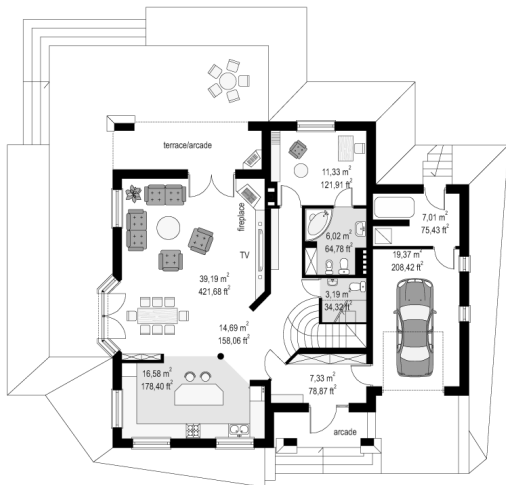
CENA PROJEKTU: 1040.00 \$



	Energy-saving package	bezpł.
	Ventilation and fireplace package	90
	Central vacuum package	70
	The electronic version of the project	120
	Solar installation package	70
	Underfloor heating package	80
	Heat pump package	70
	Water jacket package	70
	Boiler for solid fuel package	80
	Air conditioning package	80
	Fencing projects	140
	Septic tanks sealed package	bezpł.

House plan Agnes 2 is a variant version of the house plan Agnes. The house has been reduced, but there has been planned a single garage. The building has acquired a new exterior appearance: changed roof dormers, arcade entrance with additional columns with buttresses. Fragments of walls and socle have been covered with stone, which fits well with the smooth surfaces of the walls and roof. The interior of the house on the ground floor is a large living room with dining area, connected to the lobby and spacious kitchen with an island. On the ground floor extra room with a separate bathroom and a garage with boiler room has been designed. On the attic four bedrooms and two bathrooms has been design. Parents' bedroom has its own bathroom and dressing room. Above the garage is an attic to any adaptation. Agnes house plan is available in 2 versions to choose from for oil or gas boiler installation, and in a mirror version.

Rzuty:



Elewacje:

