

Dane techniczne:

Kubatura:	675 m ³
Powierzchnia zabudowy:	141.17 m ²
Powierzchnia całkowita:	222.98 m ²
Powierzchnia netto:	154.08 m ²
Powierzchnia użytkowa:	124.73 m ²
Wymiary domu:	15.86 x 9.73 m
Minimalne wymiary działki:	23.31 x 18.98 m
Wysokość do kalenicy:	7,20 m / 23,62 ft
Powierzchnia dachu:	247.45 m ²
Kąt nachylenia dachu:	38 degrees

Koszty realizacji:

Realizacja stanu surowego otwartego:	38 500
Realizacja stanu surowego zamkniętego:	64 500
Koszt robót wykończeniowych:	60 000
Realizacja domu pod klucz:	124 500

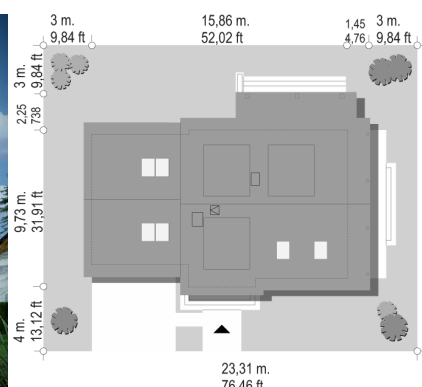
Koszty są podane w cenach netto, należy doliczyć podatek VAT

Materiały:

- Foundations - Concrete benches and foundation walls of concrete blocks
- External walls - brick walls - concrete blocks + polystyrene + thin-layer plaster
- Ceiling - Teriva
- Elevation - thin-layer plaster on polystyrene
- Roof - tile



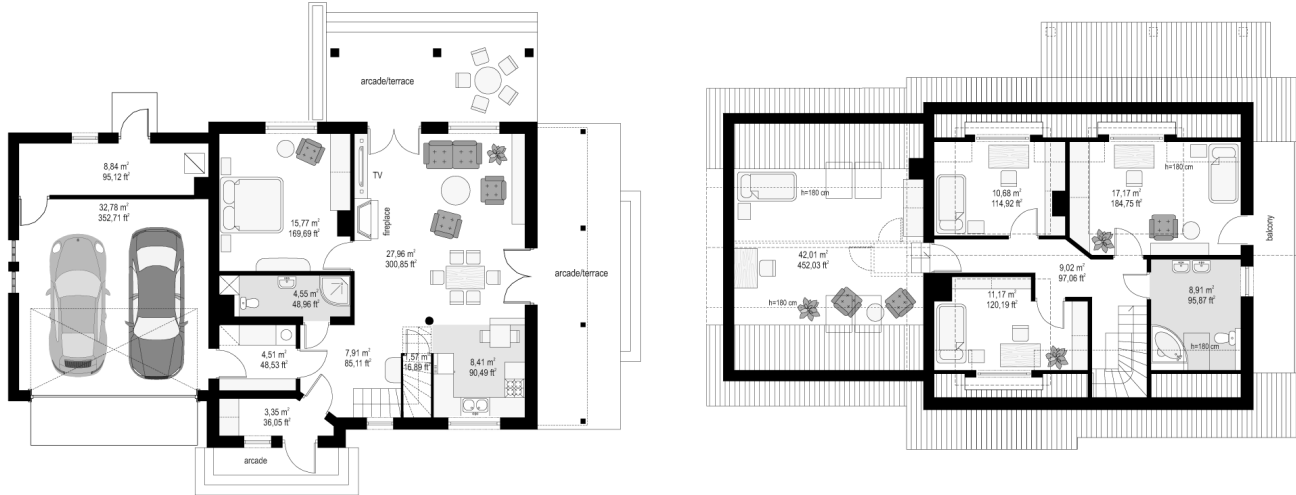
CENA PROJEKTU: 970.00 \$



	Energy-saving package	bezpł.
	Ventilation and fireplace package	90
	Central vacuum package	70
	The electronic version of the project	120
	Solar installation package	70
	Underfloor heating package	80
	Heat pump package	70
	Water jacket package	70
	Boiler for solid fuel package	80
	Air conditioning package	80
	Fencing projects	140
	Septic tanks sealed package	bezpł.

Breeze 4 house plan is a variant version of the Breeze house plan. Breeze 4, is a year-round, one-storeyed house with the usable attic, this house is perfect for a family for the 4-6 people. The simple body of building is covered by a gable roof. To the main body of building the garage part with a double garage has been built. The architecture of the house is a combination of modern materials and colors with the traditional form of the building. Thanks to this house perfect fit in any surroundings. The interior of the house is divided into a living area on the ground floor and bedrooms on the top floor. On the ground floor, besides to a living room with kitchen and hall (with stairs) an extra room - for example for a study, a comfortable bathroom, boiler room and garage for two cars, with utility room have been designed. On the top floor there are three bedrooms with the bathroom, and the attic. The attic in this house plan is treated as a no usable space, but it can be easily adapted for utility purposes. Thanks to that we will obtain one large extra room or two smaller rooms. The house has a simple construction, is easy with the building and inexpensive. Thanks to a compact body in it, you can get a good performance efficiency. Additional advantage of the building are two roofed, corner terrace this is something very useful on sunny as well as during the rainy days.

Rzuty:



Elewacje:

