

Dane techniczne:

Kubatura:	1446 m ³
Powierzchnia zabudowy:	266.1 m ²
Powierzchnia całkowita:	432.48 m ²
Powierzchnia netto:	279.04 m ²
Powierzchnia użytkowa:	269.44 m ²
Wymiary domu:	21.2 x 17.71 m
Minimalne wymiary działki:	30.3 x 25.71 m
Wysokość do kalenicy:	9,14 m / 29,98 ft
Powierzchnia dachu:	426.2 m ²
Kąt nachylenia dachu:	25 degrees

Koszty realizacji:

Realizacja stanu surowego otwartego:	83 700
Realizacja stanu surowego zamkniętego:	130 400
Koszt robót wykończeniowych:	108 500
Realizacja domu pod klucz:	238 900

Koszty są podane w cenach netto, należy doliczyć podatek VAT

Materiały:

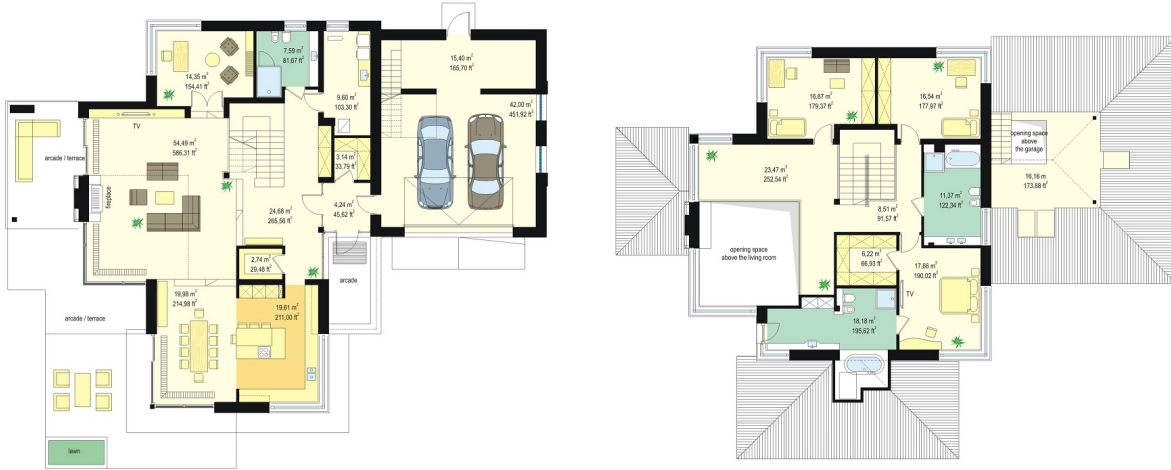
- Foundations - Concrete benches and foundation walls of concrete blocks
- External walls - brick walls - porotherm blocks polystyrene 25 + thin-layer plaster
- Ceiling - monolithic reinforced concrete(ground floor and first floor)
- Elevation - thin-layer plaster on polystyrene
- Roof - ceramic tile

**CENA PROJEKTU: 1870.00 \$**

	Energy-saving package	bezpł.
	Ventilation and fireplace package	90
	Central vacuum package	70
	The electronic version of the project	120
	Solar installation package	70
	Underfloor heating package	80
	Heat pump package	70
	Water jacket package	70
	Boiler for solid fuel package	80
	Air conditioning package	80
	Fencing projects	140
	Septic tanks sealed package	bezpł.

House with a view is a luxurious modern villa, for a family 4 - 6 people, to build on a plot of unfavorable relative to the location of the world. The house was designed as a spreading storey residence, connecting with surrounding garden and numerous glazing and with open and roofed terraces. Block of the house consists in a substantial part of first floor and the three ground floor wings forming in the letter "T". The house plan is so universal that it can be placed on each plot. The entrance part and the terrace part from the living room create two separate semi-open courtyards: front and garden. Large corner windows with rare divisions are a card house. The elevation is varied with numerous details, sandstone cladding, rustication plaster and wood trim. The whole is covered with a soft roof with wide eaves. The house has a modern but toned architecture. It is quite and elegance. Thanks combination of good details house architecture never gets old and does not go out of fashion. One of the main attractions of the villa are the glazing and the biggest attraction is the two-storey glass corner of the sitting room, connecting living room with empty space with a terrace and garden. Other glass: in the dining room, the kitchen, bedrooms, or at the entrance to the house is further enhanced by the effect of the interior openness. The space is a luxury! The interior of the house were designed according to this thought. The ground floor is a large open living area - living room, dining room, hall, kitchen. On the ground floor there is an extra room - study or guest bedroom. On the top floor there are bedrooms of parents and children, with bathrooms and dressing rooms. The first floor has a large entresol above the living room which can be used as an extra room. House with a view is a house plan for special people, with vision, with the desire to live in an extraordinary surroundings of beautiful interiors.

Rzuty:



Elewacje:

