

Dane techniczne:

| | |
|----------------------------|-----------------------|
| Kubatura: | 1217 m ³ |
| Powierzchnia zabudowy: | 143.2 m ² |
| Powierzchnia całkowita: | 419.26 m ² |
| Powierzchnia netto: | 258.89 m ² |
| Powierzchnia użytkowa: | 237 m ² |
| Wymiary domu: | 16.2 x 10.9 m |
| Minimalne wymiary działki: | 24.2 x 19.88 m |
| Wysokość do kalenicy: | 8,64 m / 28,34 ft |
| Powierzchnia dachu: | 222.2 m ² |
| Kąt nachylenia dachu: | 40 degrees |

Koszty realizacji:

| | |
|--|---------|
| Realizacja stanu surowego otwartego: | 74 400 |
| Realizacja stanu surowego zamkniętego: | 109 500 |
| Koszt robót wykończeniowych: | 115 800 |
| Realizacja domu pod klucz: | 225 200 |

Koszty są podane w cenach netto, należy doliczyć podatek VAT

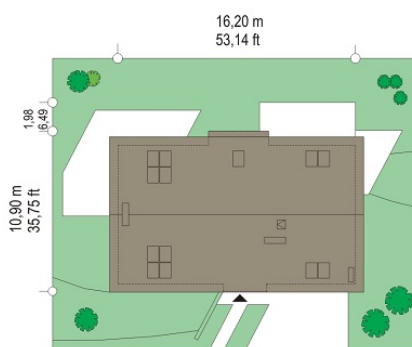
Materiały:

- Foundations - Concrete benches
- External walls - ceramic blocks Max + insulation
- Internal walls - ceramic blocks Max Ceiling - Teriva
- Roof - tile

NOTE!

Implementation costs relate the version with a basement.

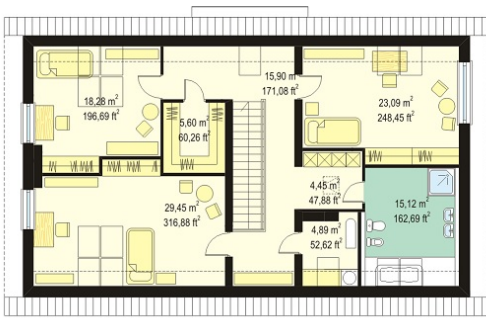
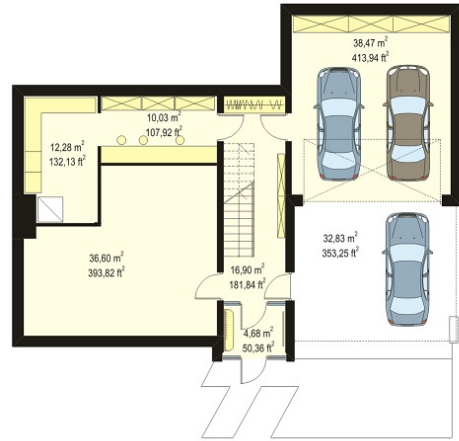
Version without cellar: Implementation cost of turnkey house is 590 954,00 zł

**CENA PROJEKTU: 1420.00 \$**

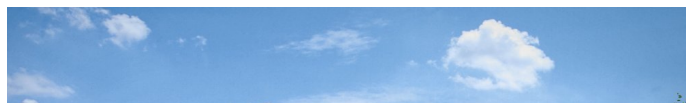
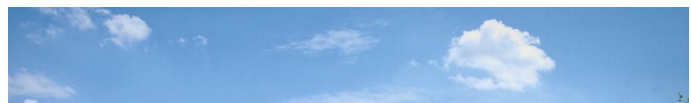
| | | |
|--|---------------------------------------|--------|
| | Energy-saving package | bezpł. |
| | Ventilation and fireplace package | 90 |
| | Central vacuum package | 70 |
| | The electronic version of the project | 120 |
| | Solar installation package | 70 |
| | Underfloor heating package | 80 |
| | Heat pump package | 70 |
| | Water jacket package | 70 |
| | Boiler for solid fuel package | 80 |
| | Air conditioning package | 80 |
| | Fencing projects | 140 |
| | Septic tanks sealed package | bezpł. |

House on the hill is very functional house with a compact body of building, modern expression and simple form. The body of building has been integrated into the escarpment on the plot - natural or artificial. Thanks to that an extensive basement with garage and carport was hidden. Thanks to the carport, which cuts down on the corner of the house at its base, body of building became more dynamic. The interior of the house was planned in an original way, by introducing a number of original solutions, which will gave the house unique impression. House on the hill stands out above all by a large front glass windows, connecting hall on the ground floor with the hall and entrance porch in the basement. Stairs - with a clear simple system are also visible from outside of the house. A characteristic feature of the House on the Hill is a central located hall and stair and a clear separation the day, night and technical part of house. One space very comfortable to use part of the day. Many wardrobes, closets, utility rooms - as a pantry, laundry. Large comfortable garage and additional carport, and the very sharp divisions in the wall at a blank and glazed surfaces - all this creates a unique look. There is also a mirror version of this house plan.

Rzuty:



Elewacje:



MG Projekt Pracownia Architektoniczna s.c. ul. Uczniowska 14 03-112 Warszawa
 tel.: 22 676 66 83, 22 676 66 88, fax: 22 676 66 82, mob.: 600 392 884,
 tylko przedstawiciele 606 200 136, www.mgprojekt.com.pl,
 mgprojekt@mgprojekt.com.pl

MG Projekt