

Dane techniczne:

Kubatura:	620 m ³
Powierzchnia zabudowy:	129.11 m ²
Powierzchnia całkowita:	190.85 m ²
Powierzchnia netto:	114.52 m ²
Powierzchnia użytkowa:	109.41 m ²
Wymiary domu:	14.35 x 9.97 m
Minimalne wymiary działki:	22.35 x 17.97 m
Wysokość do kalenicy:	7,54 m / 24,73 ft
Powierzchnia dachu:	189.1 m ²
Kąt nachylenia dachu:	38 degrees

Koszty realizacji:

Realizacja stanu surowego otwartego:	32 100
Realizacja stanu surowego zamkniętego:	51 400
Koszt robót wykończeniowych:	65 600
Realizacja domu pod klucz:	117 000

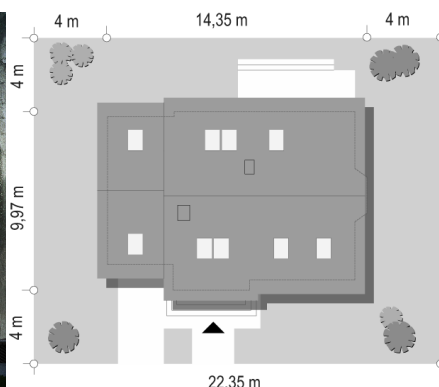
Koszty są podane w cenach netto, należy doliczyć podatek VAT

Materiały:

- Foundations - Concrete benches and foundation walls of concrete blocks
- External walls - brick walls - concrete blocks + polystyrene + thin-layer plaster
- Ceiling - Teriva
- Elevation - thin-layer plaster on polystyrene
- Roof - tile



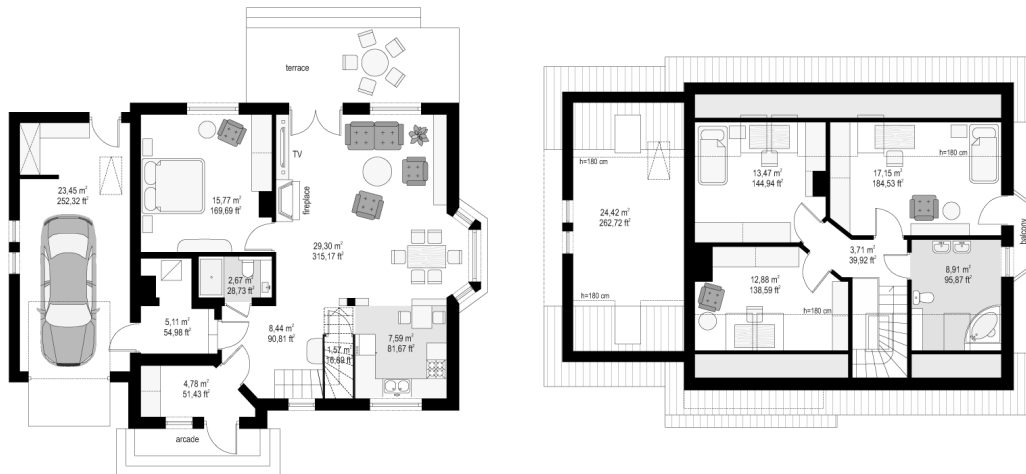
CENA PROJEKTU: 970.00 \$



	Energy-saving package	bezpł.
	Ventilation and fireplace package	90
	Central vacuum package	70
	The electronic version of the project	120
	Solar installation package	70
	Underfloor heating package	80
	Heat pump package	70
	Water jacket package	70
	Boiler for solid fuel package	80
	Air conditioning package	80
	Fencing projects	140
	Septic tanks sealed package	bezpł.

Breeze 5 house plan is the next game in the popular Breeze 3 house plan project - this time in the standard energy-saving, adapted to the requirements of the Scheme. The house is very well insulated, has a modern energy efficient heating systems and mechanical ventilation with recuperation. With its compact shape and advantageous ratio to the volume of external walls, heating your home will cost 2-3 times less than in the average single family home. Breeze 5 house plan is one-storeyed house with the usable attic and a garage part added to the main body of the house. This house is perfect for a family for the 4-5 people. On the ground floor there is a living area with living room, kitchen and hall, and an additional room with a private bathroom. In the utility part of the house, a garage with a corner storage and boiler room is designed. On the top floor you will find three bedrooms and bathroom. Above the garage is an attic that can be adapted for an extra room. Breeze 5 house plan is a simple and inexpensive in construction house. And thanks to an energy-efficient building solutions and technologies will be also cheap in later exploitation. This house is a grate proposal for practical and modern-minded investors.

Rzuty:



Elewacje:

