

Dane techniczne:

Kubatura:	605 m ³
Powierzchnia zabudowy:	127.02 m ²
Powierzchnia całkowita:	188.28 m ²
Powierzchnia netto:	109.41 m ²
Powierzchnia użytkowa:	109.41 m ²
Wymiary domu:	14.26 x 9.89 m
Minimalne wymiary działki:	22.26 x 17.89 m
Wysokość do kalenicy:	7,20 m / 23,62 ft
Powierzchnia dachu:	189.55 m ²
Kąt nachylenia dachu:	38 degrees

Koszty realizacji:

Realizacja stanu surowego otwartego:	31 300
Realizacja stanu surowego zamkniętego:	47 700
Koszt robót wykończeniowych:	48 200
Realizacja domu pod klucz:	95 900

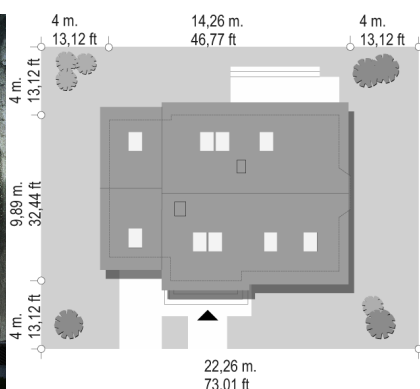
Koszty są podane w cenach netto, należy doliczyć podatek VAT

Materiały:

- Foundations - Concrete benches and foundation walls of concrete blocks
- External walls - brick walls - concrete blocks + polystyrene + thin-layer plaster
- Ceiling - Teriva
- Elevation - thin-layer plaster on polystyrene
- Roof - tile



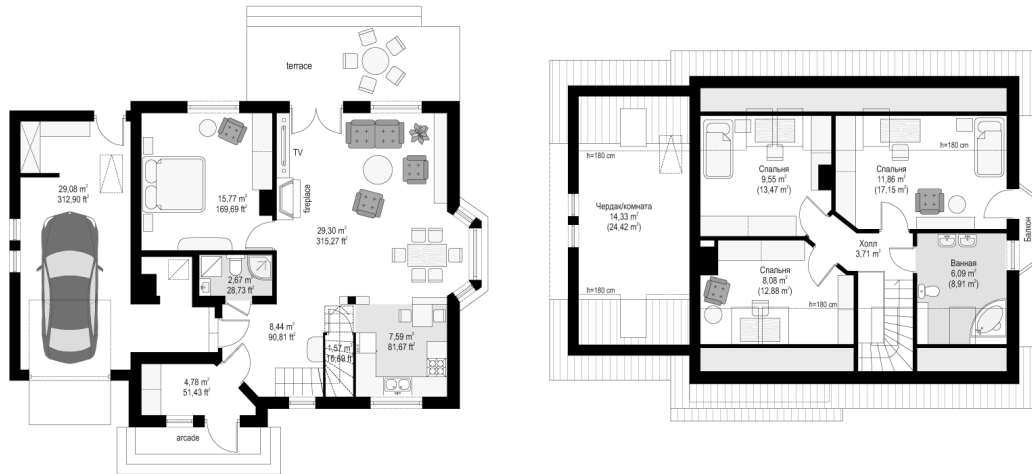
CENA PROJEKTU: 970.00 \$



	Energy-saving package	bezpł.
	Ventilation and fireplace package	90
	Central vacuum package	70
	The electronic version of the project	120
	Solar installation package	70
	Underfloor heating package	80
	Heat pump package	70
	Water jacket package	70
	Boiler for solid fuel package	80
	Air conditioning package	80
	Fencing projects	140
	Septic tanks sealed package	bezpł.

Breeze 6 house plan is the next version of the popular Breeze houses. The house has a floor area less than 110 m², so that qualifies as a house plan for most people applying for payment and participation in the program. This house plan, although a small area, have all the necessary functions. On the ground floor a nice living room with hall and kitchen, and an extra room and bathroom is designed. The boiler room was hidden in the annex in the garage, so as to reduce the usable area (this project foresees gas boiler, but it can also be a solid fuel boiler). On the top floor there are three bedrooms and bathroom. The house has a simple body and is covered by gable roof. To the main residential part a garage part is built. The house has a simple construction, is inexpensive and not complicated in construction. Thanks to energy-saving technologies will be also cheap in the later exploitation, and inexpensive in construction house. This house is a grate proposal for practical and modern-minded investors. Breeze 6 house plan is ideal proposition for a young couple with two children, for investors who respect the economy and want to build a reasonable house - convenient, comfortable, and not overdone.

Rzuty:



Elewacje:

