

156.83 m²

House on a medal - semi-detached

Dane techniczne:

Kubatura:	742 m ³
Powierzchnia zabudowy:	128.86 m ²
Powierzchnia całkowita:	222.65 m ²
Powierzchnia netto:	173.3 m ²
Powierzchnia użytkowa:	156.83 m ²
Wymiary domu:	13.97 x 11.35 m
Minimalne wymiary działki:	17.97 x 19.35 m
Wysokość do kalenicy:	8,43 m / 27,65 ft
Powierzchnia dachu:	229.11 m ²
Kąt nachylenia dachu:	40 i 50 degrees

Koszty realizacji:

Realizacja stanu surowego otwartego:	32 400
Realizacja stanu surowego zamkniętego:	62 700
Koszt robót wykończeniowych:	58 600
Realizacja domu pod klucz:	121 200

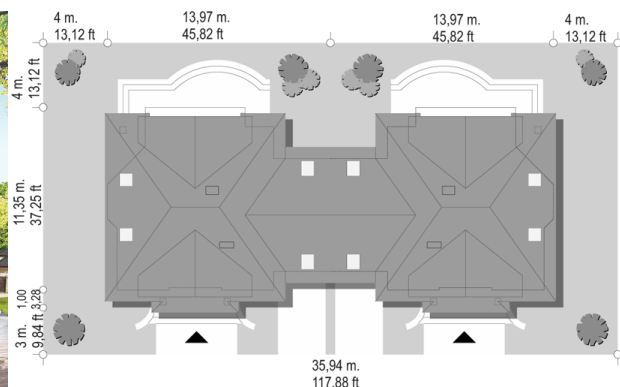
Koszty są podane w cenach netto, należy doliczyć podatek VAT

Materiały:

- Foundations - Concrete bilayer walls - porotherm + mineral wool
- Ceiling - Teriva
- Roof - ceramic tile



CENA PROJEKTU: 1250.00 \$

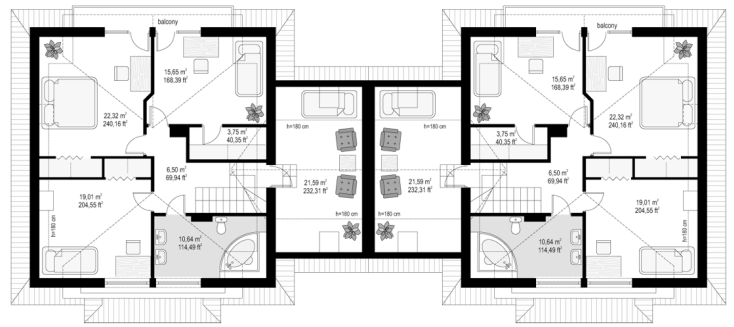
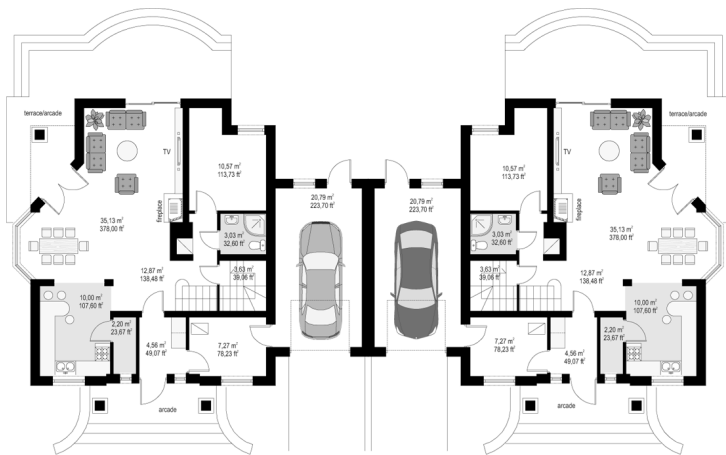


	Energy-saving package	bezpł.
	Ventilation and fireplace package	90
	Central vacuum package	70
	The electronic version of the project	120
	Solar installation package	70
	Underfloor heating package	80
	Heat pump package	70
	Water jacket package	70
	Boiler for solid fuel package	80
	Air conditioning package	80
	Fencing projects	140
	Septic tanks sealed package	bezpł.

House on a medal is a semi-detached family house, there is also available freestanding version of this house. The house is designed for two families of 4-5 people. House has been designed on a rectangular plan and is covered by a hipped roof, there is built garage which is a link between two halves of a twin. Interior: on the ground floor there is a living room with dining area and a small arcade, semi-open kitchen with pantry, extra room with private bathroom - separated from the living area, boiler room and a garage. At the attic there are three bedrooms, a comfortable bathroom and an extra room over the garage. The house is functionally and economically designed. Interesting dormers, entrance and garden arcade, dining room and large window from the living room to the terrace - give an attractive appearance. There is a freestanding version of this house - with half of semi-detached house.

* **Technical data relate to half of semi-detached house** *

Rzuty:



Elewacje:

