

Dane techniczne:

Kubatura:	1170 m ³
Powierzchnia zabudowy:	304.87 m ²
Powierzchnia całkowita:	302.51 m ²
Powierzchnia netto:	215.63 m ²
Powierzchnia użytkowa:	259.28 m ²
Wymiary domu:	22.7 x 20.17 m
Minimalne wymiary działki:	29.7 x 28.78 m
Wysokość do kalenicy:	7,29 m / 23,91 ft
Powierzchnia dachu:	423.5 m ²
Kąt nachylenia dachu:	30 degrees

Koszty realizacji:

Realizacja stanu surowego otwartego:	89 100
Realizacja stanu surowego zamkniętego:	118 800
Koszt robót wykończeniowych:	57 600
Realizacja domu pod klucz:	176 300

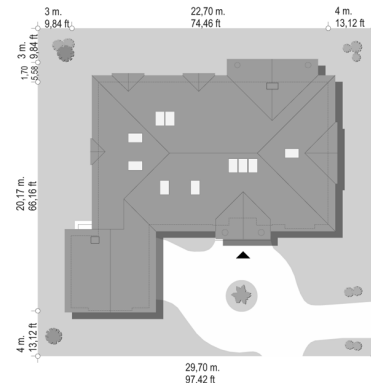
Koszty są podane w cenach netto, należy doliczyć podatek VAT

Materiały:

- Foundations - concrete bench and foundation walls with concrete blocks
- External walls - brick walls -porotherm 25 blocks + polystyrene + thin-layer plaster
- Ceiling - monolithic reinforced concrete
- Elevation - thin-layer plaster on polystyrene
- Roof - ceramic tile



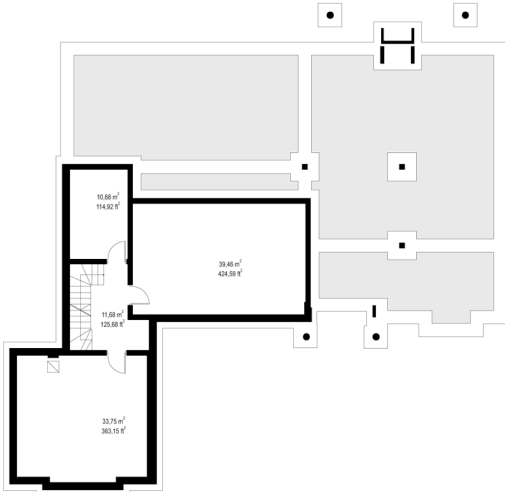
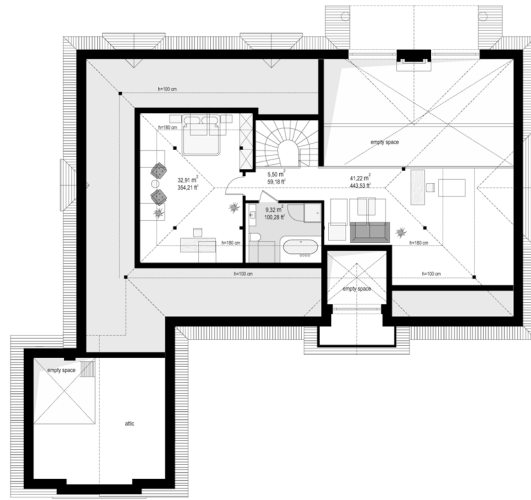
CENA PROJEKTU: 1940.00 \$



	Energy-saving package	bezpł.
	Ventilation and fireplace package	90
	Central vacuum package	70
	The electronic version of the project	120
	Solar installation package	70
	Underfloor heating package	80
	Heat pump package	70
	Water jacket package	70
	Boiler for solid fuel package	80
	Air conditioning package	80
	Fencing projects	140
	Septic tanks sealed package	bezpł.

Park Residence 3 is the next version of popular house in a series of "Residence park." The house was designed as a reduced version, with smaller external dimensions, building area and ground floor area. However to the building was added the attic of over 50 m², and more than hundred-meter basement. When we together we calculate all floors house is big. You can build it with or without a basement and with usable attic, by left behind non-usable attic. It all depends on the investor's needs and spaciousness of its portfolio. Basement and attic can be finished in the second stage. It will spread the construction cost for a longer period, and additional surface provides a buffer backup space, which may prove useful after a few years of living. House was designed as a suburban or rural residence, referring to the architecture of Polish manor houses and villas with American suburbs. The house was locked in a rectangular block, with an added part of the garage. The whole is covered with a mild hipped roof. Elevations are decorated with details: entrance porch, bay windows, arcades, interesting window arches. All items are stylish, but the whole thing is set in modern times, with modern materials and colors. Thanks to the this combination, is a classic and simultaneously modern - such architecture never gets old. The interior of the house: on the ground floor was designed all the necessary space. This is a great proposition for a family of 4 to 5 people. There is a single daily space open to the loft in the attic. It is also a part with bedrooms, bathrooms and dressing rooms. The utility part is a garage and utility room. In the basic version house available to residents is a big attic, with additional rooms and a large cellar. You can of course do the house without a basement. This is a matter of the investor's decision. This house plan modern materials and energy-efficient solutions. House - as its scale - it has a fairly simple design and should be easy to build. Keeping your house with energy-efficient solutions and compact block will also be within reasonable amounts. The specified costs of house concern the Park Residence 3 with a basement and attic. Costs without basement are given separately.

Rzuty:



Elewacje:



