

## Dane techniczne:

Kubatura:	749 m <sup>3</sup>
Powierzchnia zabudowy:	130.86 m <sup>2</sup>
Powierzchnia całkowita:	224.65 m <sup>2</sup>
Powierzchnia netto:	175.3 m <sup>2</sup>
Powierzchnia użytkowa:	158.83 m <sup>2</sup>
Wymiary domu:	14.13 x 11.35 m
Minimalne wymiary działki:	21.13 x 19.35 m
Wysokość do kalenicy:	8,42 m / 26,62 ft
Powierzchnia dachu:	225.6 m <sup>2</sup>
Kąt nachylenia dachu:	50, 40 i 34 degrees

## Koszty realizacji:

Realizacja stanu surowego otwartego:	38 400
Realizacja stanu surowego zamkniętego:	60 000
Koszt robót wykończeniowych:	58 700
Realizacja domu pod klucz:	118 700

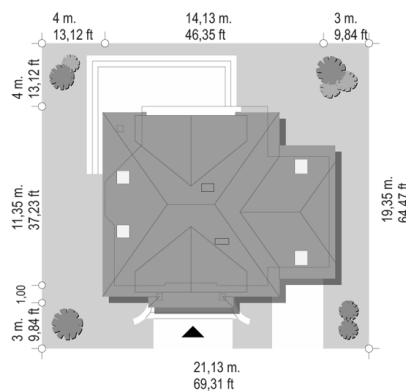
Koszty są podane w cenach netto, należy doliczyć podatek VAT

## Materiały:

- Foundations - Concrete benches, walls of concrete blocks
- External walls - bilayer walls with porothermu
- Ceiling - Teriva
- Elevation - thin-layer plaste
- Roof - tile



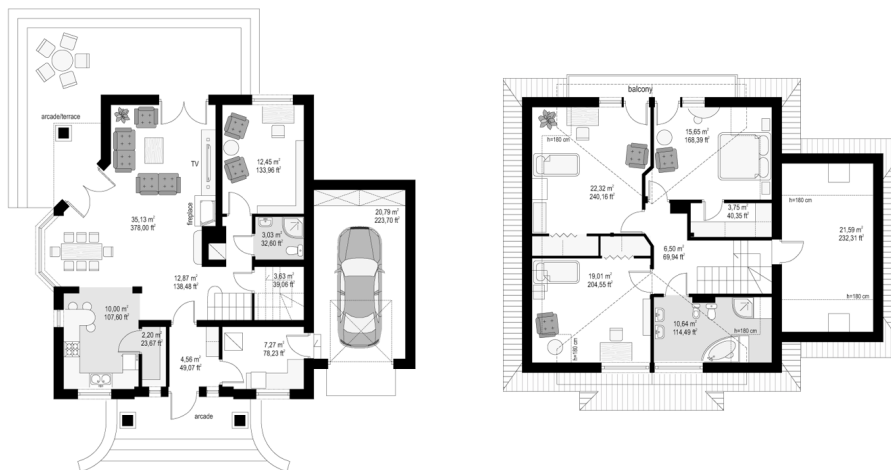
## CENA PROJEKTU: 940.00 \$



	Energy-saving package	bezpł.
	Ventilation and fireplace package	90
	Central vacuum package	70
	The electronic version of the project	120
	Solar installation package	70
	Underfloor heating package	80
	Heat pump package	70
	Water jacket package	70
	Boiler for solid fuel package	80
	Air conditioning package	80
	Fencing projects	140
	Septic tanks sealed package	bezpł.

House on a medal 2 is a single version of the House on a medal, with a roof ended by pediment over the garage part. This house plan is perfect for a family of 4 - 5 people. This house can be built even on a fairly narrow plot. Undivided interior of living room with dining area and lobby, and an extra room with a bathroom on the ground floor, and with three comfortable bedrooms on the attic (with minimal slants), create a comfortable place to live. In addition, the interior there are several auxiliary rooms - dressing rooms and lockers. The attic above the garage can be used as an attic or living space. There is also a mirror version of House on a medal 2.

## Rzuty:



## Elewacje:

