

Dane techniczne:

Kubatura:	998 m ³
Powierzchnia zabudowy:	170.99 m ²
Powierzchnia całkowita:	331.59 m ²
Powierzchnia netto:	231.08 m ²
Powierzchnia użytkowa:	226.84 m ²
Wymiary domu:	12 x 15.6 m
Minimalne wymiary działki:	18 x 25.67 m
Wysokość do kalenicy:	11,73 m / 38,47 ft
Powierzchnia dachu:	301 m ²
Kąt nachylenia dachu:	40 degrees

Koszty realizacji:

Realizacja stanu surowego otwartego:	60 900
Realizacja stanu surowego zamkniętego:	91 400
Koszt robót wykończeniowych:	82 900
Realizacja domu pod klucz:	174 200

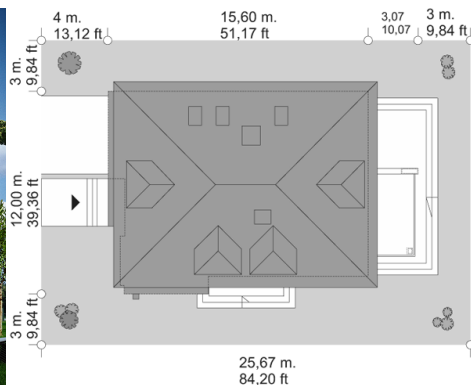
Koszty są podane w cenach netto, należy doliczyć podatek VAT

Materiały:

- Foundations - concrete bench and foundation walls with concrete blocks
- External walls - brick walls -porotherm 25 airbrick + polystyrene + thin-layer plaster
- Ceiling - Teriva above the ground floor and floor
- Elevation - thin-layer plaster on polystyrene
- Roof - ceramic tile



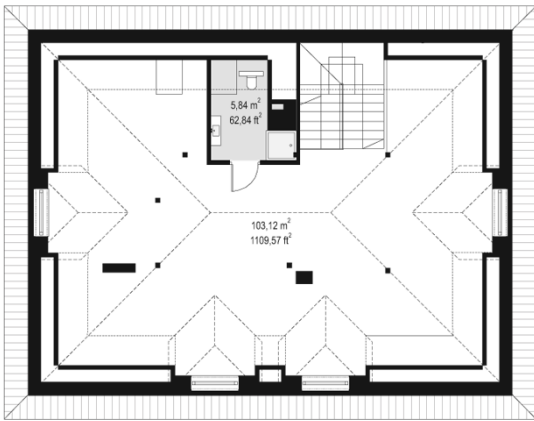
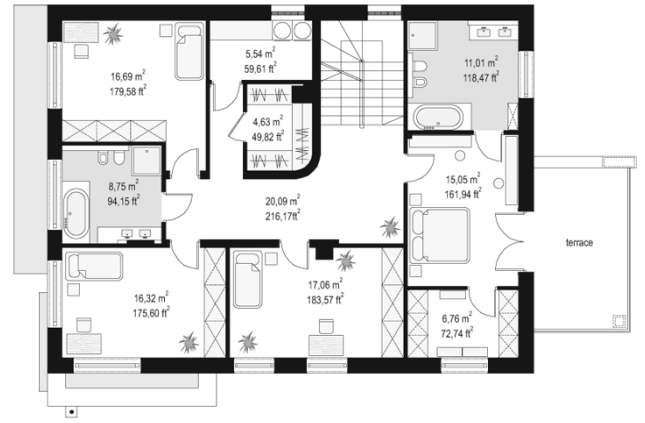
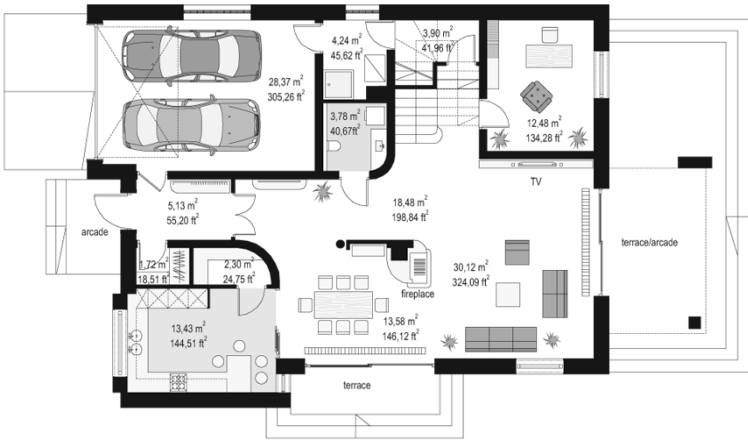
CENA PROJEKTU: 1280.00 \$



	Energy-saving package	bezpł.
	Ventilation and fireplace package	90
	Central vacuum package	70
	The electronic version of the project	120
	Solar installation package	70
	Underfloor heating package	80
	Heat pump package	70
	Water jacket package	70
	Boiler for solid fuel package	80
	Air conditioning package	80
	Fencing projects	140
	Septic tanks sealed package	bezpł.

Agate 2 house plan is a new version of Agate, this time in a more modern style, adapted to the municipal building on a fairly narrow and a small plot. Investors often having a small space want to build a sizable house with lots of rooms. There is no other choice but to go "up", increasing the height and number of floors in house. Agate 2 is an excellent choice for this type of building. The house has a compact silhouette, planned on a rectangular plan. The house is storeyed, finished by the attic with dormer windows, covered with a hipped roof. Proportional body, well-chosen details and colors make the building look attractive, representative, and at the same time the scale is not exaggerated. The architecture of house can be described as a combination of traditional forms with modern details and materials. The interior of house: on the ground floor a living room, dining room, kitchen with pantry, extra room (office or a guest bedroom), bathroom, porch with a cloakroom and a garage with utility room. On the first floor are four bedrooms, including parents' apartment with its own large bathroom and dressing room, and garden terrace, widely available second bathroom, dressing room and laundry. Attic is a single space of 80 m² with bathroom, to any development. The house is very functional, energy-efficient and relatively simple in construction. This is a very sensible proposal of the project sizeable house on an urban plot.

Rzuty:



Elewacje:





MG Projekt Pracownia Architektoniczna s.c. ul. Uczniowska 14 03-112 Warszawa
tel.: 22 676 66 83, 22 676 66 88, fax: 22 676 66 82, mob.: 600 392 884,
tylko przedstawiciele 606 200 136, www.mgprojekt.com.pl,
mgprojekt@mgprojekt.com.pl

MG Projekt