

Dane techniczne:

Kubatura:	855 m ³
Powierzchnia zabudowy:	163.07 m ²
Powierzchnia całkowita:	177.57 m ²
Powierzchnia netto:	108.28 m ²
Powierzchnia użytkowa:	98.89 m ²
Wymiary domu:	15.82 x 10.79 m
Minimalne wymiary działki:	22.82 x 19.83 m
Wysokość do kalenicy:	6,40 m / 20,99 ft
Powierzchnia dachu:	233 m ²
Kąt nachylenia dachu:	30 degrees

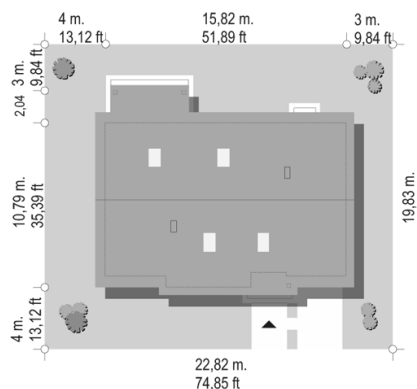
Koszty realizacji:

Realizacja stanu surowego otwartego:	39 400
Realizacja stanu surowego zamkniętego:	57 800
Koszt robót wykończeniowych:	55 700
Realizacja domu pod klucz:	113 400

Koszty są podane w cenach netto, należy doliczyć podatek VAT

Materiały:

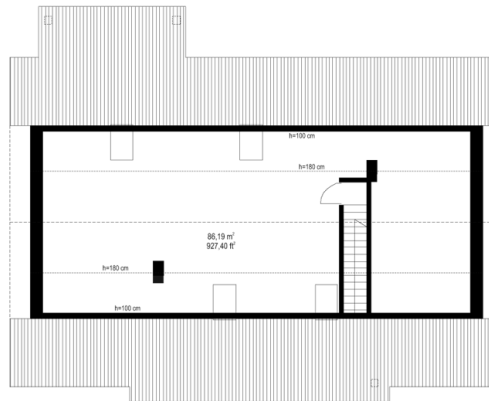
- Foundations - concrete bench and foundation walls with concrete blocks
- External walls - brick walls -porotherm 25 blocks + polystyrene + thin-layer plaster
- Ceiling - monolithic reinforced concrete
- Elevation - thin-layer plaster on polystyrene
- Roof - ceramic tile

**CENA PROJEKTU: 940.00 \$**

	Energy-saving package	bezpł.
	Ventilation and fireplace package	90
	Central vacuum package	70
	The electronic version of the project	120
	Solar installation package	70
	Underfloor heating package	80
	Heat pump package	70
	Water jacket package	70
	Boiler for solid fuel package	80
	Air conditioning package	80
	Fencing projects	140
	Septic tanks sealed package	bezpł.

House plan Amber 2 is a new variant of the very popular house plan Amber, with a similar shape, but with changed function of rooms, and a concrete ceiling above the ground floor, raised roof, rafter trusses roof, and attic to adapt as usable attic. House has a compact rectangular block hidden under one roof for the residential part and the garage (which reduces the cost of the roof). On the ground level we designed everything what might need 4-5 people family. So we have a living room with an exit to the covered terrace, a corner fireplace and a TV wall, very nice and easy to arrange kitchen, separate comfortable hall, three bedrooms, two bathrooms. For this into the house we get very spacious atrium (provided with stairs to the attic), and in utility part of the house we have a convenient garage and a large boiler room with additional access to the garden. The house has extra space in these places where architects often stingy the surface, full-sized boiler room, large atrium or hall, which is just a part of the living room. We enter the house through the corner arcade. We get to the garden through a large covered terrace accessible from the living room. Above the ground floor there is a spacious attic that can be converted into a as usable attic. The compact block of the house, very good warming increase the energy efficiency of this house. House is easy to adapt to the NF40 standard. Simple design will make it easy to build. Thanks to a small area the house can be also qualified for the MDM program.

Rzuty:



Elewacje:

