

Dane techniczne:

Kubatura:	1230 m ³
Powierzchnia zabudowy:	259.39 m ²
Powierzchnia całkowita:	442.34 m ²
Powierzchnia netto:	274.22 m ²
Powierzchnia użytkowa:	262.45 m ²
Wymiary domu:	20 x 15.6 m
Minimalne wymiary działki:	31.36 x 23.6 m
Wysokość do kalenicy:	8,73 m / 28,63 ft
Powierzchnia dachu:	477.6 m ²
Kąt nachylenia dachu:	42 degrees

Koszty realizacji:

Realizacja stanu surowego otwartego:	80 700
Realizacja stanu surowego zamkniętego:	131 300
Koszt robót wykończeniowych:	97 900
Realizacja domu pod klucz:	229 200

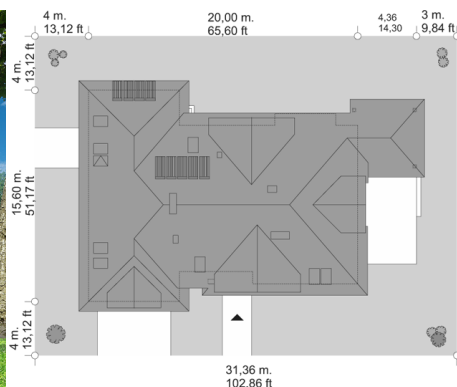
Koszty są podane w cenach netto, należy doliczyć podatek VAT

Materiały:

- Foundations - concrete bench and foundation walls with concrete blocks
- External walls - brick walls -porotherm 25 blocks + polystyrene + thin-layer plaster
- Ceiling - Teriva
- Elevation - thin-layer plaster on polystyrene
- Roof - tile



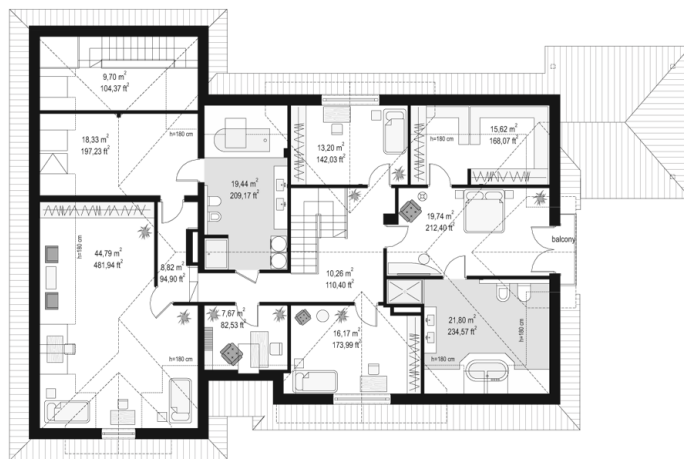
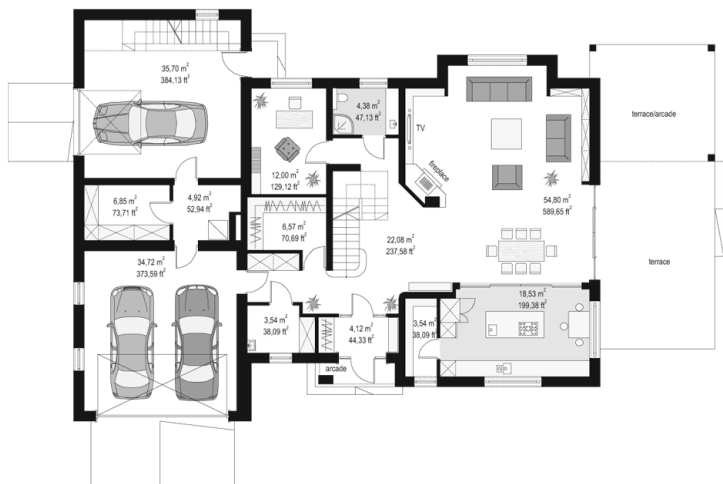
CENA PROJEKTU: 1320.00 \$



	Energy-saving package	bezpł.
	Ventilation and fireplace package	90
	Central vacuum package	70
	The electronic version of the project	120
	Solar installation package	70
	Underfloor heating package	80
	Heat pump package	70
	Water jacket package	70
	Boiler for solid fuel package	80
	Air conditioning package	80
	Fencing projects	140
	Septic tanks sealed package	bezpł.

Joanna 2 house plan is a new version of the Joanna basic. This time, the house was enlarged. Exterior styling is changed. Elevation is decorated with clinker cladding. House gained a new different colors. Joanna 2 is the ideal suburban or rural residence, for investors seeking large space. It's a big house with lots of rooms and with a beautiful open, daily space and a very extensive part of the garage with utility part. Body of house is a typical for Polish roofer, with hipped roof covering a building in the shape of the letter "T". The traditional body of the house with attic and dormer windows has been combined with modern materials and colors. The whole creates a house with a modern but toned style. The interior was divided into daily and the utility part on the ground floor and in the attic was designed bedrooms and a spare recreational space and storage. On the ground floor the main room is the living room, connected with hall, kitchen and pantry. From the living room we go out to the partially roofed terrace. On the ground floor there is provided additional room with a bathroom, dressing room and utility part consisting of the garage, boiler room, and two additional storage rooms. In the attic we have a beautiful apartment parents with dressing rooms, bath room and terrace, children's bedrooms, a great common bathroom, extra guest room, and recreational space above the garage, with additional two attics. The house is truly luxurious.

Rzuty:



Elewacje:

