

## Dane techniczne:

Kubatura:	456 m <sup>3</sup>
Powierzchnia zabudowy:	92.72 m <sup>2</sup>
Powierzchnia całkowita:	154.72 m <sup>2</sup>
Powierzchnia netto:	92.52 m <sup>2</sup>
Powierzchnia użytkowa:	87.18 m <sup>2</sup>
Wymiary domu:	12.13 x 11.93 m
Minimalne wymiary działki:	19.13 x 18.93 m
Wysokość do kalenicy:	8,99 m / 29,49 ft
Powierzchnia dachu:	97.08 m <sup>2</sup>
Kąt nachylenia dachu:	45 degrees

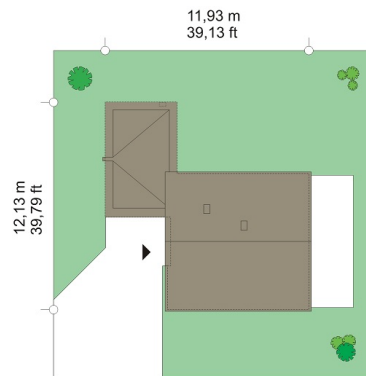
## Koszty realizacji:

Realizacja stanu surowego otwartego:	28 400
Realizacja stanu surowego zamkniętego:	48 000
Koszt robót wykończeniowych:	40 600
Realizacja domu pod klucz:	88 500

Koszty są podane w cenach netto, należy doliczyć podatek VAT

## Materiały:

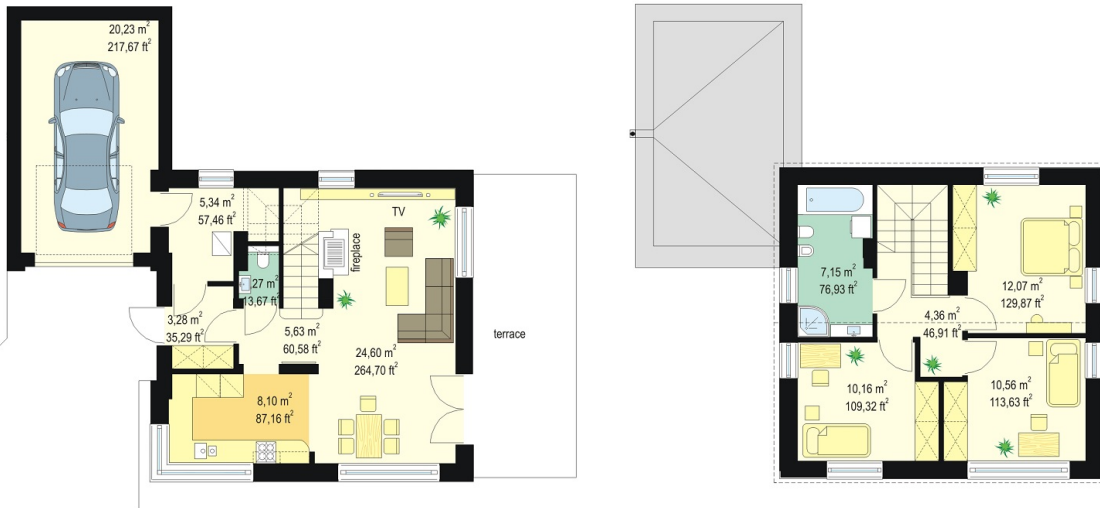
- Foundations - concrete bench and foundation walls with concrete blocks
- External walls - brick walls -porotherm 25 blocks + polystyrene + thin-layer plaster
- Ceiling - monolithic reinforced concrete
- Elewacje - tynk cienkowarstwowy na styropianie
- Roof - ceramic tile

**CENA PROJEKTU: 900.00 \$**

	Energy-saving package	bezpł.
	Ventilation and fireplace package	90
	Central vacuum package	70
	The electronic version of the project	120
	Solar installation package	70
	Underfloor heating package	80
	Heat pump package	70
	Water jacket package	70
	Boiler for solid fuel package	80
	Air conditioning package	80
	Fencing projects	140
	Septic tanks sealed package	bezpł.

Economical house plan is a small single-family house, for people who like modern solutions and do not like roofs with eaves. Attic in the project has so high jamb wall that there are almost no slant. This allows fully utilized the attic. House was designed on the plan close to a square. Attic is covered by a gable, symmetrical roof. To the main body was built another garage. House can be set in different ways on the plot - the entrance door to the road, or garage door to enter the plot. Simple, modern body, symmetrically and proportionally placed windows - all these makes the house well fit in every neighborhood. Modern materials and interesting colors of the building, go along with energy efficiency and simple design. On the ground floor there is a daily space, with living room, hall and kitchen, with nicely exposed staircase and fireplace. In the attic there are three bedrooms with a bathroom. On the ground floor there is also built another large boiler room and a garage. Of course you can also build a house without a garage. Thanks to its compact body and a very good isolation, Economical house is energy efficient. Is very easy to adapt to the NF40 standard. Construction is very simple, and allow for a quick and inexpensive building, and subsequent economical exploitations. Small surface of house allows to qualify the project MDM program requirements.

## Rzuty:



## Elewacje:

