

## Dane techniczne:

Kubatura:	623 m <sup>3</sup>
Powierzchnia zabudowy:	130.1 m <sup>2</sup>
Powierzchnia całkowita:	205.95 m <sup>2</sup>
Powierzchnia netto:	133.4 m <sup>2</sup>
Powierzchnia użytkowa:	127.55 m <sup>2</sup>
Wymiary domu:	13.95 x 10.6 m
Minimalne wymiary działki:	21.34 x 19.7 m
Wysokość do kalenicy:	8,58 m / 28,14 ft
Powierzchnia dachu:	166.25 m <sup>2</sup>
Kąt nachylenia dachu:	42 degrees

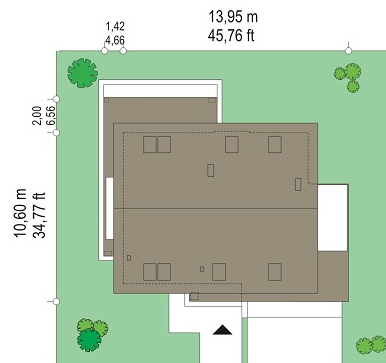
## Koszty realizacji:

Realizacja stanu surowego otwartego:	40 340
Realizacja stanu surowego zamkniętego:	61 470
Koszt robót wykończeniowych:	57 660
Realizacja domu pod klucz:	119 130

Koszty są podane w cenach netto, należy doliczyć podatek VAT

## Materiały:

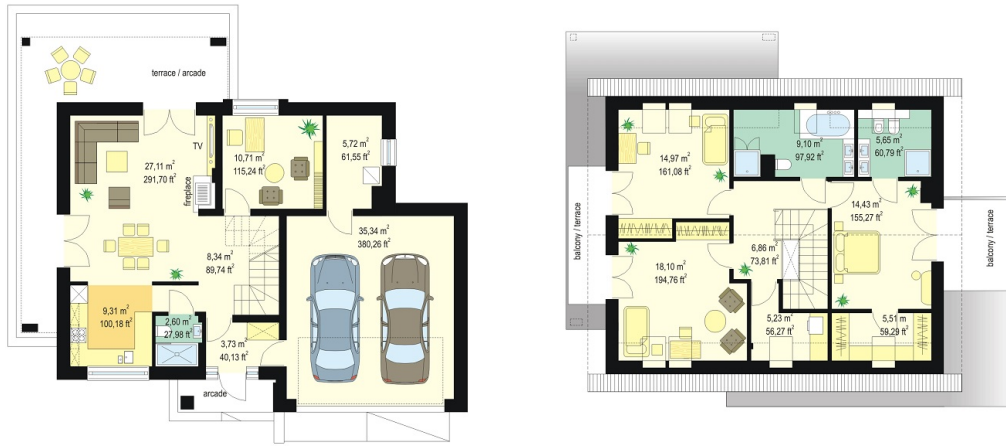
- Foundations - concrete bench and foundation walls with concrete blocks
- External walls - brick walls -porotherm 25 blocks + polystyrene + thin-layer plaster
- Ceiling - Teriva
- Elevation - thin-layer plaster on polystyrene
- Roof - sheet metal seam (alternatively tile)

**CENA PROJEKTU: 1070.00 \$**

	Energy-saving package	bezpł.
	Ventilation and fireplace package	90
	Central vacuum package	70
	The electronic version of the project	120
	Solar installation package	70
	Underfloor heating package	80
	Heat pump package	70
	Water jacket package	70
	Boiler for solid fuel package	80
	Air conditioning package	80
	Fencing projects	140
	Septic tanks sealed package	bezpł.

House plan Albatross 2 is a variant version of the popular house plan Albatross with double garage. It is a simple in building and inexpensive house with usable attic for the family of 4-5 people. The body of building was designed on a rectangular plan - to the main body was build another double garage. Attic is topped with a symmetrical gable roof. This project is a connection of the economic and functional solutions, with a modern and interesting aesthetics of the building. The house has this "something": interestingly selected materials, good proportions, the right size of the windows, and above all - functional, reasonably planned interior. Ground floor of house is the living space comfortable with living room, central hall with ornate staircase, kitchen partially open to the living room and an extra room - study or guest bedroom and the economic part of the house i.e. garage and boiler room. On the attic, thanks to the high elbow walls three are spacious bedrooms, including a parents' bedroom with a separate bathroom and a dressing room. In addition, there is provided a place for laundry - possibly storage. Albatross 2 despite of a small area house is spacious and comfortable and will provide luxury conditions for life, even for a large family. Energy efficiency solutions - good insulation, compact shape of the building - allow to reduce future exploitation costs, and the simple construction of house ensures less stress during construction.

## Rzuty:



## Elewacje:

