

Dane techniczne:

Kubatura:	1210 m ³
Powierzchnia zabudowy:	309.17 m ²
Powierzchnia całkowita:	360.19 m ²
Powierzchnia netto:	218.02 m ²
Powierzchnia użytkowa:	208.83 m ²
Wymiary domu:	20.3 x 19.9 m
Minimalne wymiary działki:	28.3 x 29.52 m
Wysokość do kalenicy:	7,22 m/23,68 ft
Powierzchnia dachu:	426.6 m ²
Kąt nachylenia dachu:	30 degrees

Koszty realizacji:

Realizacja stanu surowego otwartego:	71 500
Realizacja stanu surowego zamkniętego:	111 130
Koszt robót wykończeniowych:	100 180
Realizacja domu pod klucz:	211 310

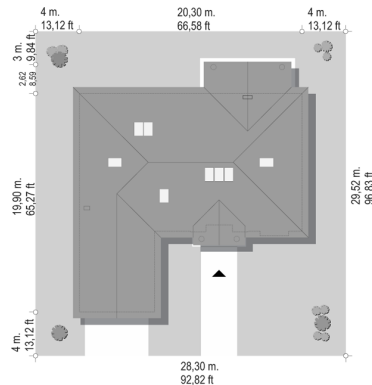
Koszty są podane w cenach netto, należy doliczyć podatek VAT

Materiały:

- Foundations - concrete bench and foundation walls with concrete blocks
- External walls - brick walls -porotherm 25 blocks + polystyrene + thin-layer plaster
- Ceiling - monolithic reinforced concrete
- Elevation - thin-layer plaster on polystyrene
- Roof - ceramic tile



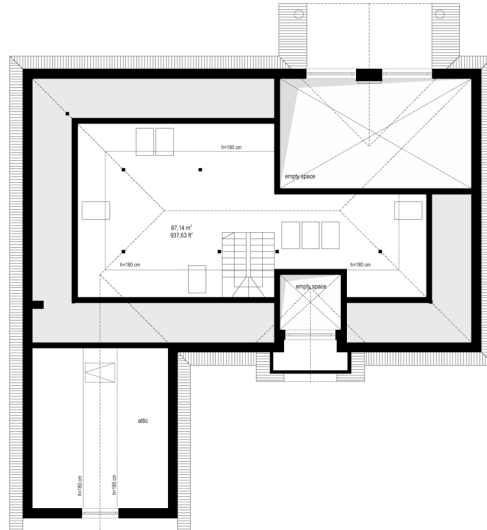
CENA PROJEKTU: 1760.00 \$



	Energy-saving package	bezpł.
	Ventilation and fireplace package	90
	Central vacuum package	70
	The electronic version of the project	120
	Solar installation package	70
	Underfloor heating package	80
	Heat pump package	70
	Water jacket package	70
	Boiler for solid fuel package	80
	Air conditioning package	80
	Fencing projects	140
	Septic tanks sealed package	bezpł.

Villa park 2 house plan is the next version of the popular house plan Villa park. This time the house has a slightly narrower block. It is a comfortable ground floor villa, architecturally, referring to American residence. The details used in combine modern materials with a classical form. This house has never gets old and gets bored - will always be fashionable. The building was designed as a ground-floor building, which is the most convenient for life. All rooms are on one level. All the rooms - both living and bedrooms have direct contact with the surrounding garden. Front of the building highlights the representative entrance portico, with large glass doors leading to a comfortable atrium. Protruding before front elevation garage allows for slight withdrawal of the front wall. It creates the same proper distance from the road. In the garden elevation is designed large covered terrace - place for family for gatherings and relaxation. The house is covered with a proportional roof. The interior of the house was divided into day and night part. Living room with emptiness connects to the dining room, hall, kitchen and create nearly hundred-meter interior. This space is pure luxury. In the part there are three bedrooms (including master bedroom with dressing room), two bathrooms, and useful laundry. From the entrance hall, we pass through the cloakroom of utility room and a large garage with utility space and boiler room. Above the ground floor we have a large attic, which can be left as a home magazine, or adapt on a usable attic. If the investor has the hunger of space and plans to build a house, where finally will feel freely it is a project for him. The building has good insulation and modern energy-saving materials. House will not be very expensive to maintain. We have a mirror version of this house plan and other versions: basic (Villa Park), and the largest one (Villa Park 3).

Rzuty:



Elewacje:



MG Projekt Pracownia Architektoniczna s.c. ul. Uczniowska 14 03-112 Warszawa
 tel.: 22 676 66 83, 22 676 66 88, fax: 22 676 66 82, mob.: 600 392 884,
 tylko przedstawiciele 606 200 136, www.mgprojekt.com.pl,
mgprojekt@mgprojekt.com.pl

MG Projekt