

## Dane techniczne:

Kubatura:	972 m <sup>3</sup>
Powierzchnia zabudowy:	223.53 m <sup>2</sup>
Powierzchnia całkowita:	335.3 m <sup>2</sup>
Powierzchnia netto:	218.49 m <sup>2</sup>
Powierzchnia użytkowa:	205.69 m <sup>2</sup>
Wymiary domu:	20.62 x 13.01 m
Minimalne wymiary działki:	27.62 x 21.01 m
Wysokość do kalenicy:	7,14 m / 23,42 ft
Powierzchnia dachu:	356.4 m <sup>2</sup>
Kąt nachylenia dachu:	30 degrees

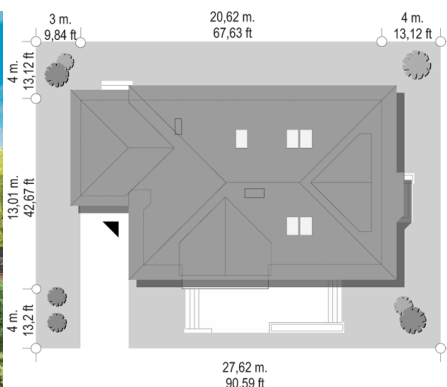
## Koszty realizacji:

Realizacja stanu surowego otwartego:	57 800
Realizacja stanu surowego zamkniętego:	86 800
Koszt robót wykończeniowych:	82 000
Realizacja domu pod klucz:	168 800

Koszty są podane w cenach netto, należy doliczyć podatek VAT

## Materiały:

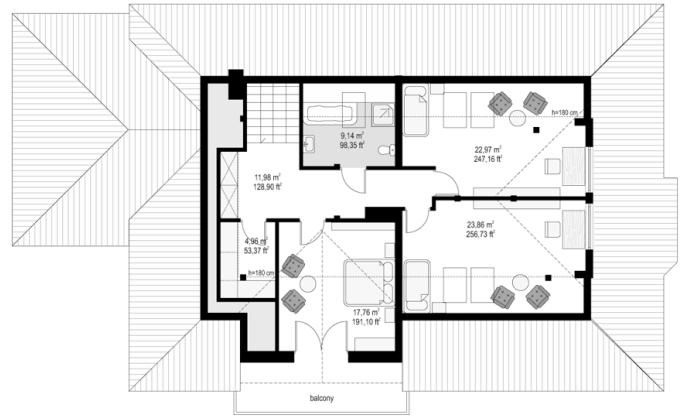
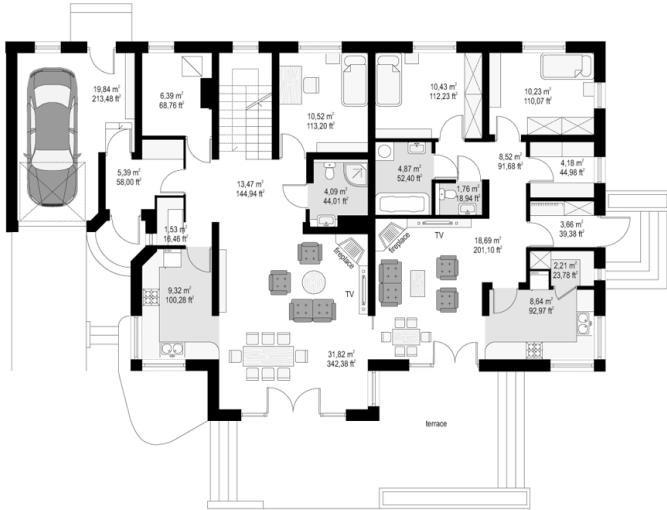
- Foundations - Concrete benches, walls of concrete blocks
- External walls - bilayer: porotherm + polystyrene
- Internal walls - porotherm
- Ceiling - Teriva
- Roof - tile
- Elevation - thin-layer plaster

**CENA PROJEKTU: 1070.00 \$**

	Energy-saving package	bezpł.
	Ventilation and fireplace package	90
	Central vacuum package	70
	The electronic version of the project	120
	Solar installation package	70
	Underfloor heating package	80
	Heat pump package	70
	Water jacket package	70
	Boiler for solid fuel package	80
	Air conditioning package	80
	Fencing projects	140
	Septic tanks sealed package	bezpł.

Family house plan is a proposition of villa for three generations family with a separate apartment for grandparents or a child with his/her family. Family house is an extensive body covered by not high hipped roof. The layout of the rooms and the entrance to the two parts of the house is designed to fit the house to the plot with an adverse position in relation to the world. This house perfectly suited to the plot where the garden from the entrance is planned. We also have this house plan in a mirror version.

## Rzuty:



## Elewacje:

