

## Dane techniczne:

Kubatura:	763 m <sup>3</sup>
Powierzchnia zabudowy:	160.62 m <sup>2</sup>
Powierzchnia całkowita:	263.15 m <sup>2</sup>
Powierzchnia netto:	259.1 m <sup>2</sup>
Powierzchnia użytkowa:	177.45 m <sup>2</sup>
Wymiary domu:	16.98 x 11.15 m
Minimalne wymiary działki:	23.98 x 19.12 m
Wysokość do kalenicy:	7,87 m / 25,81 ft
Powierzchnia dachu:	244.6 m <sup>2</sup>
Kąt nachylenia dachu:	38 degrees

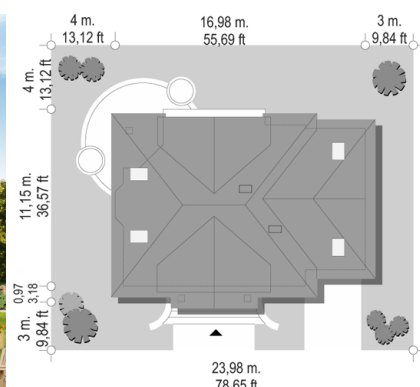
## Koszty realizacji:

Realizacja stanu surowego otwartego:	51 200
Realizacja stanu surowego zamkniętego:	76 000
Koszt robót wykończeniowych:	66 400
Realizacja domu pod klucz:	142 300

Koszty są podane w cenach netto, należy doliczyć podatek VAT

## Materiały:

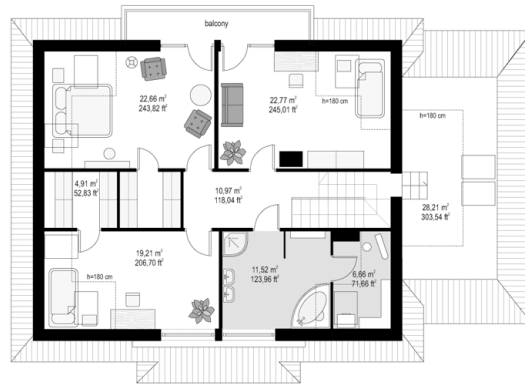
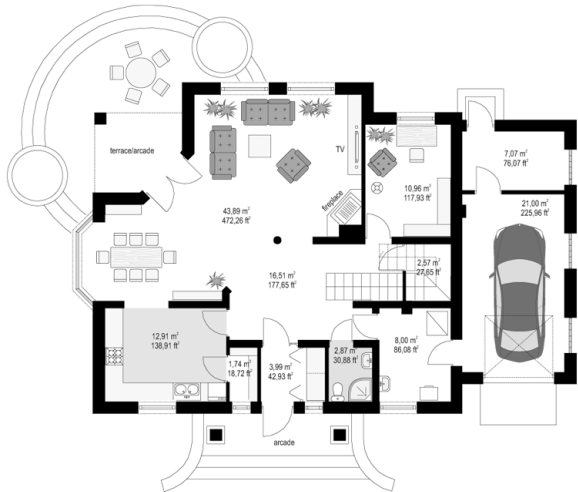
- Foundations - + benches poured concrete block
- External walls - bilayer: porotherm 25 + 15 wool (or polystyrene) + thin-layer plaster or aerated concrete + polystyrene
- Ceiling - reinforced concrete Teriva
- Elevation - thin-layer plaster
- Roof - metal roofing tile or ceramic tile

**CENA PROJEKTU: 1000.00 \$**

	Energy-saving package	bezpł.
	Ventilation and fireplace package	90
	Central vacuum package	70
	The electronic version of the project	120
	Solar installation package	70
	Underfloor heating package	80
	Heat pump package	70
	Water jacket package	70
	Boiler for solid fuel package	80
	Air conditioning package	80
	Fencing projects	140
	Septic tanks sealed package	bezpł.

Favorite house plan is a villa with a compact body, referring to the traditional architecture of the Polish mansion. It is designed for a family of 5 people. On the ground floor an extra room is designed - to work, guest room and a spacious living room with dining room open to a large arcade. In this house plan every room in the attic is equipped with a wardrobe or closet. The room above the garage can be used as a "hobby" room or storeroom - attic. In this house plan is possible to extend the garage. We also have the Favorite house plan in a mirror version.

## Rzuty:



## Elewacje:

