

### Dane techniczne:

Kubatura:	839 m <sup>3</sup>
Powierzchnia zabudowy:	182.75 m <sup>2</sup>
Powierzchnia całkowita:	295.52 m <sup>2</sup>
Powierzchnia netto:	248.44 m <sup>2</sup>
Powierzchnia użytkowa:	188.74 m <sup>2</sup>
Wymiary domu:	19.46 x 11.15 m
Minimalne wymiary działki:	26.47 x 19.12 m
Wysokość do kalenicy:	7,87 m / 25,81 ft
Powierzchnia dachu:	319.33 m <sup>2</sup>
Kąt nachylenia dachu:	34, 38 i 45 degrees

### Koszty realizacji:

Realizacja stanu surowego otwartego:	55 000
Realizacja stanu surowego zamkniętego:	84 100
Koszt robót wykończeniowych:	73 500
Realizacja domu pod klucz:	157 600

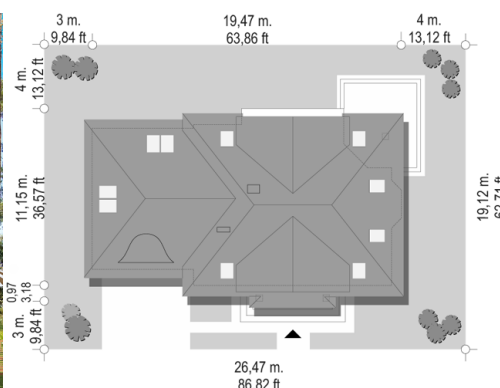
Koszty są podane w cenach netto, należy doliczyć podatek VAT

### Materiały:

- Foundations - Concrete benches, walls of concrete block
- External walls - bilayer walls with porotherm
- Ceiling - Teriva
- Roof - tile
- Elevation - thin-layer plaster



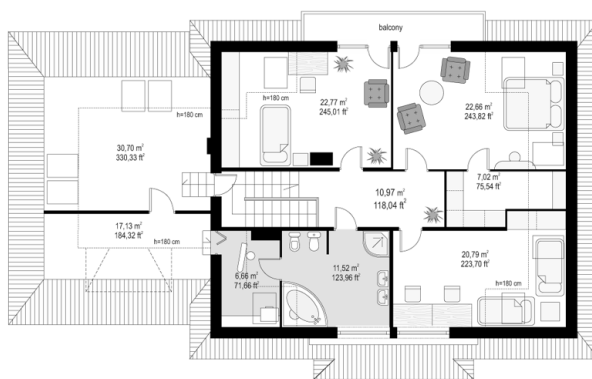
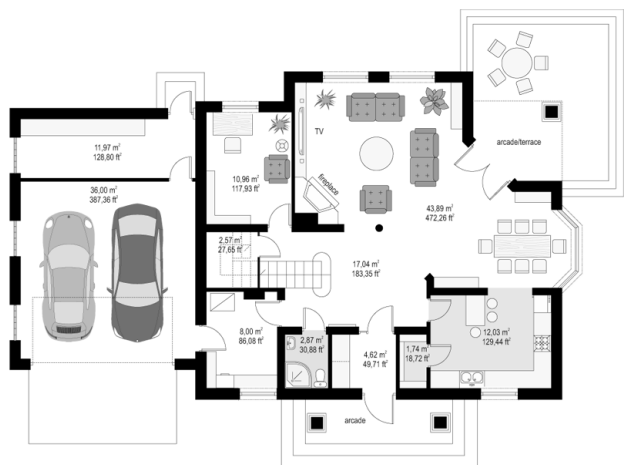
## CENA PROJEKTU: 1000.00 \$



	Energy-saving package	bezpł.
	Ventilation and fireplace package	90
	Central vacuum package	70
	The electronic version of the project	120
	Solar installation package	70
	Underfloor heating package	80
	Heat pump package	70
	Water jacket package	70
	Boiler for solid fuel package	80
	Air conditioning package	80
	Fencing projects	140
	Septic tanks sealed package	bezpł.

Favorite 2 house plan is the second version of the popular house plan Favorite. From basic version of the house plan differs enlarged, double garage. This house plan has been designed for a family of 4-5 people. On the ground floor besides a spacious living room with dining area and lobby an extra room and utility room was designed. On the attic of the house three nice bedrooms and a bathroom with laundry was planned. Thanks to enlarge the garage to two positions increased also the utility room behind the garage and attic which can be changed, e.g. in the center of home entertainment. We also have the Favorite 2 house plan in a mirror version.

## Rzuty:



## Elewacje:

