

Dane techniczne:

Kubatura:	729 m ³
Powierzchnia zabudowy:	151.84 m ²
Powierzchnia całkowita:	246.26 m ²
Powierzchnia netto:	203.92 m ²
Powierzchnia użytkowa:	166.85 m ²
Wymiary domu:	15.68 x 11.15 m
Minimalne wymiary działki:	19.68 x 19.12 m
Wysokość do kalenicy:	7,87 m / 25,81 ft
Powierzchnia dachu:	509 m ²
Kąt nachylenia dachu:	34, 38 i 45 degrees

Koszty realizacji:

Realizacja stanu surowego otwartego:	47 600
Realizacja stanu surowego zamkniętego:	73 000
Koszt robót wykończeniowych:	67 000
Realizacja domu pod klucz:	140 000

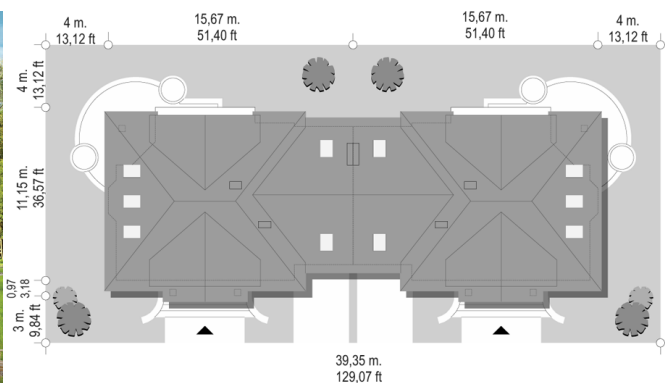
Koszty są podane w cenach netto, należy doliczyć podatek VAT













Materiały:

- Foundations - Concrete benches, walls of concrete blocks
- External walls - bilayer: porotherm + polystyrene
- Internal walls - porotherm
- Ceiling - Teriva
- Roof - tile
- Elevation - thin-layer plaster



CENA PROJEKTU: 1250.00 \$

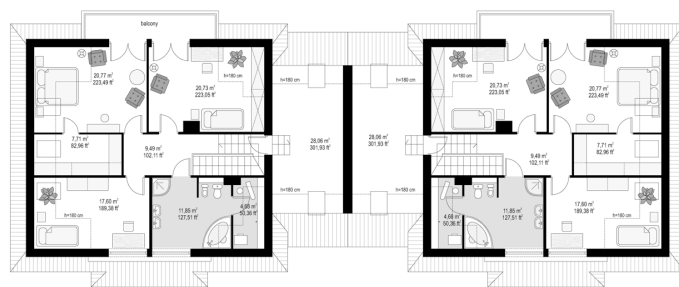
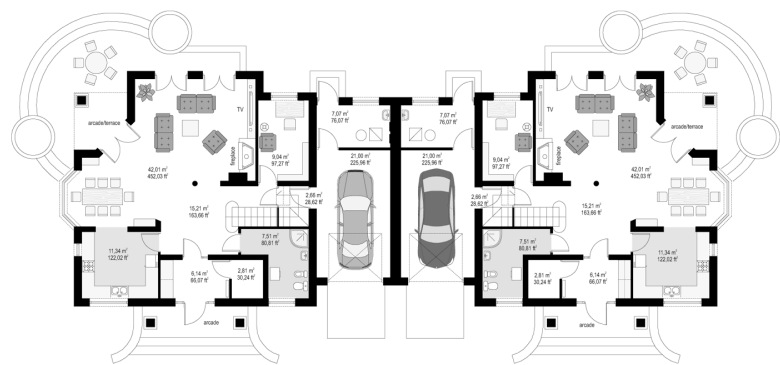


-  Energy-saving package bezpł.
-  Ventilation and fireplace package 90
-  Central vacuum package 70
-  The electronic version of the project 120
-  Solar installation package 70
-  Underfloor heating package 80
-  Heat pump package 70
-  Water jacket package 70
-  Boiler for solid fuel package 80
-  Air conditioning package 80
-  Fencing projects 140
-  Septic tanks sealed package bezpł.

Favorite 3 house plan is the third version of the popular house plan Favorite. This time in the form of a twin house for two families. The house can be situated on a plot with a width of 39.36 m. For the one half about 20 meter plot is needed. Each half have on the ground floor living room and dining room, extra room, and three bedrooms in the attic. In this house plan save up a lot of space for storage, dressing rooms and wardrobes. We also have the this house plan in a mirror version.

* **Technical data relate to half of semi-detached house** *

Rzuty:



Elewacje:

