

## Dane techniczne:

Kubatura:	956 m <sup>3</sup>
Powierzchnia zabudowy:	189.32 m <sup>2</sup>
Powierzchnia całkowita:	306.07 m <sup>2</sup>
Powierzchnia netto:	183.46 m <sup>2</sup>
Powierzchnia użytkowa:	179.45 m <sup>2</sup>
Wymiary domu:	18.74 x 13.39 m
Minimalne wymiary działki:	27.52 x 22.32 m
Wysokość do kalenicy:	8,42 m / 27,62 ft
Powierzchnia dachu:	308.68 m <sup>2</sup>
Kąt nachylenia dachu:	25 degrees

## Koszty realizacji:

Realizacja stanu surowego otwartego:	69 360
Realizacja stanu surowego zamkniętego:	102 030
Koszt robót wykończeniowych:	81 940
Realizacja domu pod klucz:	184 440

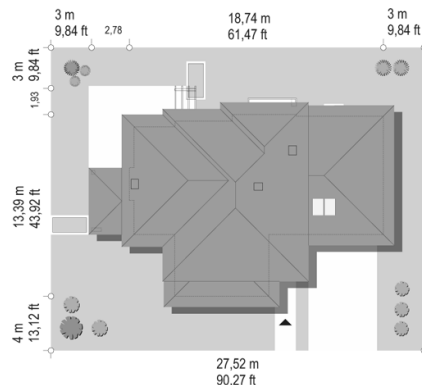
Koszty są podane w cenach netto, należy doliczyć podatek VAT

## Materiały:

- Foundations - concrete
- External walls - brick walls -porotherm + polystyrene
- Ceiling - Teriva
- Elevation - thin-layer plaster on polystyrene
- Roof - sheet metal seam (alternatively tile)



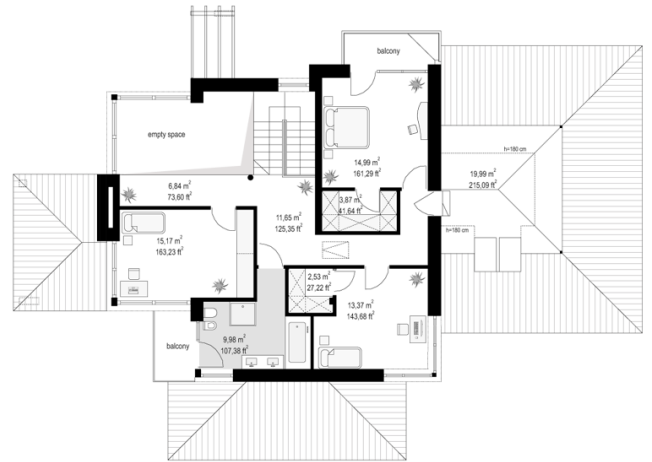
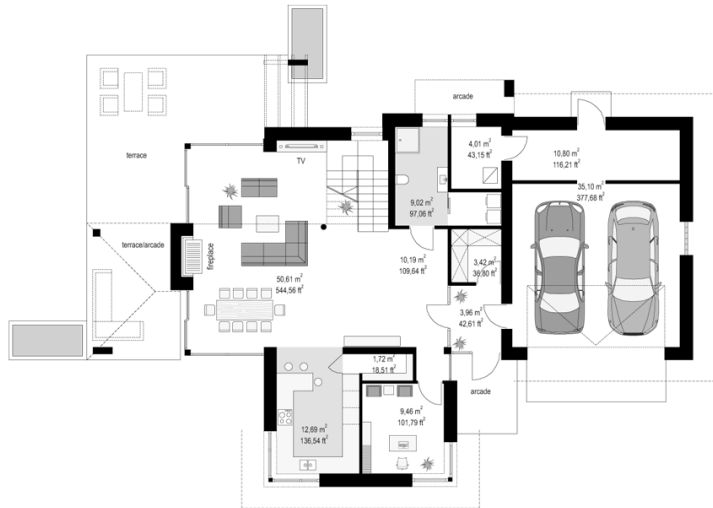
## CENA PROJEKTU: 1560.00 \$



	Energy-saving package	bezpł.
	Ventilation and fireplace package	90
	Central vacuum package	70
	The electronic version of the project	120
	Solar installation package	70
	Underfloor heating package	80
	Heat pump package	70
	Water jacket package	70
	Boiler for solid fuel package	80
	Air conditioning package	80
	Fencing projects	140
	Septic tanks sealed package	bezpł.

House with view 6 is another version of the popular series House with view. This is a variant with a completely different interior design. Namely, the living area, living room and terraces are located in the back of the house. Therefore, the house is perfect for a classic plot with a garden behind the house and entrance and entry to the plot from the sunniest part of the plot. House with a view 6 is a unique project. It combines all the interesting elements of its predecessors, but it also has additional attractions, giving together a successful proposal of a beautiful modern villa. As in the other houses with a view, the storey core of the house is enclosed here with smaller blocks. The entire building is covered with multi-pitched gentle roofs with wide eaves. The leitmotifs are corner large windows - glazed living room, dining room, kitchen. A glass, two-storey corner of the living room with emptiness, adorns the rear facade - garden this time. The house is varied with stone and wooden wall claddings, as well as with roofs, balconies and pergolas above the terrace. The interior is very interesting. The central part of the ground floor is a beautiful living room, with a void above its fragment, and above the stairs that are the decoration of the interior. From the entresol upstairs, we can admire the living room and the garden view. We get to the house with a glass corner entrance to the vestibule, and from there to the hall and the living room. At the entrance we have an additional room - a study room, and on the opposite side of the hall there is a bathroom with a laundry room. From the vestibule, we can go to the garage and utility rooms with a boiler room. A nice kitchen with an extra pantry is available from the lobby and dining room. Terraces around the living space are arranged in the letter L - part of the terrace is roofed. The first floor has three bedrooms and a large central bathroom. Parents' bedroom and one children's bedroom has a dressing room. Second children's bedroom has built-in wardrobe. A part of the floor area is occupied by an entresol and opening on the ground floor. Above the garage there is an attic available from the lobby. House with view 6 is slightly smaller than its predecessors, but thanks to it cheaper to implement. At the same time, the house does not lose its attractiveness and the spaciousness of its interior. The project is an excellent offer for investors dreaming about a representative, elegant, storey house, with modern architecture, and a functional and original interior. There is also a version of the house in the mirror image (garage on the right), basic version (House with view), version reduced to 221m<sup>2</sup> (House with view 2), and the version reduced by 30% and cheaper to implement (House with view 3)

## Rzuty:



## Elewacje:

