

Dane techniczne:

Kubatura:	618 m ³
Powierzchnia zabudowy:	132.54 m ²
Powierzchnia całkowita:	204.1 m ²
Powierzchnia netto:	131.98 m ²
Powierzchnia użytkowa:	127.37 m ²
Wymiary domu:	14.14 x 10.29 m
Minimalne wymiary działki:	21.14 x 19.59 m
Wysokość do kalenicy:	8,20 m / 26,90 ft
Powierzchnia dachu:	129.5 m ²
Kąt nachylenia dachu:	40 degrees

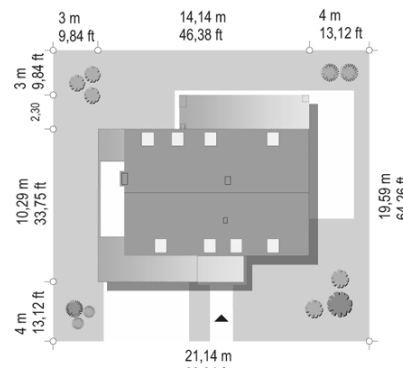
Koszty realizacji:

Realizacja stanu surowego otwartego:	36 860
Realizacja stanu surowego zamkniętego:	61 190
Koszt robót wykończeniowych:	71 880
Realizacja domu pod klucz:	133 070

Koszty są podane w cenach netto, należy doliczyć podatek VAT

Materiały:

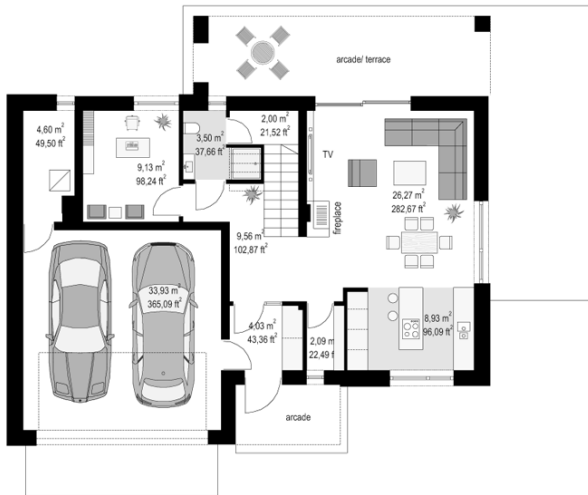
- Foundations - concrete bench and foundation walls with concrete blocks
- External walls - brick walls -porotherm 25 blocks + polystyrene + thin-layer plaster
- Ceiling - Teriva
- Elevation - thin-layer plaster on polystyrene
- Roof - tile or metal roofing tile

**CENA PROJEKTU: 1110.00 \$**

	Energy-saving package	bezpł.
	Ventilation and fireplace package	90
	Central vacuum package	70
	The electronic version of the project	120
	Solar installation package	70
	Underfloor heating package	80
	Heat pump package	70
	Water jacket package	70
	Boiler for solid fuel package	80
	Air conditioning package	80
	Fencing projects	140
	Septic tanks sealed package	bezpł.

House plan Fokstrot is another version of the house plan from the collection of "dancing" houses: Party, Party 2, Biba, Rumba, Salsa, Samba, Tango. This is another version of the popular Party house plan, but in a more modern perspective - a "barn" type house, without eaves, with one-storeyed extensions, with flat roofs surrounding the main body. The house is an offer for customers who like modern architecture. The main body of the house is a cuboid covered with a gable roof. The front of the house is diversified by a protruding garage and an entrance roof. From the garden side, the arcade - roofing of the terrace. The solid was divided by horizontal stripes. The lower part of the ground floor was filled with large windows to the floor and gray slabs. In the attic gable walls, sets of balcony windows have been designed connected with contrasting central pillars. The rest of the facade of the house is white. The roof was covered with a flat graphite roof tile. In the roof on both sides there are rows of roof windows. The architecture of the house is modern, simple, clean. The building perfectly fits into any surroundings. Interior: on the ground floor, we designed a single-space interior of the living room, kitchen and lobby. A kitchen with an island, a wall in full building, with beautiful glazing to the floor and an adjacent pantry will be a great place for short meetings of the household. The living room with a fireplace and TV wall opens with wide glazed windows to the surrounding garden and partly covered terrace. On the ground floor, we also have an additional room, bathroom with shower and storage compartment, two-station garage and boiler room. In the attic, three bedrooms have been designed: parents' apartment with its own bathroom and dressing room, and a terrace above the garage, and two children's bedrooms, with built-in wardrobes and a separate bathroom. In addition, a laundry room is also provided in the attic. Knee walls in the attic are quite high, so slants should not be a big problem. The house has a very simple construction. Its shape is a rectangle covered with a gable roof. The house will be inexpensive to build, and thanks to energy-saving solutions and a "clean" solid - it will also be cheap in later operation. The offer is just for the modern, dynamic family who likes modern architecture.

Rzuty:



Elewacje:

