

## Dane techniczne:

Kubatura:	898.8 m <sup>3</sup>
Powierzchnia zabudowy:	182.2 m <sup>2</sup>
Powierzchnia całkowita:	310.4 m <sup>2</sup>
Powierzchnia netto:	255.5 m <sup>2</sup>
Powierzchnia użytkowa:	173.56 m <sup>2</sup>
Wymiary domu:	19.15 x 11.5 m
Minimalne wymiary działki:	27.15 x 19.15 m
Wysokość do kalenicy:	7,87 m / 25,81 ft
Powierzchnia dachu:	290.8 m <sup>2</sup>
Kąt nachylenia dachu:	34, 38 i 45 degrees

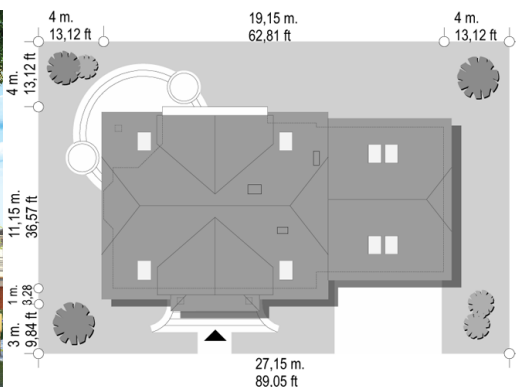
## Koszty realizacji:

Realizacja stanu surowego otwartego:	63 000
Realizacja stanu surowego zamkniętego:	91 200
Koszt robót wykończeniowych:	76 600
Realizacja domu pod klucz:	167 700

Koszty są podane w cenach netto, należy doliczyć podatek VAT

## Materiały:

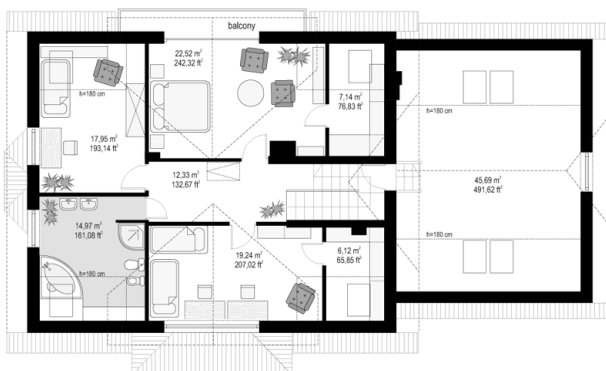
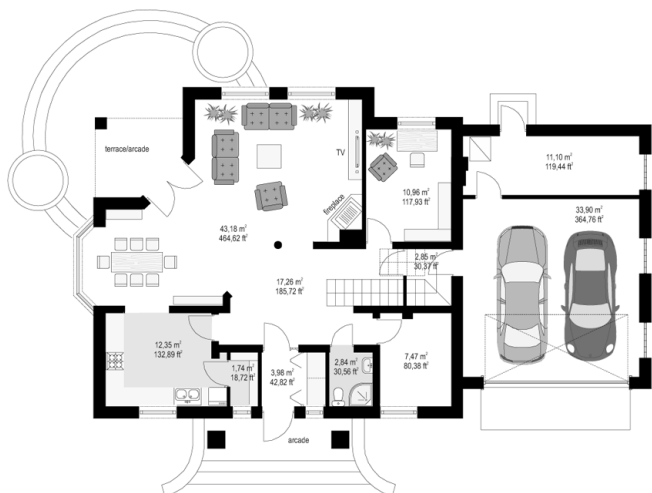
- Foundations - concrete benches and foundation walls with concrete blocks
- Exterior walls - brick walls - airbrick porotherm 25 + polystyrene + thin-layer plaster
- Ceiling - TERIVA
- Elevation - thin-layer plaster on polystyrene
- Roof - tile

**CENA PROJEKTU: 1000.00 \$**

	Energy-saving package	bezpł.
	Ventilation and fireplace package	90
	Central vacuum package	70
	The electronic version of the project	120
	Solar installation package	70
	Underfloor heating package	80
	Heat pump package	70
	Water jacket package	70
	Boiler for solid fuel package	80
	Air conditioning package	80
	Fencing projects	140
	Septic tanks sealed package	bezpł.

Focus 2 house plan is the next variant version of the Focus house plan - with double garage and an extended attic over the garage part. The building has been planned for a family of four-six people. Storey house with usable attic, covered by symmetrical gable roofs. Outside architecture of the house refers to the tradition of Polish manor house - in the modern sense. Compact form of house with an added garage part is decorated with a large front and rear dormers and balconies and with roofed entrance on the massive columns. Corner arcade from the garden is a diversity of the rectangular floor plan. The interior of the Focus 2 house plan creates one space on the ground floor living area, which consists of: living room, a dining room, a large hall with exposed stairs, and partly open kitchen. On the ground floor there are two additional rooms and a garage for two cars and a boiler room. On the top floor you will find three comfortable bedrooms with dressing rooms, spacious bathroom, and an attic, which can also be adapted for utility purposes. There is also a mirror version of the Focus 2 house plan.

## Rzuty:



## Elewacje:

