

Dane techniczne:

Kubatura:	702 m ³
Powierzchnia zabudowy:	188.43 m ²
Powierzchnia całkowita:	188.43 m ²
Powierzchnia netto:	124.84 m ²
Powierzchnia użytkowa:	118.23 m ²
Wymiary domu:	15.15 x 17.49 m
Minimalne wymiary działki:	22.15 x 24.49 m
Wysokość do kalenicy:	5,98 m / 19,61 ft
Powierzchnia dachu:	289.1 m ²
Kąt nachylenia dachu:	30 degrees

Koszty realizacji:

Realizacja stanu surowego otwartego:	48 330
Realizacja stanu surowego zamkniętego:	71 330
Koszt robót wykończeniowych:	57 180
Realizacja domu pod klucz:	128 510

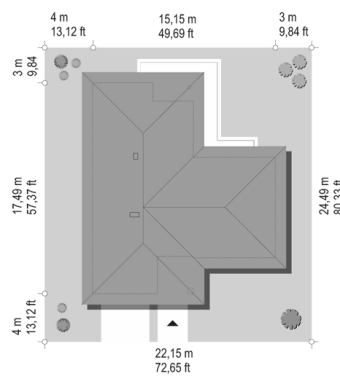
Koszty są podane w cenach netto, należy doliczyć podatek VAT

Materiały:

- Foundations - concrete bench and foundation walls with concrete blocks
- External walls - brick walls -porotherm 25 blocks + polystyrene + thin-layer plaster
- Ceiling - monolithic
- Elevation - thin-layer plaster on polystyrene
- Roof - tile or metal roofing tile



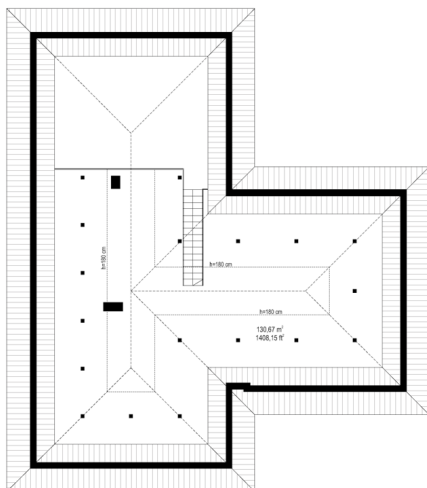
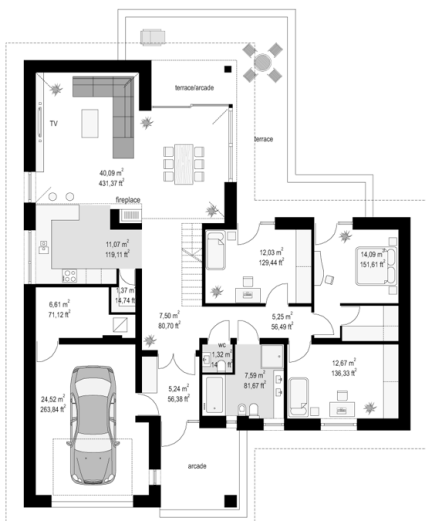
CENA PROJEKTU: 1110.00 \$



	Energy-saving package	bezpł.
	Ventilation and fireplace package	90
	Central vacuum package	70
	The electronic version of the project	120
	Solar installation package	70
	Underfloor heating package	80
	Heat pump package	70
	Water jacket package	70
	Boiler for solid fuel package	80
	Air conditioning package	80
	Fencing projects	140
	Septic tanks sealed package	bezpł.

One-storeyed house plan is a single-family house for a family of four. We have already designed many one-storey houses - this project is our current answer to the question: what should a reasonable, medium-sized one-story house for a Polish family look like? The house's solid was built on the plan of the letter T. The house is covered with a multi-slope gentle roof. The modern architecture of the house has been underlined with appropriate finishing materials and colors. The house is modern but also subdued. Thanks to this, the architecture of the house will be long-lasting and will not grow old easily. The gray frames of windows and doors, as well as the wooden fragments of the walls, contrast with the white of the walls. The entire body is topped with a graphite roof made of flat roof tiles. The front of the house is decorated with a wide glass entrance. The garden elevation is diversified by the corner glazing of the living room combined with the arcade above the part of the terrace. The interior of the house has three zones, connected by the entrance part: the vestibule and the hall. On the left from the vestibule we go to the economic zone of the house, with a nice garage, boiler room and attic above the garage. In front of the entrance hall, through the wide glass doors, we go to the lobby and further to the living area, consisting of a living room, dining room and kitchen combined into one shared interior, separated by a fireplace. Above the living room there is a spatial opening up to the roof, and an attic - a mezzanine with stairs, overlooking the living room. On the mezzanine you can arrange a recreation room, or a study-library. The third part of the house is might part. It consists of a bedroom of parents with a wardrobe, two children's bedrooms with built-in wardrobes, a bathroom and a separate toilet. Above the bedrooms there is also an attic, accessible from the mezzanine above the living room. The house is small, but it has all the features needed for a comfortable family life. The shape of the house is quite simple. The building is one-storeyed - uncomplicated and inexpensive to build and use. If you have a one-story house planned you should definitely considering the choice of this house plan.

Rzuty:



Elewacje:



MG Projekt Pracownia Architektoniczna s.c. ul. Uczniowska 14 03-112 Warszawa
 tel.: 22 676 66 83, 22 676 66 88, fax: 22 676 66 82, mob.: 600 392 884,
 tylko przedstawiciele 606 200 136, www.mgprojekt.com.pl,
mgprojekt@mgprojekt.com.pl

MG Projekt