

Dane techniczne:

Kubatura:	578 m ³
Powierzchnia zabudowy:	124.37 m ²
Powierzchnia całkowita:	190.44 m ²
Powierzchnia netto:	132.49 m ²
Powierzchnia użytkowa:	125.67 m ²
Wymiary domu:	14.41 x 9.56 m
Minimalne wymiary działki:	22.14 x 17.56 m
Wysokość do kalenicy:	8,44 m / 27,68 ft
Powierzchnia dachu:	161.56 m ²
Kąt nachylenia dachu:	40 degrees

Koszty realizacji:

Realizacja stanu surowego otwartego:	36 800
Realizacja stanu surowego zamkniętego:	59 050
Koszt robót wykończeniowych:	64 970
Realizacja domu pod klucz:	124 010

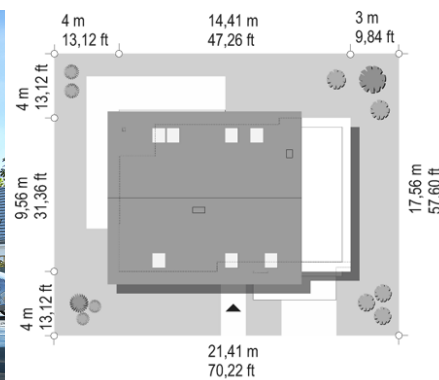
Koszty są podane w cenach netto, należy doliczyć podatek VAT

Materiały:

- Foundations - concrete bench and foundation walls with concrete blocks
- External walls - brick walls - porotherm 25 blocks + polystyrene + thin-layer plaster
- Ceiling - teriva
- Elevation - thin-layer plaster on polystyrene
- Roof - ceramic tile



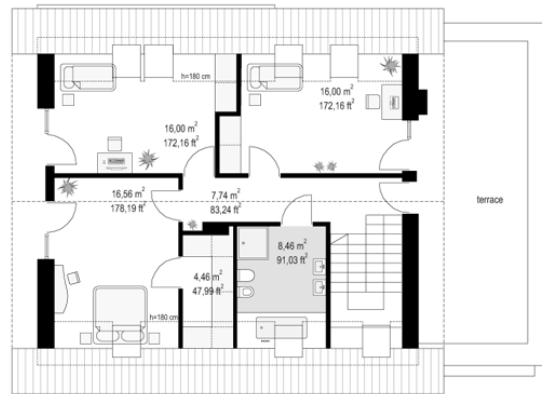
CENA PROJEKTU: 1040.00 \$



	Energy-saving package	bezpł.
	Ventilation and fireplace package	90
	Central vacuum package	70
	The electronic version of the project	120
	Solar installation package	70
	Underfloor heating package	80
	Heat pump package	70
	Water jacket package	70
	Boiler for solid fuel package	80
	Air conditioning package	80
	Fencing projects	140
	Septic tanks sealed package	bezpł.

Samba house plan is one of the projects from the popular Party (Party, Party 2, Fokstrot, Biba, Salsa, Tango). Samba is a one-family single-family house with an attic designed for a family of four and five people. The cottage is inexpensive to build, has a simple structure and very attractive architecture. The rectangular shape covered with a gable roof adorns and enriches: an entrance arcade with an indentation in a block and a roof, a single-storey garage, and a cut-out corner on the garden side - an arcade and an extended terrace roof. The indentation in the block can be the same as in the design, or it can be easily built and enlarged the same living room. Appropriately selected finishing materials and colours give "Samba" a modern look. We enter the house through a representative door with a shutter. The door was designed in a niche, with a platform covered with a protruding roof. The roof ends with a clever wood storage for the fireplace next to the garage door. From the entrance hall we go straight in front of wide glass doors to the lobby and the living room, or to the sides: to the locker room and garage, or to the other side through the pantry to the kitchen. In this way, proper communication is ensured by entering the house - on foot or by car, with shopping. In the hall we have a slightly separated from the rest of the interior stairs, the entrance to an additional room, and a wide passage to the living space, with living room, dining room and kitchen. The central place of the interior is a wall with a fireplace, around which the rooms were designed. In the living room we also have a TV wall, a place for leisure furniture, a dining room with access to the terrace and garden, and a nice kitchen separated by a peninsula, connected with a pantry. Behind the garage, there is a boiler room. In the attic, three bedrooms have been designed, and a nice bathroom with a bath and shower. Parents' bedroom has its own dressing room - children's bedrooms have built-in wardrobes. Samba, despite its small size, is a very comfortable home for a full family. Attractive design, functional interior, energy-saving solutions, and an inexpensive cost of construction and subsequent operation should convince many investors to this project.

Rzuty:



Elewacje: