

## Dane techniczne:

Kubatura:	589 m <sup>3</sup>
Powierzchnia zabudowy:	126.39 m <sup>2</sup>
Powierzchnia całkowita:	199.47 m <sup>2</sup>
Powierzchnia netto:	135.22 m <sup>2</sup>
Powierzchnia użytkowa:	130.17 m <sup>2</sup>
Wymiary domu:	13.7 x 11.9 m
Minimalne wymiary działki:	21.4 x 19.9 m
Wysokość do kalenicy:	8,15 m / 26,73 ft
Powierzchnia dachu:	194.45 m <sup>2</sup>
Kąt nachylenia dachu:	40 degrees

## Koszty realizacji:

Realizacja stanu surowego otwartego:	40 430
Realizacja stanu surowego zamkniętego:	62 110
Koszt robót wykończeniowych:	63 640
Realizacja domu pod klucz:	125 750

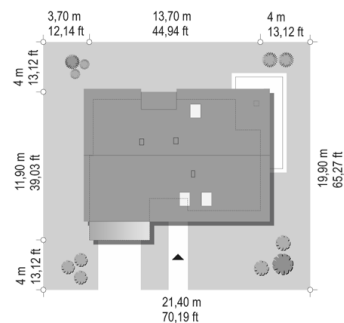
Koszty są podane w cenach netto, należy doliczyć podatek VAT

## Materiały:

- Foundations - concrete bench and foundation walls with concrete blocks
- External walls - brick walls - porotherm 25 blocks + polystyrene + thin-layer plaster
- Ceiling - teriva
- Elevation - thin-layer plaster on polystyrene
- Roof - ceramic tile



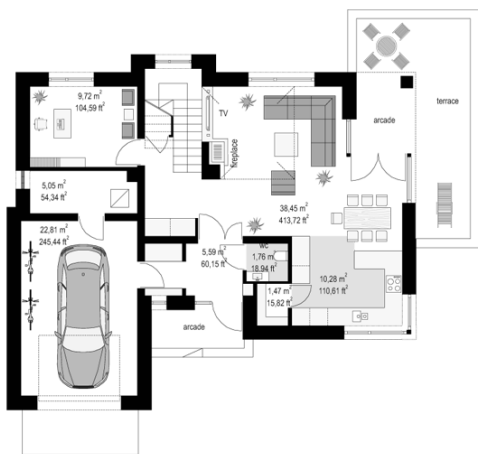
## CENA PROJEKTU: 1040.00 \$



	Energy-saving package	bezpł.
	Ventilation and fireplace package	90
	Central vacuum package	70
	The electronic version of the project	120
	Solar installation package	70
	Underfloor heating package	80
	Heat pump package	70
	Water jacket package	70
	Boiler for solid fuel package	80
	Air conditioning package	80
	Fencing projects	140
	Septic tanks sealed package	bezpł.

Tango house plan is one of the projects from the collection of "dancing" houses, which is derived from the popular project Party (Party, Party 2, Fokstrot, Rumba, Biba, Samba, Salsa). Tango is a single-family house, one-storey with a usable attic, designed for a family of 4-6 people. The rectangular shape of the building is covered with a gabled symmetrical roof. The solid is varied: a garage part protruding from the outline, a glass entrance arcade recess, a cut out corner of the roofed part of the terrace from the garden side, or a cubic dormer on the stairwell platform. The house has beautiful glazing that opens the interior to the garden and adds an attractive, representative look to the front façade. Finishing the façade with stone and wooden inserts adds a touch of modernity and proper proportions. The architecture of the house, though simple, draws attention and draws attention. The interior of house is also interesting. Spatial opening - the void above the living room and above the stairs visually enlarges the daily part and makes the interior of the house more attractive. We enter the house with a wide representative door with a window for a comfortable entrance hall with a cloakroom, and then wide double glass doors to the lobby and the living room. We decided to design the entrance to the toilet from the vestibule - a very practical solution isolating the room from the living room and guests. From the locker room we go to a comfortable garage and boiler room. The living room is a living room, with a central fireplace, beautiful stairs connected with emptiness above the living room, dining room and kitchen with a pantry. From the lobby by the stairs, we get to an additional room and a storage compartment under the stairs. In the attic there are three bedrooms: a separate parents' suite, with its own bathroom and dressing room, and children's bedrooms with built-in wardrobes and a separate bathroom. The bedrooms are separated by a mezzanine, with a view down to the living room and stairs. The house is a combination of a simple traditional form with interesting architectural solutions, adding the exterior and interior of attractiveness. The simple construction and compact body make the house inexpensive to build and in later use. Tango is an excellent offer for investors who want to stand out from many identical houses.

## Rzuty:



## Elewacje: