

## Dane techniczne:

Kubatura:	1311 m <sup>3</sup>
Powierzchnia zabudowy:	313.98 m <sup>2</sup>
Powierzchnia całkowita:	313.98 m <sup>2</sup>
Powierzchnia netto:	248 m <sup>2</sup>
Powierzchnia użytkowa:	201 m <sup>2</sup>
Wymiary domu:	20.51 x 24.47 m
Minimalne wymiary działki:	27.91 x 32.47 m
Wysokość do kalenicy:	6,33 m / 20,76 ft
Powierzchnia dachu:	454.5 m <sup>2</sup>
Kąt nachylenia dachu:	30 degrees

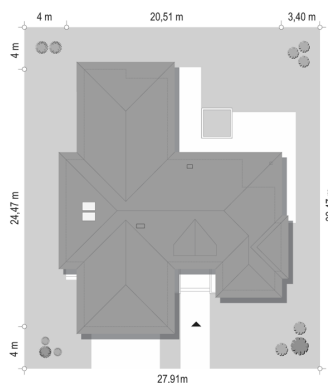
## Koszty realizacji:

Realizacja stanu surowego otwartego:	84 410
Realizacja stanu surowego zamkniętego:	114 160
Koszt robót wykończeniowych:	86 980
Realizacja domu pod klucz:	201 130

Koszty są podane w cenach netto, należy doliczyć podatek VAT

## Materiały:

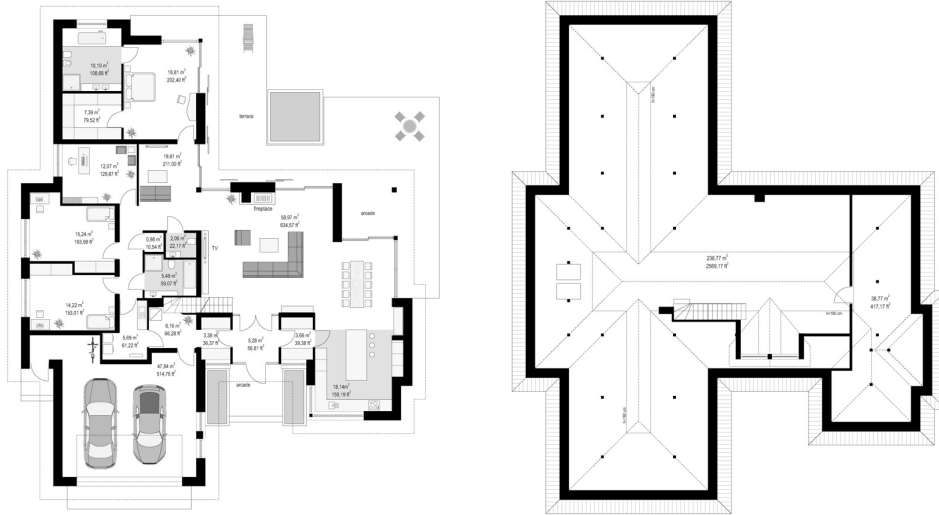
- Foundations - concrete bench and foundation walls with concrete blocks
- External walls - brick walls -porotherm 25 blocks + polystyrene + thin-layer plaster
- Ceiling - Teriva
- Elevation - thin-layer plaster on polystyrene
- Roof - tile or metal roofing tile

**CENA PROJEKTU: 1550.00 \$**

	Energy-saving package	bezpł.
	Ventilation and fireplace package	90
	Central vacuum package	70
	The electronic version of the project	120
	Solar installation package	70
	Underfloor heating package	80
	Heat pump package	70
	Water jacket package	70
	Boiler for solid fuel package	80
	Air conditioning package	80
	Fencing projects	140
	Septic tanks sealed package	bezpł.

Unique house plan is a comfortable one-story single-family house from the "Unique" house plan series. This is a luxurious suburban villa, designed entirely on one floor, which gives the residents the convenience of living on the ground floor without running up the stairs. Great advantage is also an invaluable closeness to the surrounding garden. The house was designed on the plan of the letter "T", with a garage in front of the building, and a part of the bedroom entering to the garden. The building is covered with a multi-slope gentle roof that covers the attic, which can be used as an additional attic. Modern architecture of the building, with large glazing, corner windows, sliding blinds, combines the traditional form of the house with modern architectural detail. As a result, we have a wide, luxurious bungalow. We enter to the house by a wide, representative entrance through the front patio, with beautiful flowerbeds with greenery on the sides of the entrance platform. From the spacious vestibule, we go straight to the living space, to the large living room, from which, through large glazing, there is a view for terrace and the garden. From the vestibule, we can also go sideways to the locker room and further to the utility rooms and garage, and through the pantry to the kitchen. The living space is a living room, dining room, and a beautiful kitchen with an island. From the living room and dining room, we go out to the surrounding terraces. In the night part we have: parents' apartment with bathroom, wardrobe and beautiful windows to the terrace, additional room - study room, two children's bedrooms with bathroom, additional guest toilet, and mini-living room - living room, or TV corner. From the night part, we have also an access to laundry room, near the bedroom. The house has a very functional interior, facilitating everyday life. Open spaces, and glazing connect the interior with the garden, and give an invaluable sense of luxury and high quality of life. And all this was achieved on a small surface and in a rather simple building construction. Unique is a great example how a very good effect can sometimes be achieved with a reasonable and not terribly expensive way. The house is, of course, energy-saving, designed with modern materials.

## Rzuty:



## Elewacje:

