

## Dane techniczne:

Kubatura:	586 m <sup>3</sup>
Powierzchnia zabudowy:	139.04 m <sup>2</sup>
Powierzchnia całkowita:	213.66 m <sup>2</sup>
Powierzchnia netto:	154.16 m <sup>2</sup>
Powierzchnia użytkowa:	151.42 m <sup>2</sup>
Wymiary domu:	16.8 x 8.34 m
Minimalne wymiary działki:	23.8 x 16.39 m
Wysokość do kalenicy:	7,31 m / 23,98 ft
Powierzchnia dachu:	225.2 m <sup>2</sup>
Kąt nachylenia dachu:	40 degrees

## Koszty realizacji:

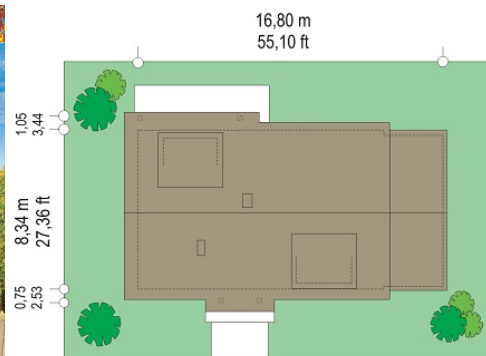
Realizacja stanu surowego otwartego:	38 800
Realizacja stanu surowego zamkniętego:	56 000
Koszt robót wykończeniowych:	58 300
Realizacja domu pod klucz:	114 200

Koszty są podane w cenach netto, należy doliczyć podatek VAT

## Materiały:

## Materials:

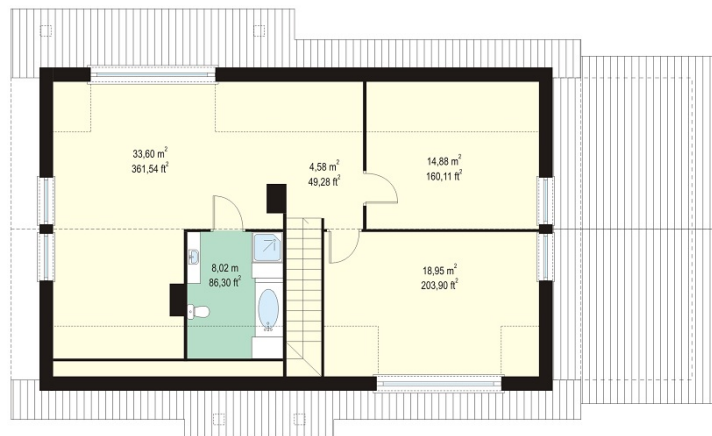
- Foundations - concrete benches and walls with concrete blocks
- Exterior walls - double layer of aerated concrete + wool
- Internal walls - aerated concrete
- Ceiling - monolithic reinforced concrete panels
- Elevation - thin-layer plaster
- Roof - tile

**CENA PROJEKTU: 900.00 \$**

	Energy-saving package	bezpł.
	Ventilation and fireplace package	90
	Central vacuum package	70
	The electronic version of the project	120
	Solar installation package	70
	Underfloor heating package	80
	Heat pump package	70
	Water jacket package	70
	Boiler for solid fuel package	80
	Air conditioning package	80
	Fencing projects	140
	Septic tanks sealed package	bezpł.

Epigram 2 house plan is a single family building for a family of 4-7 people, with the possibility of development and changing housing needs. Thanks to the extra room in your attic and the proximity of the stairs from the entrance house can be successfully divided up into two independent apartments. Simplicity of design Epigram 2 house and easy to make roof is indisputable advantages of the project. On the ground floor except the living room connected with a kitchen and hall there are also three bedrooms. At the attic there are additionally three nice rooms. The house can inhabit by a large family or two families. You can also living on the ground floor take advantage of an attic as a undivided studio for any function - such as recreation or work-related. For the residential part of the house a garage with utility room was added. There is also a mirror version of Epigram 2 house plan.

## Rzuty:



## Elewacje:

